

請記錄下列產品資料

• 型號

• 機身編號

• 經銷商名稱

• 購買日期

本產品不斷改進中，如功能有所更改，恕不另行通知，如有疑問，請與客戶服務中心聯絡，不便之處，敬請原諒。

說明書內容以英文版本為準

ToolBox Customer Service Centre 客戶服務中心:

4/F, DCH Building, 20 Kai Cheung Road, Kowloon Bay, Hong Kong
香港九龍灣啓祥道20號大昌行集團大廈4樓

Customer Service Hotline 客戶服務熱線: (852) 8210 8210

Service E-mail 電郵地址: 8210 service@gilman-group.com

Please register now at 請即上網登記: www.toolbox.hk

Website 網址: www.gilman-group.com



太平家庭電器

Proudly Serviced by:



gemini
ITALY

Multi-Temperature Zone Instant Hot Water Dispenser

多功能溫控即熱式飲水機

Model No. 型號: GWD210B

Before using this product,
please read this instruction manual.
在使用本產品前，請仔細閱讀本說明書並保存好。

SAFETY INTRUCTIONS

1. Please read these instructions carefully and retain them for reference.
2. This appliance is not intended for use by persons (including children under 8 years old) with reduced physical, sensory or mental capabilities, or lack of experience and knowledge, unless they have been given supervision or instruction concerning use of the appliance by a person responsible for their safety. Children should be supervised to ensure that they do not play with the appliance.
3. Have any repairs carried out solely by a qualified electrician. Never try to repair the appliance yourself.
4. Use this appliance solely in accordance with these instructions.
5. Never use the appliance outdoors.
6. Never use the appliance in a humid room.
7. Do not place this product in the work of the platform near the window, prevent any accidents and short circuit caused by outdoor weather. Do not place flammable goods beside this product. No foam, cardboard and other sundries should be laid at the bottom of water dispenser, so as to prevent water accumulation and cause leakage. This water dispenser is not suitable for outdoor installation or use where there may be water splashing.
8. Place the appliance on a flat, stable surface.
9. Never allow the power cord to hang over the edge of the draining board, worktop or table.
10. Do not place any objects covering the water dispenser.
11. Make sure that your hands are dry before touching the appliance, power cord or plug.
12. Always remove the plug from the wall socket after use, and before cleaning the appliance.
13. Do not pick up the appliance if it falls into water. Remove the plug from the wall socket immediately and do not use the appliance any more.

14. The power socket must be reliably grounded, and the rated current of the socket should be greater than 10A. In use, if you find that the body feels numb, please turn off the power immediately and ask a professional electrician to check whether the power socket is grounded.
15. Do not touch the water outlet of this product to prevent scalding.
16. Before using this product, please check that the bearing power of the socket is large enough to prevent overload of the line. Please check whether the voltage and power used are consistent with the product identification.
17. This water dispenser only use distilled, mineral water or purified water, and cannot heat other liquids to avoid damage to the electric water machine.
18. The minimum water injection volume of the water tank is 0.2 liter, and the maximum water volume is 1.1 liter .
19. This appliance may not be used through an external timer or by means of a remote control.
20. Please do not pull the power cord when moving the product. Please do not wrap the power cord around the water heater when using it.
21. If the supply cord is damaged, it must be replaced by the manufacturer, its service agent or similarly qualified persons in order to avoid a hazard.



**This water dispenser is for
HOUSEHOLD USE ONLY**

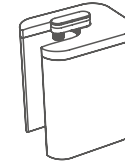
CAUTION WHEN USING INSTANT HOT WATER DISPENSER

- This instant hot water dispenser only can use distilled, mineral water or purified water, and cannot use tap water or other liquids without filtration and purification.
- When making 80 °C or 100 °C high-temperature water, a small part of high-temperature steam will stay at the outlet nozzle when the water preparation is finished and a small amount of high-temperature water will drop down. Please take away the water cup after 3 seconds to prevent scalding.
- In order to better use the water bottle cap, if you find that there is water in the water bottle cap, please open the decompression plug to drain the stored water from the decompression port.
- Do not add water higher than 40 °C, which will cause the water dispenser to stop working.
- This instant hot water dispenser has its own memory function. After double-click to unlock, click the function key to display the water temperature used last time. There is no need to re-select the water temperature again.
- The program of the water dispenser is set at hot water(i.e.100°C), and the temperature will lose after passing through the hose, water gas separation device, outlet nozzle air and water cup. the water produced is boiling water.

PRODUCT OVERVIEW



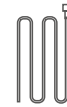
Instant hot water dispenser
X1



Water tank
X1



Power cable
X1



Water inlet hose
X1



Storage bag
X1

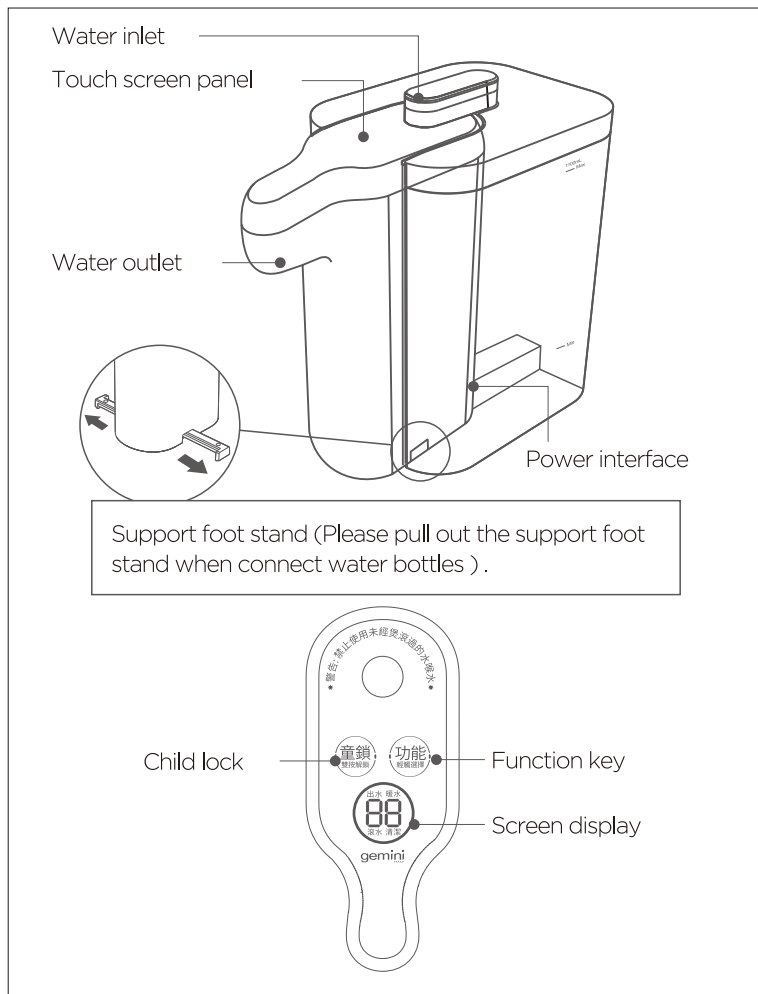


User manual
X1



Bottle cap
X1

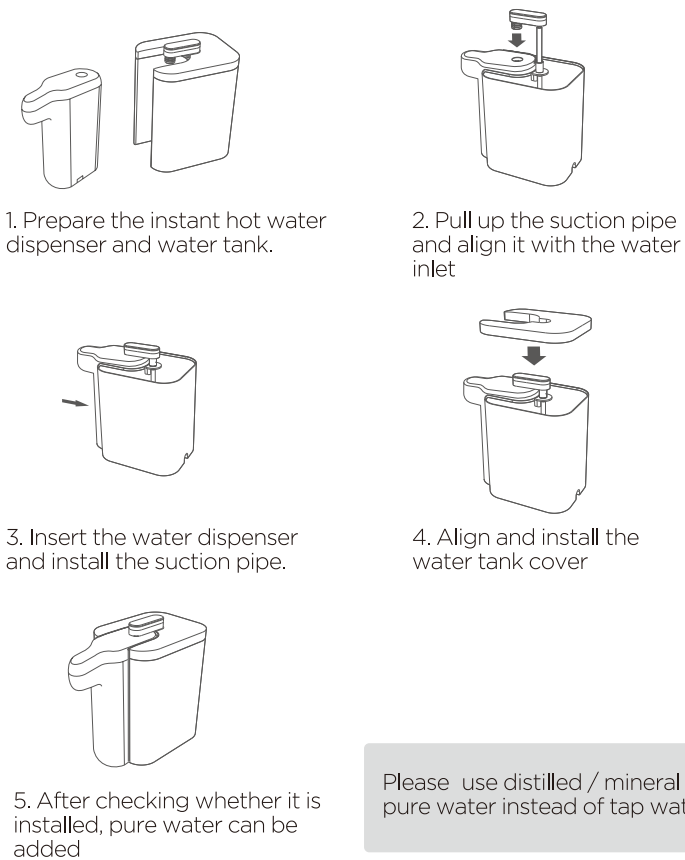
PRODUCT REVIEW



INSTALLATION METHOD

Method 1: suitable for home or office use

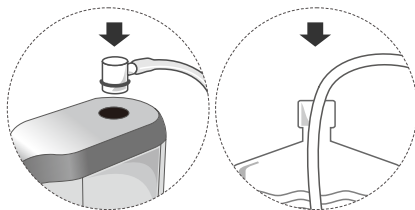
Installation of water tank (water tank capacity is about 1100ml)



INSTALLATION METHOD

Method 2: suitable for home or office use (Hose installation)

Connect the water inlet hose to the water inlet on the water dispenser and connect the other end to the water bottle. Be sure to place the water bottle under the table. Then double-click the child lock key to unlock, and then press the function key to select the corresponding water temperature. After 3-5seconds, to make water.



For the first time, please clean the hose and heater by using '45°C' function!

Large bottles of mineral water (> 1000 ml) , please put it under the table. The water storage bottle or water inlet hose should not be higher than the water dispenser, otherwise there will be slightly water dripping at the water outlet of the water dispenser.



Method 3: usage on bottled water

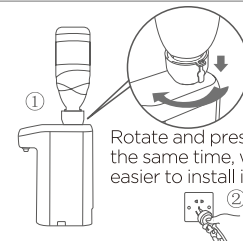


Bottle cap + bottled water (330 ~ 1000ml)

Release the air-plug

When filling bottled water, please plug the air- plug and insert it upside down to the water dispenser's water inlet. Before starting to make water, the air-plug should be opened to prevent the water bottle from being flattened.

Plug the air-plug when changing water bottles.




Rotate and press down at the same time, which is easier to install in place.

1. Screw off the original bottle cap of bottled mineral water or purified water. Replace the bottle cap with the original cap and screw it into the mouth of the water bottle.

2. When the water bottle is inserted into the water inlet, be sure to plug it into the bottom, and then connect the power supply to use.

USE RANGE OF BOTTLE CAP

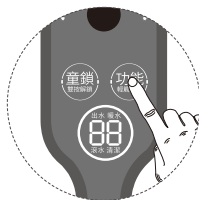
	Small diameter	External diameter 27.5-28mm(without thread) Height of 10 mm
	Large diameter	External diameter: 34.7mm(without thread) Height 9 mm

Since there are different diameters of water bottles in the market, please use the lid of the bottle that meets the above information.

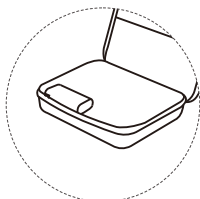
HOW TO USE IT



1. Double click the unlock key and the display will light up.



2. Click the function key to select the function (Output→45 °C→60 °C→80 °C →Hot water(100 °C)→clean), select the function and prepare water after 3-5 seconds. Press unlock/function key to stop preparing water



3. When storing and placing the instant hot water dispenser, please use the cleaning function to empty the residual water. (pull out the water bottle or hose to select the cleaning function, and wait until the program is completed).

WATER YIELD

Category	Output	45 °C	60 °C	80 °C	Hot water
Water tank	~260mL	~280mL	~250mL	~260mL	~300mL
Hose	~260mL	~280mL	~280mL	~280mL	~280mL
Bottle	~260mL	~260mL	~275mL	~280mL	~280mL

(The measured value is from laboratory data, for reference only)

TEMPERATURE RANGE VALUE

Temperature	Output	45 °C	60 °C	80 °C	Hot water
Scope	No heating	±10 °C			95-100 °C

(The measured value is from laboratory data, for reference only)

ATTENTION



1. It is strictly forbidden to cover the outlet within 1cm.



2. Do not remove the cup when the hot water comes out to prevent scalding.



3. After heating, a small amount of residual water will flow out, and the water cup can be removed after 3 seconds.



4. Turn off the power switch when the ambient temperature is under 0 °C.



5. It is forbidden to turn the product upside down after being plugged. It is forbidden to invert the product when there is water.



6. The boiling water of this product is high temperature water, and the actual outlet water temperature will be different due to the environment and voltage.



7. Please do not disassemble or refit the product by yourself, otherwise it will lead to water leakage, leakage and other safety accidents.



8. If the product is not used for a long time (more than two days), please unplug the power supply and water source, and drain the residual water from the machine.

ATTENTION



9. When the bottled water is empty, please replace it in time.



10. It is strictly forbidden to wash the water dispenser body into the water or to clean the product with splash water.



11. When the product needs to be cleaned, use a soft cotton cloth dipped in an appropriate amount of purified water to wipe it. Do not wipe the water dispenser body with organic solution such as gasoline, so as to avoid discoloration of the machine surface.

TIPS

1. Please plug off the power supply when the product is not use for a long time.
2. In case of water leakage or leakage of this product, please plug off the power supply immediately and inform after sale service center.
3. The power cord link of this product is X-type connection. If the power cord cord is damaged, it must be replaced with special cord or special components purchased from its manufacturer or after sale service center.

COMMON FAULT JUDGMENT AND TREATMENT

It is normal for this product to appear the following conditions in the process of use. Please feel free to use it:

1. The sound of water pump pumping during heating is normal;
2. When the water temperature is low, the heating speed will be relatively slow, which is a normal phenomenon;
3. The outlet water temperature may be lower at higher altitude, which is a normal phenomenon;
4. When the water is prepared at a higher temperature at a higher altitude, steam may be sprayed out of the water, which is a normal phenomenon. Be careful of scalding.

If there is any difficult fault in use, please repair it by our after sale service center. In order to save your time, please refer to the following reasons for self inspection before sending for inspection.

SOLUTIONS TO PROBLEMS

Fault	Probable cause	Countermeasures
The machine does not work, the machine does not make water. The display screen does not show anything.	The machine is still in the child lock state	Plug in the power supply, double-click the child lock key to unlock
After "do" "do" "do" sound, the water machine flashes	Lack of water	Add water source
Water outlet sprays steam	Water inlet nozzle is not sealed in place	Rotate the water inlet nozzle and press it down in place

SPECIFICATIONS

Model No.: GWD210B

Mains Voltage & Frequency: 220-240V - 50Hz

Power consumption: 2100W

Water Tank Capacity: 1.1 liters

Product Dimension: 66(W) x 188(H) x 140(D) mm

Water Tank+ Product Dimension: 122(W) x 195(H) x 210(D) mm

*The final product specification may be varied according to a different lot of material and actual input voltage power of the usage area.

安全指引

- 1、請於操作前詳閱操作指引
- 2、8歲以下兒童、傷健人士、精神及感官受到影響及缺乏操作常識和經驗者不適宜獨立操作此產品。如需操作需有相關人士從旁指引及對其行為安全負責。
- 3、如飲水機出現問題，請聯絡代理商或合資格人士處理並不要自行對其進行維修以免發生危險。
- 4、請遵從飲水機上的規格表資料連接電源。
- 5、此飲水機只適用於家居室內操作，並不適用於商業用途。
- 6、不要在濕度高的室間內使用。
- 7、不要放置飲水機在靠近窗邊工作的平臺上工作，以免受室外天氣影響致短路等意外發生。機器旁禁止放置易燃物品，底部不能墊泡沫、紙板等雜物，以免水分積聚而導致漏電。本機不適合戶外或有可能有水噴濺的地方安裝使用。
- 8、使用此飲水機時需放置在穩定、平面、及不受阻礙的平臺上操作。
- 9、不要放置電源線在工作平臺的邊緣以防發生危險。
- 10、使用時不要放置任何物件蓋著或阻礙飲水機運作。
- 11、使用飲水機時需保持雙手乾爽以免發生危險。
- 12、清潔前或發生故障時需要關上飲水機並從電源插座移除插頭。
- 13、當飲水機墜入水時，立刻移除插頭及不要再使用此飲水機。
- 14、電源插座必須可靠接地，插座額定電流應該大於10A，在使用中，如果發現機身有麻電的感覺，請立即關閉電源，並請專業電工檢查電源插座是否接地。
- 15、請勿接觸本產品出水口，以防燙傷
- 16、使用本產品前請檢查插座承載功率足夠大，以防止線路超載，請檢查所用的電壓、功率是否與產品標識相符；
- 17、此飲水機只可使用蒸餾水、礦泉水或已經煲滾過的水喉水，不能加熱其他液體以免對飲水機造成損害。
- 18、這水箱之最小的注水量為0.2公升，注水時需注意食水已過0.2公升的水線，最大水量為1.1公升。
- 19、不要使用任何外置式的時間掣或遙控掣對飲水機進行操控。
- 20、移動本產品時請勿拉電源線，使用時請不要把電源線繞著飲水機。
- 21、如本產品的電源線有損壞痕跡，為保障安全，請立即停止使用並聯絡供應商或代理商或合資格人員作更換。

13

使用即熱式飲水機時注意事項

- 本即熱式飲水機只可使用蒸餾水、礦泉水或已經煲滾過的水喉水，不可以使用未經過濾淨化的自來水或其他液體。
- 製80°C或100°C高溫水時，製水完畢時(嗒一聲)，高溫蒸汽還會有小部份停留在出水嘴處，會產生少量高溫水滴下，請於3秒後再拿走水杯，以防燙傷。
- 瓶裝水安裝水瓶蓋時請把水瓶蓋的解壓塞堵上，倒插在飲水機接水口後，拉開解壓塞方可製水，此操作有效防止吸扁瓶身。為更好使用水瓶蓋，如發現水瓶蓋內有藏水，請拉開解壓塞把藏水從解壓口流走。
- 不可添加超過40°C的水，會造成飲水機停止工作。
- 本即熱式飲水機自帶記憶功能，雙擊解鎖後，單擊功能鍵顯示上一次使用過的水溫，無需重新選擇水溫。
- 本即熱式飲水機程式設定為滾水，高溫水經過軟管→水氣分離裝置→出水嘴空氣→水杯，會損失部份水溫。

注意!此電水壺只適合家庭用途。

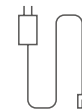
產品清單



主機X1



水箱X1



電源線X1



進水軟管X1



收納袋X1



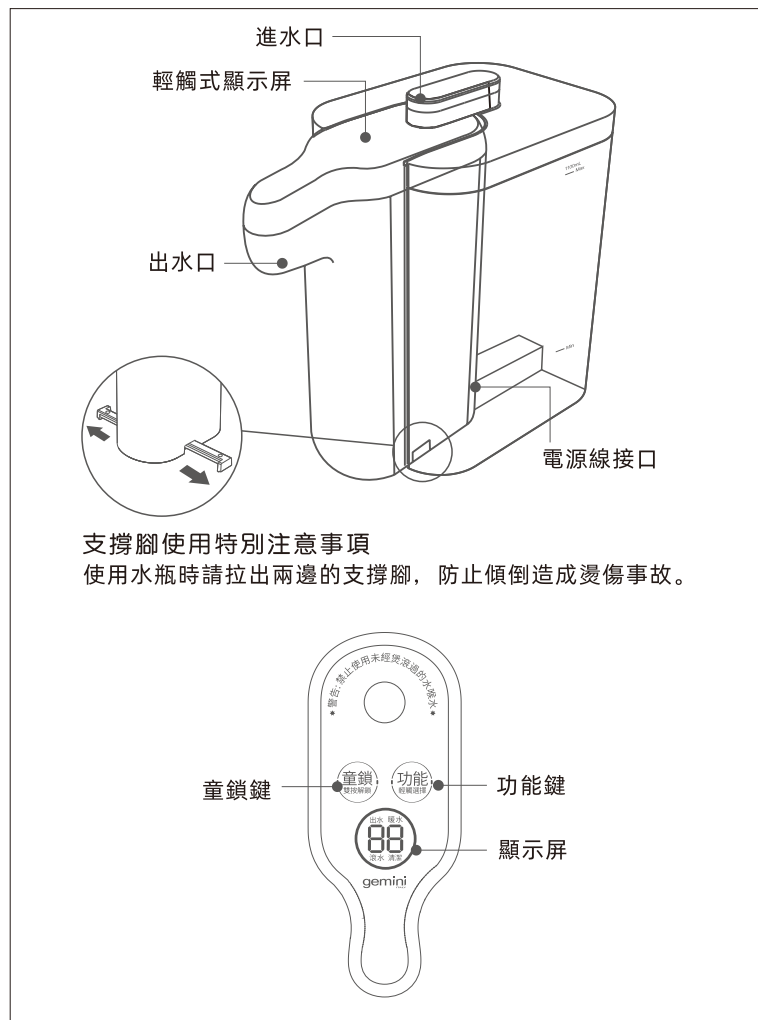
說明書X1



水瓶蓋X1

14

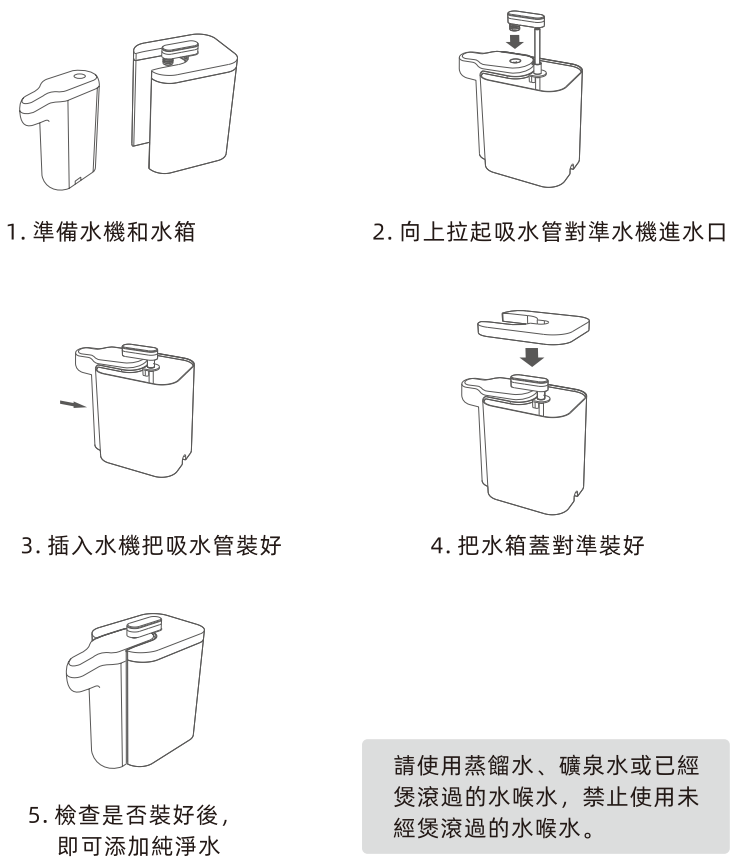
產品部件說明



安裝方法

方法1：適用於家用或辦公室

安裝水箱 (水箱容量約1100mL)

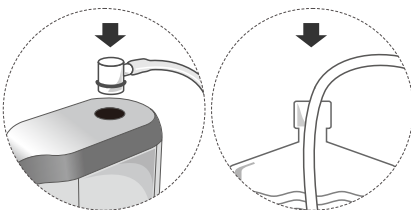


安裝方法

方法2: 適用於家用或辦公室

安裝軟管

把進水軟管連接上機器上的進水口，另一端連接到桶裝水桶，務必把桶裝水瓶放置於枱下。然後雙擊童鎖鍵解鎖，再按功能鍵選擇相應水溫，3-5秒後製水。



初次使用時，請先按45°C暖水出水(約一杯份量)，以便清潔軟管及加熱器內部!

使用大瓶礦泉水(>1000毫升)請放至枱下。使用桶裝水時，務必將桶裝水瓶放至枱下，儲水瓶或進水軟管不可高於水機，否則會造成水機出水口有輕微滴水。



安裝方法

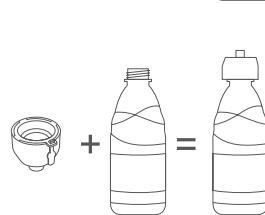
方法3: 安裝在瓶裝水上

水瓶蓋+瓶裝水(330~1000mL)



解壓塞

裝水瓶前請堵住此塞。製水前拉開此塞。裝上瓶裝水時請堵住此塞，倒插到水機接水口。開始製水前要把解壓塞拉開，以防止礦泉水瓶吸扁。更換水瓶前請務必堵住此塞。



旋轉同時向下按，更易安裝到位。

1. 把瓶裝礦泉水或純淨水原瓶蓋擰開，水瓶蓋替換原瓶蓋擰上水瓶瓶口處。

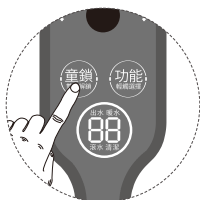
2. 水瓶倒插入接水口，務必要插到接水口底部，然後接上電源，即可使用。

水瓶蓋瓶口使用範圍

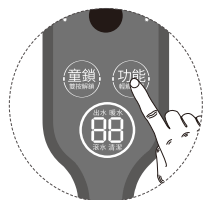
	小口徑	外直徑Φ27.5~28mm(不含螺紋) 高度10mm
	大口徑	外直徑Φ34.7mm(不含螺紋) 高度9mm

因市面上水瓶口徑不一，使用水瓶蓋請符合以上資料的瓶裝水；特別注意平行紋瓶口和飲料瓶口不適用。

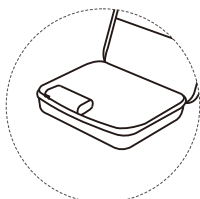
使用步驟



1. 雙擊解鎖鍵，顯示幕亮起。



2. 單擊功能鍵選擇功能
(出水→45°C→60°C→80°C→滾水→清潔)，
選擇好功能3-5秒後製水，按下解鎖/功能鍵
可停止製水。



3. 收納放置時，請使用清潔功能排空機內餘水，
拔掉水瓶或軟管選擇清潔功能，待排空完畢即可。

製水量表

類別	出水	45°C	60°C	80°C	滾水
水箱	~260mL	~280mL	~250mL	~260mL	~300mL
軟管	~260mL	~280mL	~280mL	~280mL	~280mL
水瓶蓋	~260mL	~260mL	~275mL	~280mL	~280mL

溫度範圍值

溫度	出水	45°C	60°C	80°C	滾水
範圍	不加熱	±10°C			95~100°C

本頁表所列資料為實驗資料，因氣候與其他環境因素影響會有差異，僅參考。

注意事項



1. 出水口以下
1cm內嚴禁任何
遮擋。



2. 在熱水出水時，
請勿移走接水杯，
以防燙傷。



3. 加熱結束後，
會有少量餘水流
出，3秒後可移走
水杯。



4. 當機器處於0°C
以下環境下時，請
關閉電源。



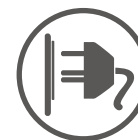
5. 禁止通電後將
本產品倒置，嚴禁
本產品有水情況下
倒置。



6. 本產品開水均為
高溫出水，實際出
水溫度會因環境及
電壓有所差異。



7. 請勿自行拆卸和
私自改裝本產品，
否則容易導致漏水、
漏電等安全事故。



8. 如長時間(兩天
以上)不使用本產品，
請切斷電源、水源，
並將機器內餘水排
盡。

注意事項



9. 當瓶裝水用完時請及時更換。



10. 嚴禁用水沖洗機身或用噴濺水清洗本產品。



11. 本產品需要清潔時，可使用柔軟的棉布蘸適量的淨水擦拭，請勿用汽油等有機溶液擦拭機身，避免機器表面褪色。

提示

1. 本產品長期停用時或清潔時請先切斷電源。
2. 本產品一旦出現漏水或者漏電情況，請立即切斷電源，並請通知本維修中心。
3. 本產品電源線鏈結為X型連接，如果電源線軟線損壞，必須用專用軟線或從其製造商更換。

常見故障判斷及處理

本產品在使用過程中出現下列情況屬於正常現象，請放心使用：

1. 在加熱過程中會有水泵抽水的聲音，屬於正常現象；
2. 當水溫度較低時，製熱速度會相對慢一點，屬於正常現象；
3. 海拔較高的地方可能出水溫度偏低，屬於正常現象；
4. 海拔較高的地方在選較高溫度的模式下製水時，可能會出現出水噴蒸汽現象，屬正常現象，小心燙傷。

常見故障判斷及處理

使用中如有疑難故障，請由本公司當地特許經銷商或服務商檢修，為了節省您的時間，送檢前，請先參照以下原因自行檢查。

故障現象	可能原因	解決對策
機器不運作 顯示幕無顯示	機器處於安全鎖狀態	雙擊童鎖鍵解鎖
滴滴滴三聲 開水機閃退	缺水	添加水至容器
出水口噴蒸汽	進水嘴安裝沒有密封到位	進水嘴旋轉向下按到位

產品規格

型號： GWD210B

電壓： 220 -240伏~

頻率： 50赫茲

功率： 2100瓦

水箱容量： 1.1公升

產品尺寸: 66(闊) x 188(高) x 140(深) mm

水箱+產品尺寸: 122(闊) x 195(高) x 210(深) mm

*相關產品的規格，可能會因配件批次或實際使用地區的電壓差異而有所不同。