

gemini
ITALY

35L Electric Oven

35L 電焗爐

Model No. 型號 : GOV35DG

1600W

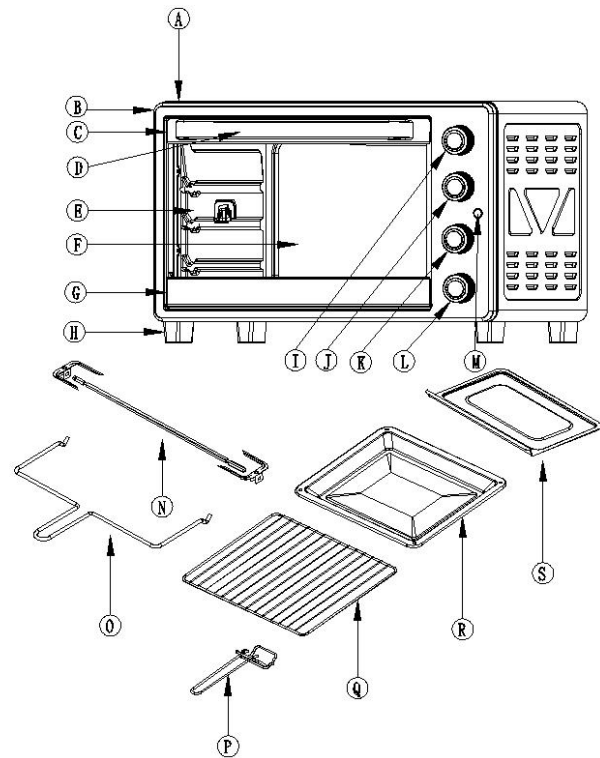
Before using your product for first time, please read this instruction manual.
在使用本產品前，請仔細閱讀本說明書並保存好。

IMPORTANT SAFEGUARDS

1. When using this electric oven, basic precautions should always be followed, included the followings:
2. Read all instructions.
3. Do not touch hot surface, use handles and knobs.
4. Close supervision is necessary when any appliance is used by or near children.
5. To protect against electric shock, do not immerse cord, plug or any parts of the oven in water or other liquids.
6. Do not let cord hang over edge of table or counter, or touch hot surface.
7. Do not operate appliances with damaged cord or plug or after the appliance malfunctions, or have been damaged in any manner. Return the appliance to the nearest authorized service center for examination, repair, or adjustment.
8. Do not use other mismatched accessory, it may cause hazard or injury.
9. Do not place on or near a hot gas or electric burner, or in a heated oven or in a microware oven.
10. When operating the oven keep at least 4 inches of space on all sides of the oven to allow for adequate air circulation.
11. Unplug from outlet when not in use and before cleaning. Allow to cool before putting on or taking off parts, and before cleaning.
12. To disconnect, turn the timer control knob to OFF position, then remove the plug. Always hold the plug, but never pull the cord.
13. Extreme cautions must be used when moving an appliance containing hot oil or other hot liquid.
14. Do not use metal to touch any part of oven when operating.
15. Be extreme cautions when remove the tray or disposing of hot grease or other hot liquid.
16. Do not clean with metal scouring pads pieces can break off the pad and touch electric parts, creating a risk of electric shock.
17. Never leave the appliances unattended while broiling or toasting.
18. Oversized foods and metal utensils must not be inserted in the oven as they may create a fire or risk of electric shock.
19. A fire may cause if oven is covered or touching inflammable material, including curtains draperies, walls and like, when on operation, Do not store any item on the oven during operation.
20. Extreme caution should be exercised when using containers constructed of anything other than metal or glass.
21. Do not place any of the following materials on the oven: cardboard, plastic, paper or anything similar.
22. Do not store any materials, other than recommended accessories in the oven.
23. Always wear protective, insulated oven gloves when inserting or removing any items from the hot oven.
24. This appliance is for household use only, do not use outdoor.
25. Do not use appliance for other than intended use.
26. This appliance can be used by children aged from 8 years and above and persons with reduced physical, sensory or mental capabilities or lack of experience and knowledge if they have been given supervision or instruction concerning use of the appliance in a safe way and understand the hazards involved.
27. Children shall not play with the appliance. Cleaning and user maintenance shall not be made by children without supervised.
28. If the supply cord is damaged, it must be replaced by the After-sales Service Center or a similarly
29. When opening and closing the oven door, be careful and gently open and close the door. Do not close and pull down the glass door forcefully to avoid breaking the glass.

qualified person in order to avoid a hazard.

PARTS OF APPLIANCE



- A: Housing
- B: Front panel
- C: Upper door clip
- D: Door handle
- E: Glass door
- F: Back panel
- G: Down door clip
- H: Oven foot
- I: Top grill temperature control knob
- J: Function knob (OFF/FERMENT/ROTISSERIE/CONVECTION/ROTISSERIE & CONVECTION)
- K: Bottom grill temperature control knob
- L: Timer knob
- M: Power indicator
- N: Rotisserie set
- O: Rotisserie handle
- P: Bake & rack handle
- Q: Bake rack
- R: Bake tray
- S: Crumb tray

OPERATING INSTRUCTION




Before using your oven for the first time

Be sure to

1. Make sure that the oven is unplugged and the TIMER knob is on the OFF position.
2. Remove all the accessories and wash them in hot soak water or in the dishwasher.
3. Thoroughly dry all the accessories and re-assemble in oven. Plug the power cord into the wall socket and you are ready to use your oven.
4. After re-assembling your oven, we recommend that you run the oven at the max temperature for approximately 15 minutes to eliminate any dirty oil on its surface.
5. The oven may emit smoke with first time use under normal operating conditions and will soon disappear after 5 minute.
6. Top and Bottom grill temperature control knob have five marks with "OFF", "100°C", "150°C", "200°C" and "250°C", both top and bottom heating elements will not be turned on between the range of 0 to 100 degree (no reach the silkscreen at 100 degree). Due to the thermostat is very sensitive parts, it will be effected by the climate change around. It is normal if the heating elements start working when

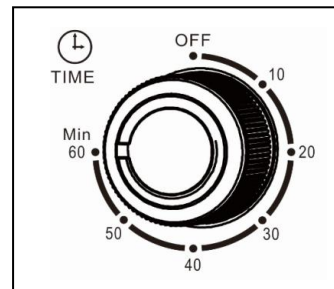
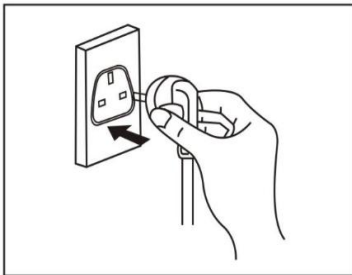
the top or bottom grill temperature control knob is approaching "100°C"

FUNCTION KNOB

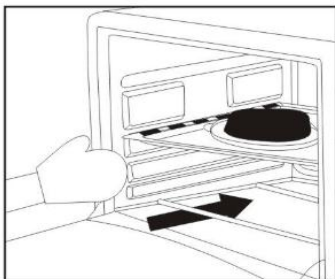
1. Set the selector to "FERMENT" position, the Top & Bottom grill temperature knob must be at "OFF" position and adjust the operation time at timer knob, then the ferment function will be started.
2. Set the selector to " ROTISSERIE position, set the desired Top & Bottom grill temperature and adjust the operation time at timer knob, the Rotisserie function will be started.
3. Set the selector to " CONVECTION position, set the desired Top & Bottom grill temperature and adjust the operation time at timer knob, the Convection function will be started.
4. Set the selector to " ROTISSERIE & CONVECTION position, set the Top & Bottom grill temperature and adjust the operation time at timer knob, the Convection & Rotisserie function will be started together.
5. Set the "OFF" position at function knob, all functions are disabled; it can be operated by the Top & Bottom grill temperature control function only.

HOW TO USE YOUR OVEN FOR BAKING AND GRILLING

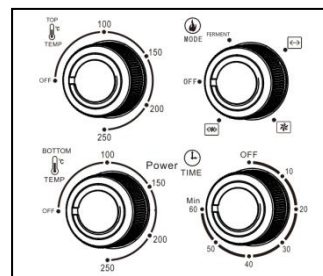
1. Put the power plug in the wall socket
2. Pre-heat the oven with approximate 15 minutes and set the highest temperature & the Top & Bottom grill temperature knob together



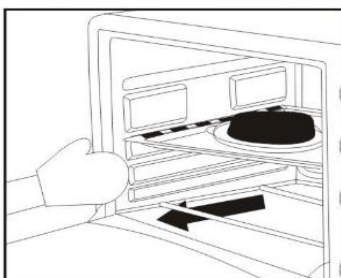
3. Put the food into oven



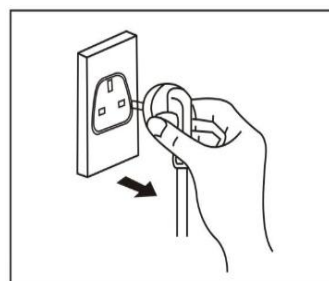
4. Set the desired baking function, top & bottom grill temperature and cooking time accordingly



5. Take out the food when the cooking process is finished



6. Unplug the power plug



HOW TO USE THE ROTISSERIE FUNCTION

1. Place the bake tray in the lowest grill position to catch the oil dripping from the food during baking.
2. Put the whole chicken/meat skewered with a seasoning on the rotisserie set and fix it with two tines and tighten with a fastening screw.
3. Set the Top and Bottom grill temperature knobs to the desired temperature.
4. Set the Function knob to the ROTISSERIE or ROTISSERIE & CONVECTION function position.
5. The power indicator lights up when the timer knob is set the desired baking time. Then the rotisserie set starts rotating, the cooking process starts operation.
6. Hear a "ding" sound when the cooking process is completed. Make sure the food is cooked thoroughly and can be taken out by the rotisserie handle.
7. Unplug the power plug after use.

CLEANING

8. It is important that you clean the appliance after each use to prevent an accumulation of grease and avoid unpleasant odors.
9. The appliance must be cool down and unplug from outlet before cleaning.
10. Do not immerse appliance in water or wash it under waterspout.
11. Removable grill rack and bake tray can be washed, as normal kitchen ware.
12. Clean outer surface of appliance with damp cloth.
13. Do not use abrasive cleaner or sharp utensils to clean the oven, as scratching may weaker it and cause shattering,
14. Let all removable accessories and surfaces dry thoroughly prior to plugging oven in the wall socket.

PRODUCT SPECIFICATION

Model No. : GOV35DG

Power: 1600 W

Voltage/frequency: 220V~50Hz

Capacity: 35L

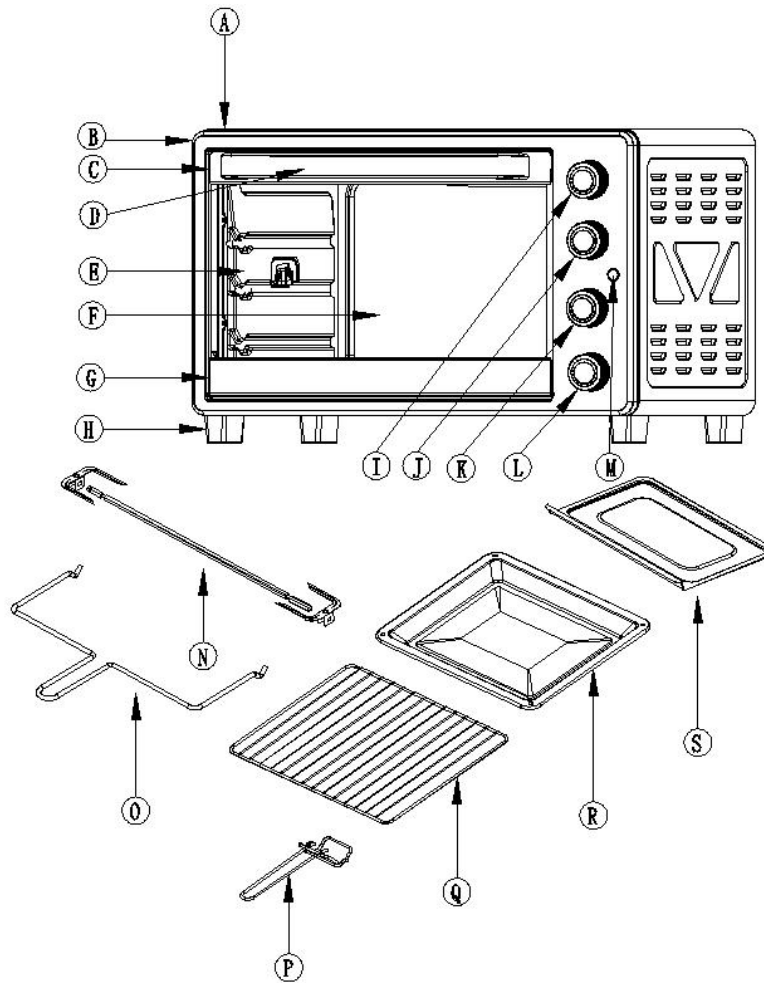
Product dimension: 522(W) x 327(H) x 381(D) mm

*The final product specification may be varied according to a different lot of material and actual input voltage power of the usage area.

安全注意事項

1. 在使用本產品前，請遵循以下基本安全措施。
2. 仔細閱讀本使用說明書。
3. 在使用時焗爐時，不允許兒童操作或接近焗爐。
4. 為防止觸電，嚴禁將電源線，插頭浸入水中。
5. 電源線不能接觸焗爐的受熱面。
6. 不要讓電源線懸掛在桌子或櫃檯邊緣或接觸發熱表面。
7. 電源線、插頭、附件損壞或電器設備出現故障的情況下，為避免危險切勿操作電器，請聯繫本司的客戶服務中心並攜帶產品到指定維修中心檢查或維修。
8. 不要使用非本機附送的配件，以免發生危險及造成傷害。
9. 不要將焗爐放在靠近熱水器，電爐或微波爐等熱源的地方。
10. 在使用焗爐時，要保證焗爐每一邊至少有 4 英寸的空間，讓空氣流通。
11. 當不使用焗爐或清潔時，請先拔掉電源線插頭，要先冷卻才能進行拆卸配件。
12. 不使用時，需把電源線拔除，將定時器旋鈕調到“OFF”處，然後拔下電源插頭，拔下插頭時，請務必抓住插頭，不要拉扯電源線。
13. 移動裝有熱油或其他高溫液體的器具時，必須格外小心。
14. 不要用金屬片去接觸焗爐的任何部件。
15. 移動托盤或處置熱油脂或其他高溫液體時要格外小心。
16. 焗爐在使用時，不要使用帶金屬的刷子去清潔，因可能與帶電部件接觸，造成危險。
17. 當焗爐在使用時，請注意有人看管。
18. 體積較大的食物或玻璃，塑膠類的器皿切勿放入焗爐內烘烤，以免危險。
19. 焗爐頂部不得盛放任何物品或覆蓋易燃物品（如窗簾，牆紙等），容易釀成火災。
20. 使用一些由金屬或玻璃製成的容器時要格外小心。
21. 請勿將紙板，塑膠，紙等類似易燃物品放在焗爐內加熱。
22. 不要把非本機配備的配件放入焗爐內使用。
23. 從焗爐內插入或取出物品時，一定要帶上防護套或隔熱手套。
24. 本產品只可作家庭用途，不能放置戶外使用。
25. 不可讓本產品作非指定用途使用。
26. 該電器可適用於 8 歲以上的兒童以及身體，感官或者智力能力下降和缺乏經驗和知識的人群，他們使用該電器需要得到安全使用電器的監督或者指導，並且瞭解所涉及的危險。
27. 成人應該指導小孩不可把玩此電器。
28. 定期檢查本產品的電源線。如果電源線損壞，必須由本公司售後服務部或合格的電器技師更換，以避免危險。
29. 打開及關烤箱門的時候，一定要小心，輕輕的開門和關門。不能用力關閉和向下拉玻璃門，以免導致玻璃碎裂。

產品部件



- | | |
|--------------------------------------|---------------|
| A. 主機身 | K. 下發熱管溫度設定旋鈕 |
| B. 正面 | L. 定時器旋鈕 |
| C. 上門板 | M. 電源指示燈 |
| D. 門把手 | N. 轉燒工具套 |
| E. 玻璃門 | O. 轉燒托手柄 |
| F. 後板 | P. 烤盤和烤網手柄 |
| G. 下門板 | Q. 烤網 |
| H. 爐腳 | R. 烤盤 |
| I. 上發熱管溫度設定旋鈕 | S. 碎屑盤 |
| J. 功能設定旋鈕
(關機/發酵/轉燒/熱風對流/轉燒+熱風對流) | |




操作指南

首次使用

1. 初次使用焗爐前，將定時器旋鈕至於 OFF 位置。
2. 打開玻璃門，把所有部件清理乾淨及待本機完全冷卻才進行清潔。
3. 將所有部件放進焗爐裏組裝好，然後接駁電源，即可以使用。
4. 裝好部件後，建議把上及下溫度發熱管旋鈕調到最大，預熱 15 分鐘左右，這樣可以消除殘留的油脂。
5. 第一次使用焗爐時有黑煙冒出是正常現象，大約五分鐘後會逐漸消失。
6. 上下發熱管溫度設定旋鈕共有 5 個標記，分別是“OFF”，“100°C”，“150°C”，“200°C”

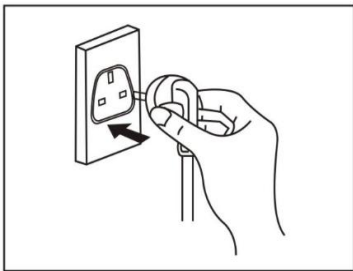
和“250°C”，上下發熱管旋鈕設定在“OFF”和100°C之間時，發熱管一般是不會工作的。由於溫控器是非常靈敏的機械元件，受周圍環境和濕度的影響較大，不排除旋鈕未到100°C時，發熱管已經啟動工作，屬於正常現象。

功能選擇設定旋鈕

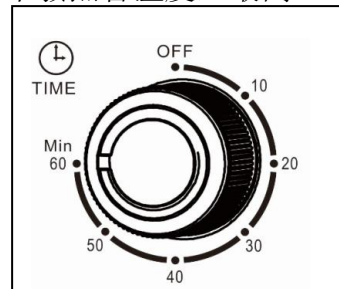
1. 選擇“FERMENT”功能位置，必須將上/下發熱管調到”OFF”，並用時間開關旋鈕來控制發酵的時間。
2. 選擇“”轉燒功能位置，並需調較上/下發熱管的溫度和時間開關旋鈕來控制焗爐內溫度和烹飪時間，轉燒功能將會啟動。
3. 選擇到“”熱風對流位置，並需調較上/下發熱管的溫度和時間開關旋鈕來控制焗爐內溫度和烹飪時間，熱風功能將會啟動。
4. 選擇到“”轉燒及熱風對流位置，並調較上/下發熱管的溫度和時間開關旋鈕來控制焗爐內溫度和烹飪時間，轉燒和熱風功能將同時工作，。
5. 選擇到“OFF”位置，發酵，轉燒和熱風功能都將停止工作。若調較上/下發熱管的溫度和時間開關旋鈕來控制焗爐內溫度和烹飪時間，上/下發熱管溫度設定功能仍然可以工作。

烘烤功能的使用方法

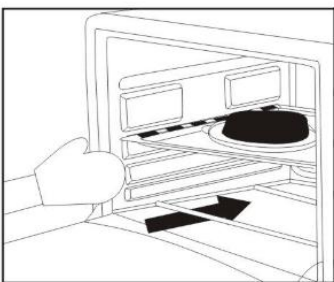
1. 插上牆上的電源插頭



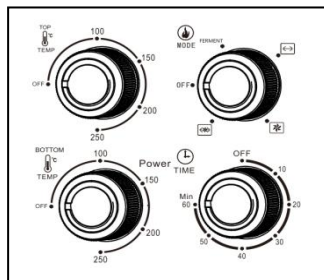
2. 焗爐預熱約 15 分鐘，並調較上及下發熱管溫度至最高



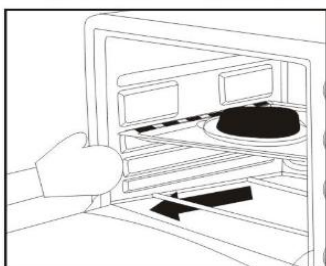
3. 放入食物開始烘烤



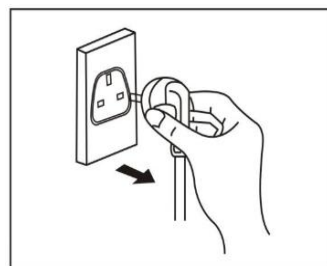
4. 設置所需的烘烤功能，上及下發熱管溫度及烘烤時間



5. 烘烤完成後，便可取出食物



6. 最後拔除電源線插頭



如何使用轉燒功能

1. 將烤盤置於爐內最低層燒烤位，以便接住烘烤過程中食物滴下的油脂。
2. 把配好調料的整隻雞/肉串於轉燒叉上，並用兩轉叉片固定後，用緊固螺絲擰緊兩轉叉片。
3. 使用上下發熱管溫度旋鈕選擇所需烹調的溫度。
4. 將功能選擇旋鈕順時針方向設置到轉燒/轉燒及熱風功能檔位。
5. 插上電源後，使用時間選擇旋鈕按順時針方向設定烘烤時間。電源指示燈將亮起，轉燒叉開始旋轉工作，烘烤過程開啟。
6. 聽到“叮”的一聲，烘烤過程已完成。確保食物熟透後可用轉燒托手柄取出。
7. 最後拔除電源線插頭。

清潔及維護保養

1. 每次使用後，要清潔烤箱所有部件，以防止油脂積聚和避免留下烘烤味。
2. 清潔焗爐之前，請拔下電源插頭。
3. 不要將焗爐浸在水裡及在水龍頭下清洗。
4. 可以拆卸烤盤和烤網清洗。
5. 清潔表面需用柔軟的濕布輕輕擦拭。
6. 不要使用研磨清潔劑或尖銳的器具清潔焗爐。
7. 每次使用焗爐前要先讓所有部件及焗爐表面保持乾爽

產品規格

產品型號: GOV35DG

額定功率: 1600W

電壓頻率: 220V~50Hz

焗爐容量: 35L

產品尺寸: 522(闊) x 327(高) x 381(深) 毫米

*相關產品的規格，可能會因配件批次或實際使用地區的電壓差異而有所不同。

請記錄下列產品資料

- 型號 _____
- 機身號碼 _____
- 經銷商名稱 _____
- 購買日期 _____

本產品不斷改進中，如功能有所更改，恕不另行通知，如有疑問，請於客戶服務中心聯繫，不便之處，敬請原諒。

說明書內容以英文版本為準。

ToolBox Customer Service Center 客戶服務中心
4/F, DCH Building, 20 Kai Chung Road, Kowloon Bay, Hongkong
香港九龍灣啓祥道 20 號大昌行集團大廈 4 樓

Customer Service Hotline 客戶服務熱線：(852) 8210 8210

Service E-mail 電郵地址：8210service@gilman-group.com

Please register now at 請即上網登記：www.toolbox.hk

Website 網址：www.gilman-group.com



Proudly Serviced by



a Gilman Group Company

太平家庭電器