

142.5*210MM

gemini
ITALY

25L Electric Oven

25L 電焗爐

Model No. 型號: GOV25

1600W

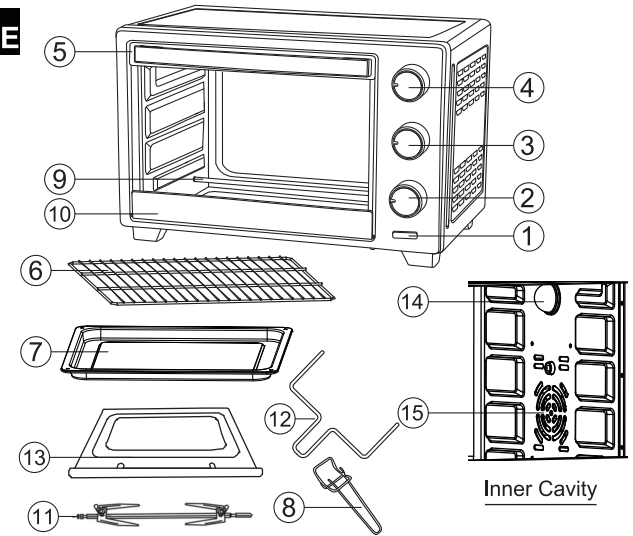
Before using your product for first time, please read the instruction manual
在使用本產品前，請仔細閱讀本說明書并保存好。

IMPORTANT SAFEGUARDS

1. When using this electric oven, basic precautions should always be followed, included the followings:
2. Read all instructions.
3. Do not touch hot surface, use handles and knobs.
4. Close supervision is necessary when any appliance is used by or near children.
5. To protect against electric shock, do not immerse cord, plug or any parts of the oven in water or other liquids.
6. Do not let cord hang over edge of table or counter, or touch hot surface.
7. Do not operate appliances with damaged cord or plug or after the appliance malfunctions, or have been damaged in any manner. Return the appliance to the nearest authorized service center for examination, repair, or adjustment.
8. Do not use other mismatched accessory, it may cause hazard or injury.
9. Do not place on or near a hot gas or electric burner, or in a heated oven or in a microware oven.
10. When operating the oven keep at least 4 inches of space on all sides of the oven to allow for adequate air circulation.
11. Unplug from wall outlet when not in use and before cleaning. Allow to cool before putting on or taking off parts, and before cleaning.
12. To disconnect, turn the timer control knob to OFF position, then remove the plug. Always hold the plug, but never pull the cord.
13. Extreme cautions must be used when moving an appliance containing hot oil or other hot liquid.
14. Do not use metal to touch any part of oven when operating.
15. Be extreme cautions when remove the tray or disposing of hot grease or other hot liquid.
16. Do not clean with metal scouring pads pieces can break off the pad and touch electric parts, creating a risk of electric shock.
17. Never leave the appliances unattended while broiling or toasting.
18. Oversized foods and another metal utensils must not be inserted in the oven as they may create a fire or risk of electric shock.
19. A fire may cause if oven is covered or touching inflammable material, including curtains draperies, walls and like, when on operation, Do not store any item on the oven during operation.
20. Extreme caution should be exercised when using containers constructed of anything other than metal or glass.
21. Do not place any of the following materials on the oven: cardboard, plastic, paper or anything similar.
22. Do not store any materials, other than recommended accessories in the oven.
23. Always wear protective, insulated oven gloves when inserting or removing any items from the hot oven.
24. This appliance is for household use only, do not use outdoor and at commercial use.
25. Do not use appliance for other than intended use.
26. This appliance can be used by children aged from 8 years and above and persons with reduced physical, sensory or mental capabilities or lack of experience and knowledge if they have been given supervision or instruction concerning use of the appliance in a safe way and understand the hazards involved.
27. Children shall not play with the appliance. Cleaning and user maintenance shall not be made by children without supervised.
28. If the supply cord is damaged, it must be replaced by the After-sales Service Center or a similarly qualified person in order to avoid a hazard.

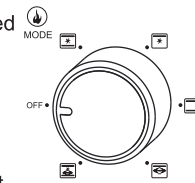
PARTS OF APPLIANCE

1. Power oven indicator
2. Timer
3. Operation mode selector
4. Temperature selector
5. Door handle
6. Grill rack
7. Bake tray
8. Tray handle
9. Heating elements
10. Bottom door clip
11. Rotisserie tool
12. Rotisserie handle
13. Crumb tray
14. Interior lamp
15. Convection



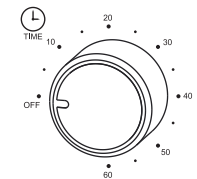
OPERATION MODE SELECTOR DIAL

1. Set the "OFF" position all operation mode are disabled
2. "☐" Top & bottom heating & Convection
3. "☐" Top heating & Convection
4. "☐" Top & bottom heating
5. "☐" Top heating & Rotisserie
6. "☐" Top & bottom heating & Convection & Rotisseries



TIMER DIAL (INTERIOR LAMP)

- When timer is turned on, the interior lamp is ON.
When timer is turned off, the interior lamp is OFF.



OPERATING INSTRUCTION

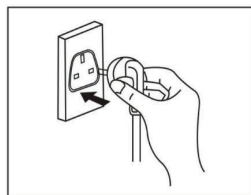
Before using your oven for the first time be sure to :

1. Make sure that the oven is unplugged and the TIMER knob is on the OFF position.
2. Remove all the accessories and wash them in hot soak water .
3. Thoroughly dry all the accessories and re-assemble in oven. Plug the power cord into the wall socket and you are ready to use your oven.
4. After re-assembling the accessories , we recommend that you run the oven at the max temperature for approximately 15 minutes (Top & bottom heating & Convection & Rotisserie mode) to eliminate any dirty oil on its surface.
5. The oven may emit smoke at first time use under normal operating conditions and will soon disappear around few minutes later.

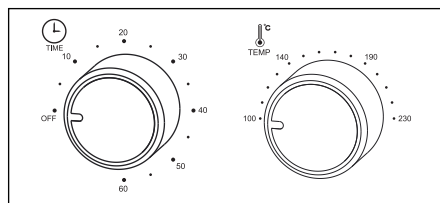
- The temperature setting has at temperature control selector have five marks with "OFF", "100 C", "140 C", "190 C", and "230 C", both top and bottom heating elements will not be turned on between the range of 0 to 100 degree (area near the 100 C).. Due to the thermostat is very sensitive parts, it will be effected by the climate change around. It is normal if the heating elements start working when the temperature control selector is approaching to the "100 C"

HOW TO USE YOUR OVEN FOR BAKING AND GRILLING

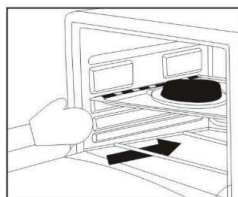
- Put the power plug in the wall socket



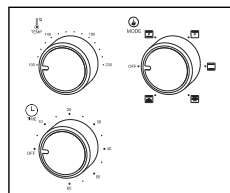
- Pre-heat the oven with approximate 15 minutes and set the Max. temperature selector and Top & bottom heating mode together



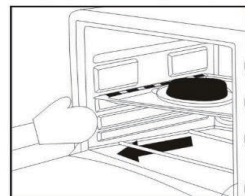
- Put the food into oven



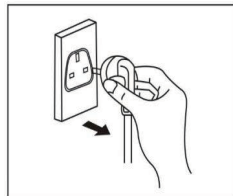
- Set the desired baking operation mode, temperature and cooking time accordingly



- Take out the food when the cooking process is finished



- Unplug the power plug



HOW TO USE THE ROTISSERIE FUNCTION

- Place the bake tray in the lowest grill position to catch the oil dripping from the food during baking. Crumb tray should always place at the inner bottom before operation.
- Put the whole chicken/meat skewered with a seasoning on the rotisserie set and fix it with two tines and tighten with a fastening screw. Put the Rotisserie tool on the position of the Rotisserie tool hole inside of the oven.
- Set the temperature knob to the desired cooking.
- Set the operation mode selector to the Top heating & rotisserie or Top & bottom heating & convection & rotisserie mode position.
- The power indicator lights up when the timer selector is set the desired baking time.
- Hear a "ding" sound when the cooking process is completed. Make sure the food is cooked thoroughly and can be taken out by the rotisserie handle.
- Unplug the power plug after use.

CLEANING

- It is important that you clean the appliance after each use to prevent an accumulation of grease and avoid unpleasant odors.
- The appliance must be cool down and unplug from outlet before cleaning.
- Do not immerse appliance in water or wash it under waterspout.
- Removable accessories, crumb tray, bake tray can be washed, as normal kitchen ware.
- Clean outer surface of appliance with damp cloth.
- Do not use abrasive cleaner or sharp utensils to clean the oven, as scratching may weaken it and cause shattering.
- Let all removable accessories and surfaces dry thoroughly prior to plugging oven in the wall socket for next operation.

PRODUCT SPECIFICATION

Model No. : GOV25

Power: 1600 W

Voltage/frequency: 220-240V~ 50/60Hz

Capacity: 25L

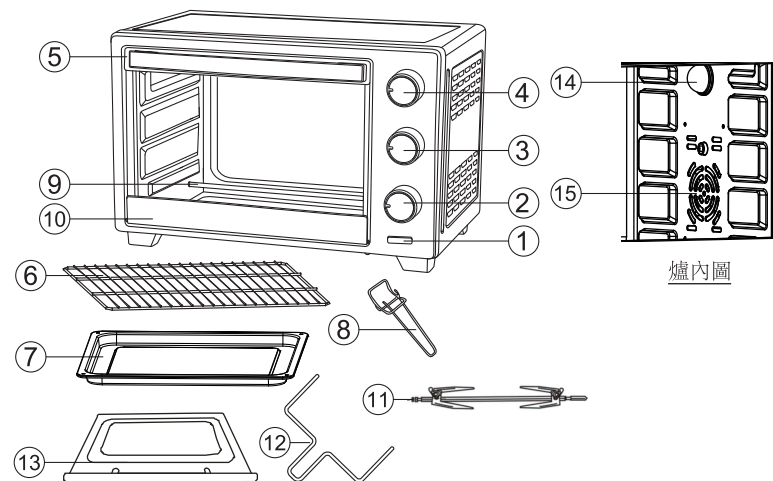
Product dimension: 465 (W) x 303(H) x 343(D) mm

* The final product specification may be varied according to a different lot of material and actual input voltage power of the usage area.

安全注意事項

1. 在使用本產品前，請遵循以下基本安全措施。
2. 仔細閱讀本使用說明書。
3. 在使用時焗爐時，不允許兒童操作或接近焗爐。
4. 為防止觸電，嚴禁將電源線，插頭浸入水中。
5. 電源線不能接觸焗爐的受熱面。
6. 不要讓電源線懸掛在桌子或櫃臺邊緣或接觸發熱表面。
7. 電源線、插頭、附件損壞或電器設備出現故障的情況下，為避免危險切勿操作電器，請聯系本司的客戶服務中心並攜帶產品到指定維修中心檢查或維修。
8. 不要使用非本機附送的配件，以免發生危險及造成傷害。
9. 不要將焗爐放在靠近熱水器，電爐或微波爐等熱源的地方。
10. 在使用焗爐時，要保證焗爐每一邊至少有 4 英寸的空間，讓空氣流通。
11. 當不使用焗爐或清潔時，請先拔掉電源線插頭，要先冷卻才能進行拆卸配件。
12. 不使用時，需把電源線拔除，將定時器旋鈕調到“OFF”處，然後拔下電源插頭，拔下插頭時，請務必抓住插頭，不要拉扯電源線。
13. 移動裝有熱油或其他高溫液體的器具時，必須格外小心。
14. 不要用金屬片去接觸焗爐的任何部件。
15. 移動烤盤或處置熱油脂或其他高溫液體時要格外小心。
16. 焗爐在使用時，不要使用帶金屬的刷子去清潔，因可能與帶電部件接觸，造成危險。
17. 當焗爐在使用時，請注意有人看管。
18. 體積較大的食物或玻璃，塑膠類的器皿切勿放入焗爐內烘烤，以免危險。
19. 焗爐頂部不得盛放任何物品或覆蓋易燃物品（如窗簾，牆紙等），容易釀成火災。
20. 使用一些由金屬或玻璃制成的容器時要格外小心。
21. 請勿將紙板，塑膠，紙等類似易燃物品放在焗爐內加熱。
22. 不要把非本機配備的配件放入焗爐內使用。
23. 從焗爐內插入或取出物品時，一定要帶上防護套或隔熱手套。
24. 本產品只可作家庭用途，不能放置戶外或作商業使用。
25. 不可讓本產品作非指定用途使用。
26. 該電器可適用於 8 歲以上的兒童以及身體，感官或者智力能力下降和缺乏經驗和知識的人群，他們使用該電器需要得到安全使用電器的監督或者指導，並且了解所涉及的危險。
27. 成人應該指導小孩不可把玩此電器。
28. 定期檢查本產品的電源線。如果電源線損壞，必須由本公司售後服務部或合格的電器技師更換，以避免危險。

產品部件

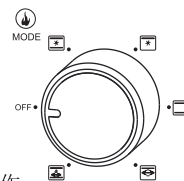


- | | |
|--------------|------------|
| 1. 電源指示燈 | 8. 烤網手柄 |
| 2. 定時器旋鈕 | 9. 發熱管 |
| 3. 烘烤功能設定旋鈕 | 10. 下門板 |
| 4. 發熱管溫度設定旋鈕 | 11. 轉燒架工具套 |
| 5. 門把手 | 12. 轉燒架托手柄 |
| 6. 烤網 | 13. 碎屑盤 |
| 7. 烤盤 | 14. 爐內燈 |
| | 15. 熱風對流 |

功能選擇設定旋鈕

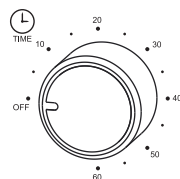
功能選擇設定旋鈕

1. 選擇 OFF 開關功能，全部功能將停止工作。
2. 選擇“☐”上下發熱管及熱風對流功能會啟動同時工作。
3. 選擇“☐”上發熱管及熱風對流功能將會啟動同時工作。
4. 選擇“☐”上下發熱管將同時工作。
5. 選擇“☐”上發熱管及轉燒功能會啟動同時工作。
6. 選擇“☐”上下發熱管及熱風對流及轉燒功能將會啟動同時工作



定時功能

當定時器開始運作，爐內燈也同時運作。
當定時器運作完畢，爐內燈也同時關閉。



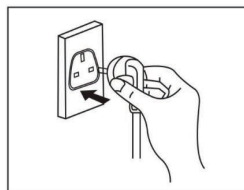
操作指南

首次使用

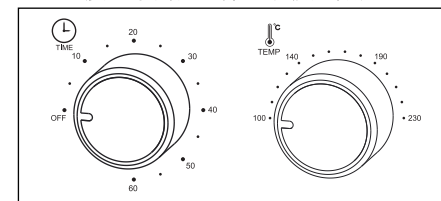
1. 初次使用焗爐前，將定時器旋鈕至於 OFF 位置。
2. 打開玻璃門，把所有配件清理乾淨及待本機完全冷卻才進行清潔。
3. 將所有清潔完的配件放進焗爐裏組裝好，然後接駁電源，即可以使用。
4. 裝好部件後，建議把上及下溫度發熱管旋鈕調到最大，選擇上下發熱管及熱風對流及轉燒功能，加熱 15 分鐘左右，這樣可以消除殘留的油脂。
5. 第一次使用焗爐時有黑煙冒出是正常現象，大約數分鐘後會逐漸消失。
6. 發熱管溫度設定旋鈕共有 4 個標記，分別是“100°C”，“140°C”，“190°C”，“230°C”，發熱管旋鈕設定在“OFF”和 100°C 之間時，發熱管一般是不會工作的。由於溫控器是非常靈敏的機械元件，受周圍環境和濕度的影響較大，不排除旋鈕未到 100°C 時，發熱管已經啟動工作，屬於正常現象。

烘烤功能的使用方法

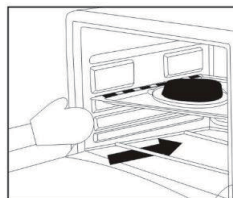
1. 插上牆上的電源插頭



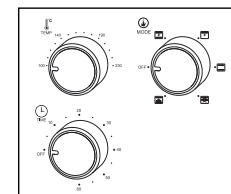
2. 焗爐預熱約 15 分鐘，並調較發熱管溫度至最高及選擇上下發熱管旋鈕



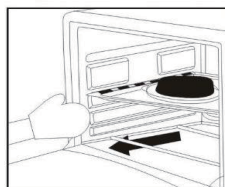
3. 放入食物開始烘烤



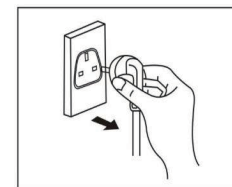
4. 設置所需的烘烤功能，發熱管溫度及烘烤時間



5. 烘烤完成後，便可取出食物



6. 最後拔除電源線插頭



如何使用轉燒功能

1. 將烤盤置於爐內最低層燒烤位，以便接住烘烤過程中食物滴下的油脂。碎屑盤應同時裝放在機內底部位置。
2. 把配好調料的整只雞/肉串串於轉燒叉上，並用兩轉叉片固定後，用緊固螺絲擰緊兩轉叉片後，把轉燒叉放上爐內轉燒叉孔位上。
3. 使用發熱管溫度旋鈕選擇所需烹調的溫度。
4. 將功能選擇旋鈕順時針方向設置到：（上發熱管及轉燒）或（上下發熱管及熱風及轉燒）功能檔位。
5. 插上電源後，使用時間選擇旋鈕按順時針方向設定烘烤時間。電源指示燈將亮起，
6. 聽到“叮”的一聲，烘烤過程已完成。確保食物熟透後可用轉燒托手柄取出。
7. 最後拔除電源線插頭。

清潔及維護保養

1. 每次使用後，要清潔烤箱所有配件，以防止油脂積聚和避免留下烘烤味。
2. 清潔焗爐之前，請拔下電源插頭讓焗爐完全冷卻。
3. 不要將焗爐浸在水裏及在水龍頭下清洗。
4. 可以拆卸烤盤，轉叉架工具，碎屑盤及其他配件清洗。
5. 清潔表面需用柔軟的濕布輕輕擦拭。
6. 不要使用研磨清潔劑或尖銳的器具清潔焗爐。
7. 每次使用焗爐前要先讓所有配件及焗爐表面保持幹爽。

產品規格

產品型號: GOV25

額定功率: 1600W

電壓頻率: 220-240V~ 50/60Hz

焗爐容量: 25L

產品尺寸: 465(闊) x 303(高) x 343(深) 毫米

* 相關產品的規格，可能會因配件批次或實際使用地區的電壓差異而有所不同。

請記錄下列產品資料

- 型號 _____
- 機身編號 _____
- 經銷商名稱 _____
- 購買日期 _____

本產品不斷改進中，如功能有所更改，恕不另行通知，如有疑問，請與客戶服務中心聯絡，不便之處，敬請原諒。

說明書內容以英文版本為準

ToolBox Customer Service Centre 客戶服務中心：
4/F, DCH Building, 20 Kai Cheung Road, Kowloon Bay, Hong Kong
香港九龍灣啓祥道20號大昌行集團大廈4樓

Customer Service Hotline 客戶服務熱線：(852) 8210 8210
Service E-mail 電郵地址：8210service@gilman-group.com
Please register now at 請即上網登記：www.toolbox.hk
Website 網址：www.gilman-group.com



Proudly Serviced by:

ToolBox

a Gilman Group Company

太平家庭電器