

gemini
ITALY

多功能養生壺
MULTI-FUNCTIONAL HEALTH KETTLE
MODEL NO.型號 : GMK800
600-700W

Before using your product for first time, please read this instruction manual.
在使用本產品前，請仔細閱讀本說明書並保存好。

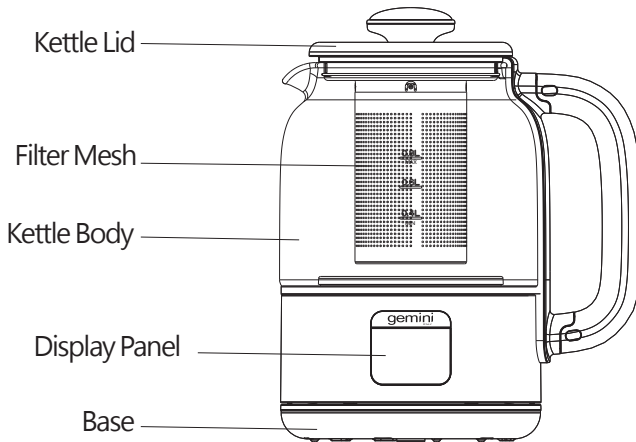
Safety Instructions

1. Please read these instructions carefully and retain for future reference.
2. This appliance is not intended for use by persons (including children under 8 years old) with reduced physical, sensory or mental capabilities, or lack of experience and knowledge, unless they have been given supervision or instruction concerning use of the appliance by a person responsible for their safety. Children should be supervised to ensure that they do not play with the appliance.
3. All the repairs carried out solely by a qualified electrician. Never try to repair the appliance yourself.
4. Use this appliance solely in accordance with these instructions.
5. Never use the appliance at outdoor or in a humid room.
6. Before use, ensure the power supply same as indicate at the appliances. All power supply should has earth wired.
7. Appliances should place at a stable platform, keep away from children .
8. Power cable is damaged, contact service center to replace a new cable. Do not replace it by own.
9. While selecting the features, do not press the button with great force, it will damage the button and control panel.
10. Any faulty operation, must switch off power and unplug the power supply. Do not unplug while your hand is wet, it will get electric shock.
11. Do not pull the line along sharp object / sharp edges, crimp the wire or let it hang down. Also put away from hot and wet condition.
12. Do not insert any metal object into to the heat dissipation holes / gaps, otherwise it would cause electric shock.
13. Do not place the product on the surface or beside extreme heat condition, such as oven etc.
14. It is forbidden to use this product on an unstable / inclined platform to avoid accident such as injury or fire cause by products falling over.
15. Keep away from children or in-experienced person to operate this product.

16. While in process, it is normal that the pot body is always hot when pouring water out, please lift the pot by holding the handle. Do not touch the pot body with bare hands, otherwise will get hurt easily.
17. Please keep the surface of the heating plate clean. After use it for a period of time, please clean the dirt on the surface of the heating plate.
18. The product will generate steam when it is working. It is easy to cause burns from the steam port. Please be careful while using it.
19. Be careful to let liquid to flow into the product during cleaning, and to avoid danger do not allow the power cord, plug, main body, etc. to dip in the water.
20. If the product is dry burning, please add water to the pot or unplug the power supply. At this time, do not touch the heater with your hands to avoid scalding.
21. After use, there is residual heat in the body and heating plate. Be careful of scalding.
22. Please keep the surface of the heating plate clean. After using for a period of time, the dirt on the surface of the heating plate and the scale on the inner wall of the pot must be cleaned in time.

This product is only suitable for household use.

Product Review



Notice: This picture is for reference only, assemblies maybe different from the picture.

Function Characteristics

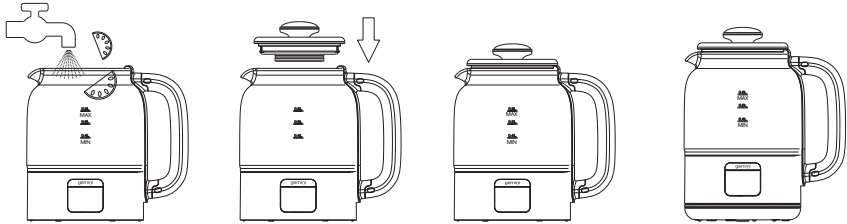
1. It is controlled by microcomputer to achieve precise temperature control.
2. 5 default programs: preset, water boiling, scented tea, stewing and keep warm.
3. 9.5hours preset timing and 5mins kettle-lift power down memory.
4. Use SUS304 stainless steel heating plate for boiling. When the water is boiled rapidly, the power will be halved, so as to save electricity.
5. The separated structure design can be rotated within 360° for placement and use.
6. With dry boil protection and auto cut off after overheating functions.

Guideline for Use

After the first usage, if spots appear on the heating plate, it is incrustation, which is a normal phenomenon. It can be removed by referring to the "Maintenance".

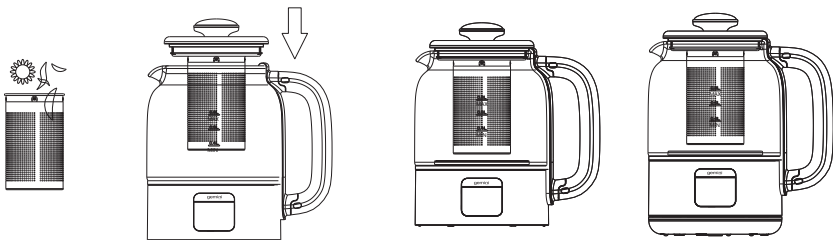
Food boiling

Prepare food ingredients and put them in the kettle body. Fill an appropriate amount of water (do not exceed the maximum water level), then close the kettle lid and put the kettle on the base with insert the plug, then select the required function, the product will start working.



Use of filter mesh

Prepare food ingredients and put them in the filter mesh. Fill an appropriate amount of water into the kettle body (do not exceed the maximum water level), then put the filter mesh into the kettle and close the lid. Put the kettle body on the base with insert the plug, then select the required function, the product will start working.



Operation Method

Operation steps



- ① In the standby mode, press the "Preset/Timing" button to set the required preset time. If there is no need to set the preset time, please skip this step.
- ② In the standby mode or after setting the preset time, press the "function/cancel" button to select the required function.
- ③ After selecting the required function, press the "Preset/Timing" button to adjust the required working time. If there is no need to adjust the working time, please skip this step.
- ④ After setting the function, the product will start working after 5 seconds automatically.
- ⑤ When the operation is completed, there is a sound indication and turn to keep warm automatically.

Kindly reminder:

1. When boiling some frothy soups or desserts, the kettle lid can be opened after the water is boiled to prevent overflow. In case of any overflow, please reduce the amount of water or food ingredients in the kettle body next time.
2. When boiling peanuts, tremella and various beans, please soak them 2 hours in advance.
3. Please unplug when operation is completed. In the standby mode, the product will consume a small amount of power.

Preset and stewing work

Take the function of appointed stewing as an example: make the preset time at 7 a.m. to start stewing at 10 a.m.

1. Put the cleaned food into the kettle at 7 a.m., add an appropriate amount of water (do not exceed the maximum water level), close the kettle lid, and place the kettle body on the base.
2. Turn on the power, and the operation panel displays "0:00", that is, at the standby mode.
3. Press the "Preset/Timing" button to enter setting of the preset time. At this time, the indicator lamp flashes, and the panel displays 0:30, that is, 30 minutes.



4. Press the "Preset/Timing" button repeatedly to adjust the preset time to 3:00, that is, start working after 3-hour.



Kindly reminder:

If no need to set preset function, please skip the above steps.

5. Press the "Function/Cancel" button to enter setting of function selection, and press the "Function/Cancel" button repeatedly to select the required stewing function. At this time, the preset indicator lamp is on, the stewing indicator lamp starts flashing, and the panel displays 1:30.



6. Press the "appointment/timing" button to enter setting of the working time, select the required work time as 2:00 through the "appointment/timing" button, and the nixie tube displays the set working time.



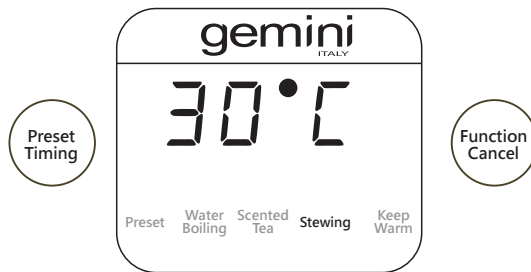
Kindly reminder:

The heating time is set for each function according to the food ingredient. It is not recommended to change the working time for the first boiling. Only after the first boiling, adjustment can be made according to the food ingredient and the taste.

7. After setting the function, wait for 5 seconds without operation, the product will start the preset work, and the panel will display the preset time in a countdown mode.



8. The preset time is ended at 0 o'clock, and the product will start operation. At this time, the indicator lamp is off, and the panel displays the water temperature. When the water temperature reaches the boiling point, the work countdown time will be displayed.



9. When the work is completed, the product sends a "beeping" sound, the stewing indicator lamp is off, the keep warm indicator lamp is normally on, and the panel displays that the water temperature is above 98°C.



Keep Warm

The keep warm time is 12 hours and cannot be adjusted. The keep warm default temperature is 55°C (adjustable within the range of 40 to 90°C).

After product heating is completed, it will automatically enter the keep-warm mode.

1. Directly keep warm

After turning on the power supply, press the "Function/Cancel" button to select the keep warm function, and repeatedly press the "Preset/Timing" button to select the required keep warm temperature. It will start keeping warm after waiting for 5 seconds without operation.

Kindly reminder: when only the keep warm function is selected, the water cannot be boiled, and it will start keeping warm according to the set temperature after reaching the set temperature.

2. Set the keep-warm temperature after work

After entering work and keep warm, press the "Preset/Timing" button to select the required keep-warm temperature, wait 3 seconds without operation, and the product will start operation. When operation is completed, it will enter the corresponding keep-warm temperature.

Other Functions

1. Dry boil protection

When the kettle is dry boil, the product will send a beeping sound, and the panel will display: E00. After adding water to cool down, it will return to the initial standby mode, and the panel will display 0:00.

2. Kettle-lift power down memory

After the kettle body is removed during operation, the product has a function of power down memory, and the panel will be off. If the kettle body is placed back on the base within 5 minutes, it will continue to work with the previously setting.

Function Timetable

Item	Function	Display default	Maximum setting	Minimum setting	Default keep-warm temperature	Maximum capacity (L)
1	Water boiling	-:--	-:--	-:--	55°C	0.8
2	Scented tea	0:05	0:10	0:01	55°C	0.8
3	Stewing	1:30	3:00	12:30	55°C	0.8
4	Keep warm	55°C	90°C	40°C	55°C	0.8

Maintenance

1. After use, please unplug the power socket.
2. All components can be cleaned with detergent and sponge. Please do not use hard steel wire to clean, or might damage the surface.
3. To remove water scale on the pot body, pour 20mL white vinegar on the heating plate to soak for 15 to 20 minutes, and then rinse with water.

4. Do not immerse the whole machine in water. The outer surface of the product can only be wiped with a wet towel. Do not wash with water to avoid electric leakage and malfunction.
5. When using or moving the health kettle, handle with care, and do not move the health kettle when plugged.
6. When the product will not be used for a long time, please clean it, put it in the packing box, and place the box in a ventilated and dry place, so as to avoid being affected with damp. Otherwise, the product performance might be affected.

(I) Remove water scale

Water scale is a calcium deposit that naturally forms when water is heated. It often adheres to the inner wall of the kettle and the heating plate, which will affect the product life of the kettle body and the water quality. Therefore, suggest to clean it regularly.

In normal use, it is generally descaled twice a year (depending on the water quality in different places).

Mix vinegar and water according to the ratio of 1:2 into the kettle body to the "maximum" position, and then start to boil.

Keep the mixture in the kettle body for 24 hours, then pour the mixture away, fill it with clean water to the "maximum" position, and boil.

After the boiled water is poured out, the scale removal work is completed. Finally, clean the inside of the kettle body with water.

(II) Clear tea scale

After use each time, clear the tea leaves in the mesh, add a small amount of water and detergent to the kettle body, use a soft cloth or sponge to scrub the inside of the kettle body, and pour out the water in the kettle body after scrubbing.

If it is difficult to clean the tea scale, you can pour a small amount of the detergent and water to boil again, pour out the boiled water, and rinse the inside of the kettle body with water.

(III) Outer part cleaning

1. If the exterior of the kettle is dirty, you can wipe it with a wet towel and an appropriate amount of detergent. Do not clean the outer surface of the product directly with water.
2. When wiping, do not plug to the power.

Notice:

1. After use, remember to unplug, and clean the body when cooled down.
2. Do not immerse the kettle body or base in water. Use the neutral detergent rather than the corrosive detergent.
3. Do not use thinner, water gasoline, scouring powder, hard brush or stainless steel wire ball to wipe, or might damage the surface.
4. When the product will not used for a long time, please clean it, put it in the packing box, and place the box in a ventilated and dry place, so as to avoid being affected with damp. Otherwise, the product performance might be affected.
5. If there is no water in the kettle, dry boiling shall be prohibited. Otherwise, the product life of the kettle will be reduced.

Frequently Asked Questions

1. No display on the digital screen:
 - a. Power off or not?
 - b. Is the power cord plug inserted into the socket?
 - c. Is the power socket turned off?
2. The food is not cooked:
 - a. Is the set time selected correctly? Is the time adjusted down?
 - b. Too little water in the kettle body?

Remarks:

If the fault still cannot be eliminated after analyzing the above phenomena, please contact the maintenance outlet or the dealer of this company. It is strictly forbidden for non-professionals to disassemble or assemble the machine independently.

Product specifications

MODEL: GMK800

Voltage: 220-240V~

Frequency: 50-60Hz

Power: 600W

Capacity: 0.8L (Max)

Product dimensions: 181(W) x 218(H) x 132(D) mm
(including the pot body and cover)

*** The specifications of related products may vary depending on the batch of accessories or the voltage difference in the actual use area.**

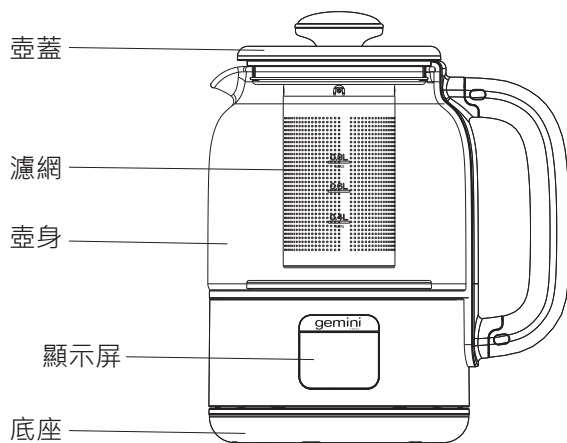
安全指引

1. 請於操作前詳閱操作指引，避免使用不當而造成損壞或危險。
2. 8歲以下兒童、傷健人士、精神及感官受到影響及缺乏操作常識和經驗者不適合獨立操作此產品。如需操作需有相關人士從旁指引及對其行為安全負責。
3. 請遵從本產品上的規格表資料連接電源。
4. 本產品只適用於家居室內操作，並不適用於商業用途及不要在濕度高的室內使用。
5. 使用前請確保插座的接地有效，同時請確認輸入電壓為220-240V~50-60Hz。
6. 如果電源線損壞，請聯絡維修部來更換。
7. 操作按鍵時不可用力過猛，以防按鍵損壞。
8. 在使用過程中，若發生問題時，請先將電源插頭從插座上拔下；請勿濕手拔/插插頭，以免觸電。
9. 請勿以尖端物或鋒利邊沿來壓住電線或讓它懸垂下來，同時要遠離熱源和濕透地方。
10. 不要將金屬等異物插入散熱孔或間隙中，否則可能導致電路損壞。
11. 切勿將本產品放置在帶熱源的表面上或熱源旁，如焗爐。
12. 禁止放置在不平或傾斜的枱面上使用本產品，避免產品容易傾倒引起傷害或火災等事故。
13. 不要在地毯、塑膠凳這些不耐熱的表面或者附近使用，會因蒸氣受損的物體不要放置在本產品上方。
14. 本產品不適用於兒童、精神病患者或缺乏經驗的人使用或玩耍本產品。
15. 產品使用過程中，其鍋身變熱是一種正常現象。當倒水時，只能拿起手柄來提鍋身，切勿用手接觸鍋身的高溫表面，以免燙傷。
16. 請保持機器發熱盤表面清潔，使用一段時間後，需清理發熱盤表面的污垢。
17. 產品使用時，會產生蒸氣從蒸氣口噴出，這容易引起燙傷，請務必小心。
18. 清洗時請勿讓液體流入產品內部，也不可將電源線、插頭、整機等浸入液體裏，以免發生危險。
19. 若產品出現乾燒情況，請往壺內加水或拔掉電源，此時切勿用手觸摸發熱零件以免燙傷。
20. 使用後壺身與發熱盤會有餘熱，小心燙傷。

21.請保持發熱盤表面清潔，使用一段時間後，必須及時清理發熱盤表面的污垢及壺身內壁水垢。

此產品只適合家庭用途。

部件示意圖



注意：如產品圖片與實物略有不同，請以實物為準。

功能特點

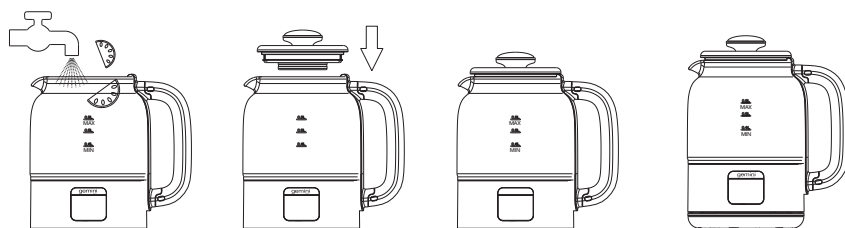
1. 微電腦控制，精準控溫。
2. 具有預約、煲水、花茶、燉煮、保溫五大功能。
3. 具有9.5小時的預約功能，5分鐘的提壺掉電記憶。
4. 採用SUS304不銹鋼發熱盤發熱，水快速燒開後功率減半，達到省電效果。
5. 產品採用分離式結構設計，360°旋轉放置均可使用。
6. 具有防乾燒、過熱斷電保護功能。

使用指引

初次使用後，如發熱盤上出現斑點，此為水垢，屬正常現象，可參照《保養和維護》中的方法進行除垢。

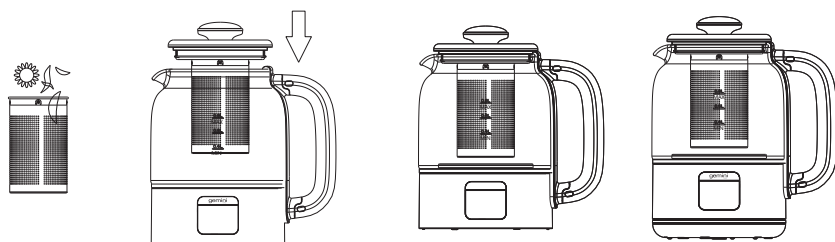
水煮食物

將食材清洗乾淨後放入壺身內，加入適量的水（最多不超過最大水位線），蓋上壺蓋後將壺身放到底座上，插上插頭後選擇所需功能，產品開始加熱工作。



使用濾網

將食材清洗乾淨後放入濾網中，往壺身內加入適量的水（最多不超過最大水位線），將濾網放入壺中並蓋上蓋子，再將壺身放到底座上，插上插頭後選擇所需功能，產品開始加熱工作。



操作方法

(一) 操作步驟

操作面板示意圖



- ①待機狀態下，按下“預約/定時”鍵，可以設置所需要的預約時間，如無需設置預約時間，請跳過該步驟；
- ②待機狀態或者設置好預約時間後，按下“功能/取消”鍵，可以選擇所需要的功能；
- ③選擇好所需要的功能後，按下“預約/定時”鍵，可以調整所需要的工作時間，如無需調整工作時間，請跳過該步驟；
- ④設置好功能後，等待5秒無操作，產品將自動進入工作；
- ⑤工作完成後，產品發出工作完成指示音，自動進入保溫。

溫馨提示：

- 1、煮易發泡的湯或甜品時，水開後可把壺蓋打開防止溢出。如有溢出現象，下次使用時請減少壺身內的水量或者食材數量。
- 2、煮花生、銀耳及各類豆類食材時，請提前泡發2小時。
- 3、工作完成後請拔掉插頭，待機狀態下，產品會有少量耗電。

(二) 預約及燉煮工作

以預約燉煮功能為例：早上7時預約上午10時開始燉煮食物。

- 1、早上7點將洗乾淨的食物放入壺中，加入適量的水（不超過最大水位線），蓋上壺蓋後將壺身放置到底座上；
- 2、接通電源，操作面板顯示“0：00”即為待機狀態；
- 3、按下“預約/定時”鍵，進入預約時間的設置，此時預約指示燈閃亮顯示，顯示屏常亮顯示0:30，即30分鐘；



- 4、反覆按下“預約/定時”鍵，將預約時間調整為3:00，即預約3小時後開始工作；



溫馨提示：

如果不需要預約工作，請跳過以上設置預約時間的步驟。

- 5、按下“功能/取消”鍵，進入到功能選擇的設置，反覆按下“功能/取消”鍵，選擇所需要的燉煮功能，此時預約指示燈變成常亮顯示，燉煮指示燈開始閃亮顯示，顯示屏常亮顯示1:30；



- 6、按下“預約/定時”鍵，可以進入到工作時間的設置，通過“預約/定時”鍵選擇所需的工作時間為2:00，此時顯示屏顯示設置的工作時間；



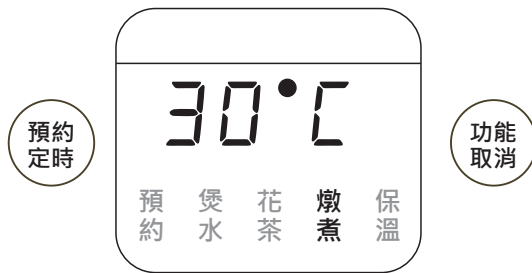
溫馨提示：

每個功能都按常用的食材設定好的加熱時間，第一次煮不建議更改工作時間，只有第一次煮過後，根據食材和本人的口味要求作調整。

- 7、設置好功能後等待5秒無操作，產品將開始預約工作，此時顯示屏倒計時顯示預約時間；



8、到10時預約的時間，產品開始加熱工作，此時預約指示燈熄滅，顯示屏顯示水溫，待水溫到達沸點後會顯示工作倒數時間；



9、當工作完成後，產品發出“滴滴...”的響聲，燉煮指示燈熄滅，保溫指示燈常亮顯示，顯示屏顯示水溫98°C以上。



保溫

產品的保溫時間為12小時，不可調整，保溫溫度默認為55°C（40-90°C範圍內可調）。

產品加熱工作完成後，會自動進入保溫狀態。

1、直接保溫

接通電源後，按下“功能/取消”鍵選擇保溫功能，反覆按下“預約/定時”鍵，可以選擇所需要的保溫溫度，等待5秒沒有操作則進入保溫工作。

溫馨提示：只選擇保溫功能，不選其他功能時，水不能煮沸，加熱到設定溫度就按設定溫度進行保溫。

2、設置工作後的保溫溫度

在進入工作和保溫後，按下“預約/定時”鍵選擇所需保溫溫度，等待3秒沒有操作，產品將進入加熱工作，待工作完成後則進入對應的保溫溫度。

其他功能

1、乾燒狀態

當壺中的水被燒乾時，產品會發出滴滴.....響聲，顯示屏顯示為：E00，加水冷卻之後才會回到初始待機狀態，顯示屏顯示為0：00。

2、提壺掉電記憶

工作過程中壺身離開後，產品具有掉電記憶功能，顯示屏熄滅，在5分鐘內把壺身放回到底座，可以按之前設定的狀態繼續工作。

功能時間表

序號	功能	顯示默認	最大設置	最小設置	保默認保溫溫度	最大容量(升)
1	煲水	-:--	-:--	-:--	55°C	0.8
2	花茶	0:05	0:10	0:01	55°C	0.8
3	燉煮	1:30	3:00	12:30	55°C	0.8
4	保溫	55°C	90°C	40°C	55°C	0.8

保養和維護

- 1、使用完畢後，請及時從電源插座上拔下插頭。
- 2、各部件可用洗潔精和海綿清洗，請勿使用硬質鋼絲清洗，以免破壞表面。
- 3、壺身水垢的清除方法，倒入20毫升的白醋在壺身內浸泡15到20分鐘，再用清水沖洗即可。
- 4、切勿將主機浸入水中，產品外表面僅可用濕毛巾擦拭，不得用水清洗，以免發生漏電及發生故障。
- 5、使用或移動養生壺時，需輕拿輕放，嚴禁帶電移動養生壺。
- 6、產品長時間不使用時，請清潔乾淨，裝入包裝箱中，置於通風乾燥的地方，以免受潮，影響使用。

(一) 清除水垢

水垢是水加熱時自然形成的鈣質沉澱物，它常粘附在壺內壁及發熱盤上，會影響壺身的使用壽命及水的品質，所以應定期清除；

正常使用中，一般一年除垢兩次(根據各地水質不同而定)；

用醋和水按照1：2的比例混合裝入壺身到"最大"位置，然後加熱煮沸；

讓混合液在壺身中保存24小時之後將混合液倒掉，再裝入清水到"最大"位置，使壺身重新加熱煮沸一遍；

倒掉這些沸水後，才算完成水垢清除工作，最後用清水清洗壺身內部。

(二) 清除茶垢

每次使用完後要把濾兜內的茶渣清除乾淨，往壺身內加入少量的清水和清潔劑，用柔軟的布或海綿擦洗壺身內部，擦洗乾淨後倒掉壺身內的水。

若茶垢較難清潔，可以倒入少量配備的除垢劑和清水，使壺身重新加熱煮沸一遍，倒掉沸水後使用清水沖洗壺身內部。

(三) 外觀清潔

1. 水壺外部髒汙，可以用濕毛巾和適量清潔劑擦拭，不可用水直接清洗產品外表面；

2. 擦拭時，切勿插上電源插頭。

注意:

1. 使用完畢後，必須拔下電源插頭，然後待機體冷卻後才開始清洗。

2. 切勿將壺身或底座浸入水中，不能用腐蝕性清潔劑，應用中性的清潔劑。

3. 不要用天那水、汽油、去污粉、硬質刷或不銹鋼絲球等來擦拭，以免破壞表面。

4. 產品長時間不使用時，請清潔擦淨，裝入包裝箱中，放於通風和乾燥的地方，以免受潮，影響使用。

5. 如果壺中沒有水，請不要乾燒，否則產品會降低使用壽命。

常見問題

- 1 · 顯示屏無顯示：
 - a · 是否停電？
 - b · 電源線插頭是否插入插座中？
 - c · 電源插座是否處於關閉狀態？

- 2 · 食物沒有熟：
 - a · 設定的時間是否選擇正確，時間是否調小了？
 - b · 壺身內加的水是否太少？

備註：

經以上現象分析後仍無法排除故障，請與本公司維修點或經銷商聯繫，嚴禁非專業人員對本機自行拆裝。

產品規格

型號：GMK800

電壓：220-240V ~

頻率：50-60Hz

功率：600W

容量：0.8 公升 (最大)

產品尺寸: 181(W) x 218(H) x 132(D) mm (含鍋身及蓋)

*相關產品的規格，可能會因配件批次或實際使用地區的電壓差異而有所不同。

請記錄下列產品資料

● 型號

● 機身編號

● 經銷商名稱

● 購買日期

本產品不斷改進中，如功能有所更改，恕不另行通知，如有疑問，請與客戶服務中心聯絡，不便之處，敬請原諒。

說明書內容以英文版本為準

ToolBox Customer Service Centre 客戶服務中心：
4/F, DCH Building, 20 Kai Cheung Road, Kowloon Bay, Hong Kong
香港九龍灣啓祥道20號大昌行集團大廈4樓

Customer Service Hotline 客戶服務熱線：(852) 8210 8210

Service E-mail 電郵地址：8210service@gilman-group.com

Please register now at 請即上網登記：www.toolbox.hk

Website 網址：www.gilman-group.com

Proudly Serviced by:



太平家庭電器