

**gemini**  
ITALY

Mini Multi-function

Healthy Kettle

四季智能迷你養生壺

Model NO. /型號: GMK600P

600W

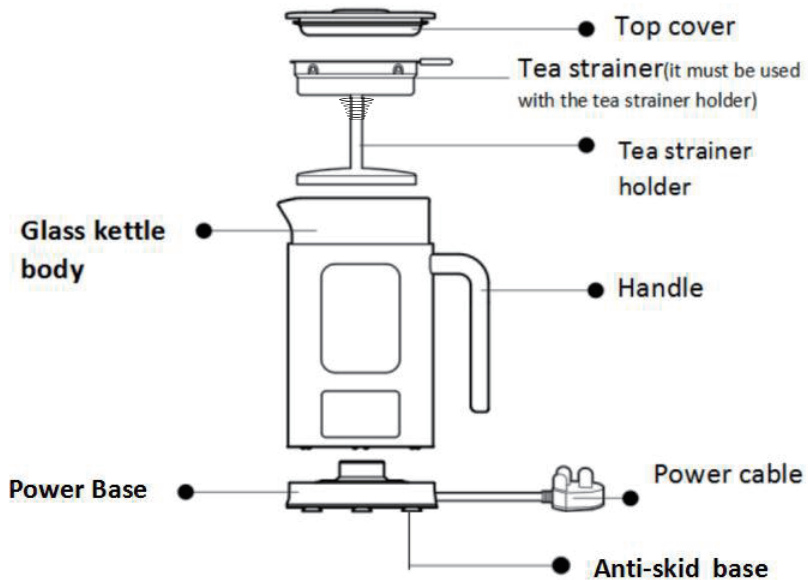
Before using your product for first time, please read this instruction manual carefully.  
在使用本產品前，請仔細閱讀本說明書並保存好。

## Safety Precautions

1. The kettle complies with electric appliances' technical certification rules and the related safety laws and regulations.
2. Before use, inspect and make sure the local voltage( AC 220-240V~,50/60Hz) match with the rated voltage on the nameplate.
3. For personal safety, please use a correctly grounded socket.
4. When in use, put the kettle on a stable and secure platform and keep it out of reach of children.
5. Inspect the plug and the power cable comprehensively and carefully and, if damaged, have them repaired or replaced by professionals.
6. Do not use the kettle on (or close to) carpet, plastics or any other material not resistant to heat. Do not put any object likely to be affected by steam on the kettle.
7. Beware of burn by the plentiful steam coming out of the spout.
8. Keep the base surface clean. After use for some time, remove the dirt or water on the base surface.
9. For safety, do not immerse the kettle body into water or allow any liquid to flow into its interior or base.
10. If the power cable is damaged, have it replaced by a professional of the repair department of the manufacturer.
11. Do not use the kettle when there is no water in it, otherwise its life will be shortened.
12. When the kettle is boiling water, make sure it is watched and keep children away from it, particularly, make sure no child plays with the power cable.
13. To avoid electric shocks due to damage of the kettle, do not immerse the kettle or its power cable, plug or base into water or any other liquid.
14. If the kettle body, the base or any other part is damaged, stop using the kettle immediately and contact our after-sales service department.
15. When add water into the kettle, make sure the water in it is not higher than the maximum water level sign, i.e. the 600ml mark, otherwise boiling water will overflow.

16. When in use, do not touch the kettle with hands, otherwise you might be scalded.
17. The kettle body and the base should be products produced by us only.
18. When in use, make sure the power socket has good contact and do not use any extension cable.
19. To avoid dangers such as short circuit or electric shocks, do not pull the power cable forcedly but hold the plug when the power cable is unplugged.
20. To avoid dangers such as short circuit or electric shocks, do not plug or unplug the power cable with wet hands.
21. To avoid dangers such as electric leakage or fires, do not dismantle, repair or modified the kettle by yourself but have the work done by professionals.
22. Do not remove the top cover when the water in the kettle is boiling.
23. Use the kettle on the base delivered with the kettle only.
24. Use the kettle at home only. Do not use it outdoors.
25. Do not use the kettle for other non-household purposes.
26. The kettle can be used by children of 8 or above. When people with disability, impaired sensory intelligence or inadequate experience or knowledge use the product, they should be watched or guided in terms of safe use of the kettle and know the related dangers.
27. Adults should tell children not to play with the kettle.
28. Inspect the power cable at regular intervals. If it is damaged, it must be replaced by our after-sales service department or qualified electrician.

## Product Description



Remarks: The picture is for reference only.

Program parameters for each functions					
Function	Default Operation Time	Heating temperature	Default Auto-keep warm temperature	Adjustable operation Time	Temperature range for "Keep Warm" function
Flower Tea	20 min.	100°C	60°C	15-60 min.	30 - 90°C
Ginseng Tea	10 min.	100°C	60°C	5-30 min.	30 - 90°C
Healthy Soup	30 min.	100°C	60°C	15-60 min.	30 - 90°C
Brew Tea	7 min.	100°C	60°C	5-60 min.	30 - 90°C
Boil Water	/	100°C	60°C	/	30 - 90°C
Keep Warm	24 hours	60°C	60°C	/	30 - 90°C

Note: The default operation time of each function program is to start calculation after the water is boiled.

**Notes:**

1. When making a foamy tea, please lift the top cover.
2. Different teas may have different weights, so it is difficult to set a single standard for the water level in tea making. In principle, total volume of the tea and the water should not be higher than the maximum mark, i.e. 600 ml. Particularly, there is white foam when making ginseng tea, so do not add water to 600ml mark but to 400ml only.
3. The kettle is designed with dry boil protection. This function will not apply if the water less than 200 ml. When kettle is without water, the kettle will stop operation and start the dry boil protect function.
4. If the soup base or tea is pasty or sugar contained, there might be an overcooking sign at bottom of the kettle after heating. Therefore, do not leave the kettle when making tea or cooking soup. If overcooking is found, stop the kettle and clean the overcooked soup base or tea immediately after the kettle has cooled down.
5. If any seasoning (such as sugar or salt) needs to be added into any soup, add it into the container bowl with the soup poured into it after the program is finished. Do not add it into the kettle directly for heating to extend the life of this product.
6. Due to the difference water quality, the scale at the bottom of the kettle is a normal phenomenon.
7. There is 24 hours auto-Keep Warm function at default keep warm temperature 60°C after each program completed. The display temperature fluctuates with the change of water temperature and environment at ( $\pm 3$  °C).
8. After brew tea, there will be tea stains at the bottom of the kettle. It should be cleaned in time. Otherwise, it will be hard to clean after the stains accumulate for a long time and shorten the product service life.

# Instructions for use

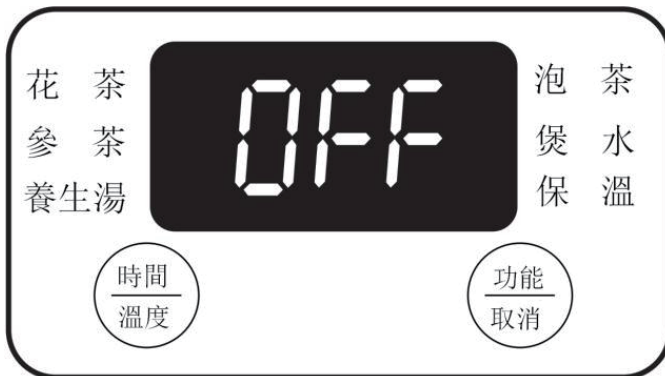
## I. Boil Water

1



Add water into the kettle and make sure the water in it is between the lowest mark(200ml) and the highest mark(600ml) (for purpose of no overflow via the spout during water boiling). Fit the top cover and connect the kettle body and the base. (During water boiling, the tea strainer and the tea strainer holder are not expected to be in the kettle.)

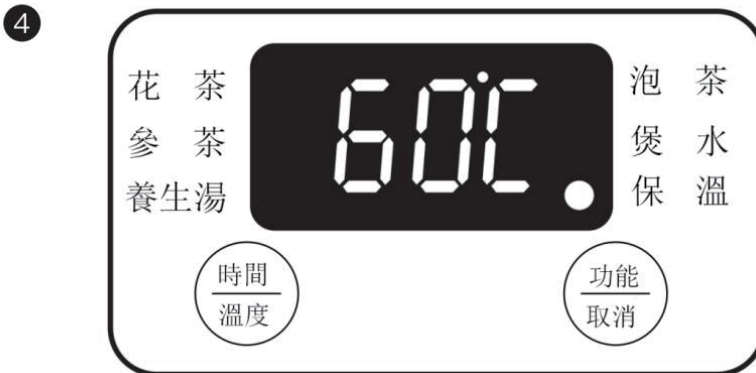
2



After the plug is inserted into the power socket, “OFF” will appear on the display screen and there will be a “BEEP”, which suggests that the product is standby.

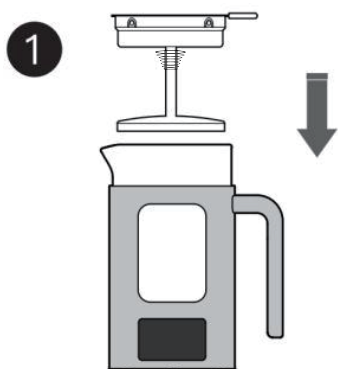


Press “Function/Cancel” gently with a hand and choose the “Boil water” program. The program indicator will then flicker. Five seconds later, the kettle will begin to work automatically and the “Boil water” program indicator will remain lit. After the water has boiled, the kettle will sound a “Beep” then keep the water in warm.



The “Keep Warm” program indicator will remain lit. The default duration of keeping the water warm is 24 hours following end of the previous program and the default warm water temperature is 60 °C .Or you can press “Timer/Temperature” gently to adjust the temperature between 30°C and 90°C : Short press the button to increase by 1 °C each press, or long press it to increase by 5 °C each press. The adjustment can be cyclic.

## II. Brew Tea



Put both the tea strainer and the tea strainer holder into the kettle body.

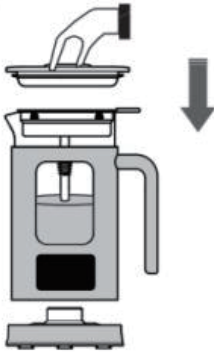


Add water into the kettle and make sure the clear water in it is between the lowest mark(200ml) and the highest mark(600ml).

Use the tea leave about 5-10g and distribute on the tea strainer evenly. (The data above are for reference only.)

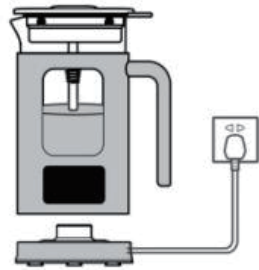


3

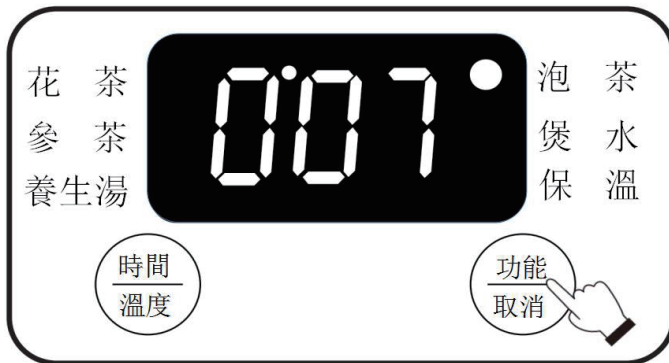


Fit the top cover firmly and put the kettle body onto the power base.

4



Insert the plug into the power socket and choose “Brew Tea” to start the kettle.

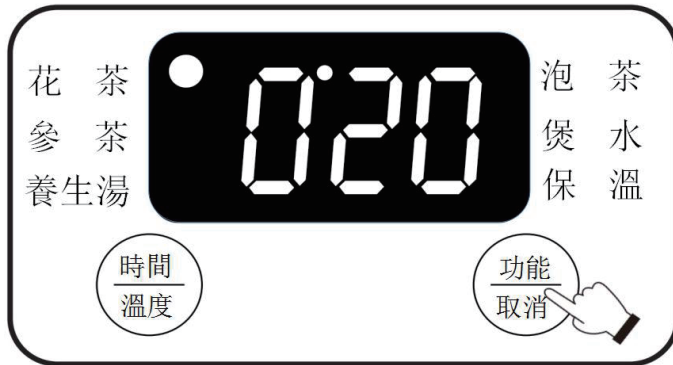


Press “Function/Cancel” gently and choose the “Brew Tea” program. The program indicator will flicker. The default time is 7 minutes and the default operation temperature is 100 °C and cannot be adjusted. Press “Timer/Temperature” gently to adjust the operation time of heating (5-60 minutes): short press the button to increase by 5 minutes each press, or long press it to increase by 10 minutes each press. The adjustment can be cyclic.

Five seconds later, the kettle will begin to work automatically and the “Brew Tea” program indicator will remain lit. Upon end of the program, the kettle will sound a “Beep” and keep the tea in warm for 24 hours automatically at default auto keep warm temperature 60 °C and it can be adjusted between 30 °C -90 °C according your needs .

### III、Flower Tea

1

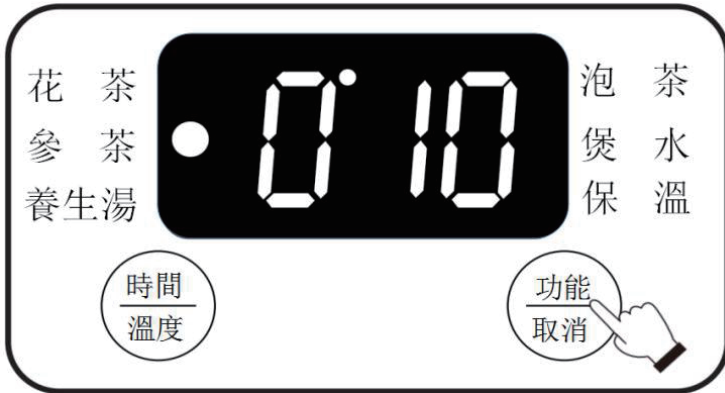


After the power is turned on, the display shows the OFF and enters standby mode. Press “Function/Cancel” gently and choose the “Flower Tea” program. The program indicator will flicker. Five seconds later, the kettle will begin to work automatically and the default operation time of the program will appear on the display screen. Press “Timer/Temperature” gently to adjust the duration (15-60 minutes): short press the button to increase by 5 minutes each press, or long press it to increase by 10 minutes each press. The adjustment can be cyclic. Upon end of the program, the kettle will sound a “Beep” and keep the tea in warm of 24 hours at default auto keep warm temperature 60 °C and it can be adjusted between 30°C-90°C according your needs .

Reminder: The minimum water level is 200ml and the maximum water level is 600ml. (The data above are for reference only.)

## IV. Ginseng Tea

1



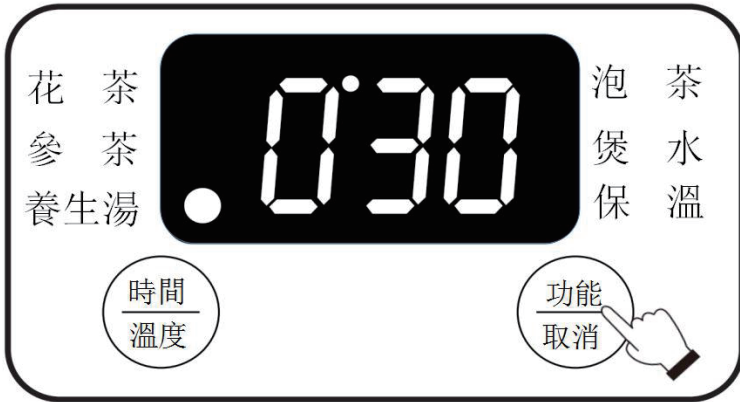
After the power is turned on, the display shows the OFF and enters standby mode. Press “Function/Cancel” gently and choose the “Ginseng Tea” program. The program indicator will flicker. Five seconds later, the kettle will begin to work automatically and the default operation time of the program will appear on the display screen. Press “Timer/Temperature” gently to adjust the duration (5-30 minutes): short press the button to increase by 5 minutes each press, or long press it to increase by 10 minutes each press. The adjustment can be cyclic. Upon end of the program, the kettle will sound a “Beep” and keep the tea in warm of 24 hours at default auto keep warm temperature 60 °C and it can be adjusted between 30°C-90°C according your needs .

Reminder: 1.The minimum water level is 200ml and the maximum water level is 400ml. (The data above are for reference only.)

2.The ginseng slides could use about 5g to 10g, and there will be white foam floating, the water volume can not be increased to a maximum capacity of 600ml, only water can be added to 400ml, otherwise the water will overflow when boiling.

## V. Healthy Soup

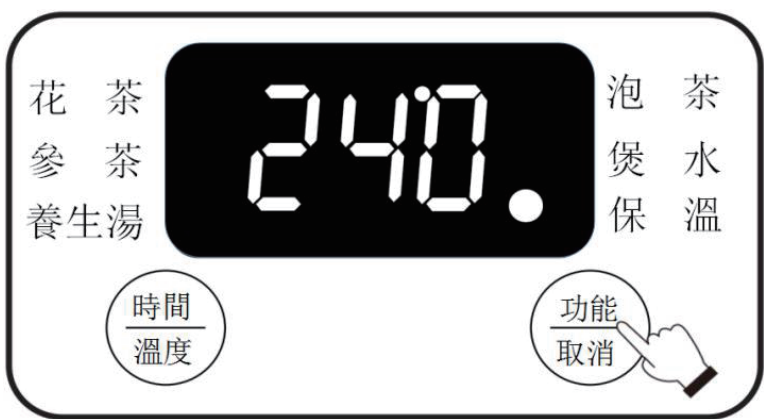
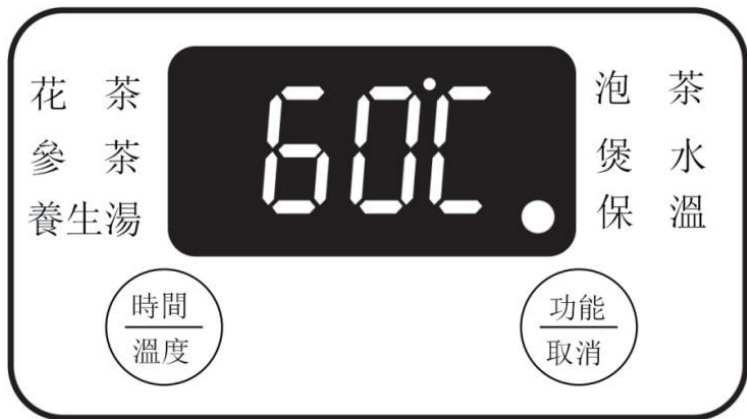
1



After the power is turned on, the display shows the OFF and enters standby mode. Press “Function/Cancel” gently and choose the “Healthy Soup” program. The program indicator will flicker. Five seconds later, the kettle will begin to work automatically and the default operation time of the program will appear on the display screen. Press “Timer/Temperature” gently to adjust the duration (15-60 minutes): short press the button to increase by 5 minutes each press, or long press it to increase by 10 minutes each press. The adjustment can be cyclic. Upon end of the program, the kettle will sound a “Beep” and keep the soup in warm of 24 hours at default auto keep warm temperature 60°C and it can be adjusted between 30°C-90°C according your needs .

Reminder: The minimum water level is 200ml (just over the soup base) and the maximum water level is 500ml. If it exceeds 500ml, boiling water will spurt out and cause burns. (The data above are for reference only.)

2



The “Keep Warm” program indicator will remain lit. The default duration of keeping the soup warm is 24 hours and the default warm water temperature is 60 °C . It shows that the temperature fluctuates with the change of water temperature and environment at ( ± 3 °C ). You can press “Timer/Temperature” gently to adjust the temperature between 30°C and 90°C. Short press the button to increase by 1 °C each press, or long press it to increase by 5 °C each press. The adjustment can be cyclic. After keeping warm for 24 hours, it will count down until it finishes issuing a “beep” tone and then enters the off standby state.

## **IV. Additional Functions**

1. Function of memory after short-time removal of kettle: If the kettle is removed from its power base for about 1 minute and then put back to its base during use, it will continue to execute the unfinished program.
2. Function of power off memory: If the kettle is unplugged for about 1 minute and then plugged again during use, it will continue to execute the unfinished program.
3. If the kettle is operating without water, or if it is overheated because the ingredients in it is overcooked, it will detect it and power off automatically and display nothing on its display screen. After the temperature in the kettle has declined or cold water has been added into it, "OFF" will appear on the display screen. Remember that there will be sticky bottoms or a have a burnt scent when the bottom of the kettle is heated, it needs to be cleaned that continue to use.
4. When the NTC sensor has detected overheating, "E2" will appear on the display screen and it needs to wait for the temperature to drop before it can be used normally. When NTC has an open circuit, "E3" will appear on the display screen. Please contact our after-sales service department for inspection and maintenance. ("E2" and "E3" both suggest a fault).

## **VII. Cleaning and Maintenance**

1. Please keep the power base surface clean. After use for some time, remove the dirt or water on the base surface.
2. For safety, do not immerse the kettle body into water or allow any liquid to flow into its interior or base.
3. Do not start any operation, heating and boiling when there is no water in it, otherwise the product life will be shortened.
4. To avoid electric shocks due to damage of the kettle, do not immerse the kettle or its power cable, plug or power base into water or any other liquid.
5. Use the kettle on the power base delivered with the kettle only.

## Product Specifications

Model No.: GMK600P

Power: 600W

Voltage frequency: 220-240V~50/60Hz

Maximum capacity: 600ml

Product dimension: 150(W)x211(H)x106(D) mm (with power base)

\*The final product specification may be varied according to a different lot of material and actual input voltage power of the usage area.

## 安全注意事項

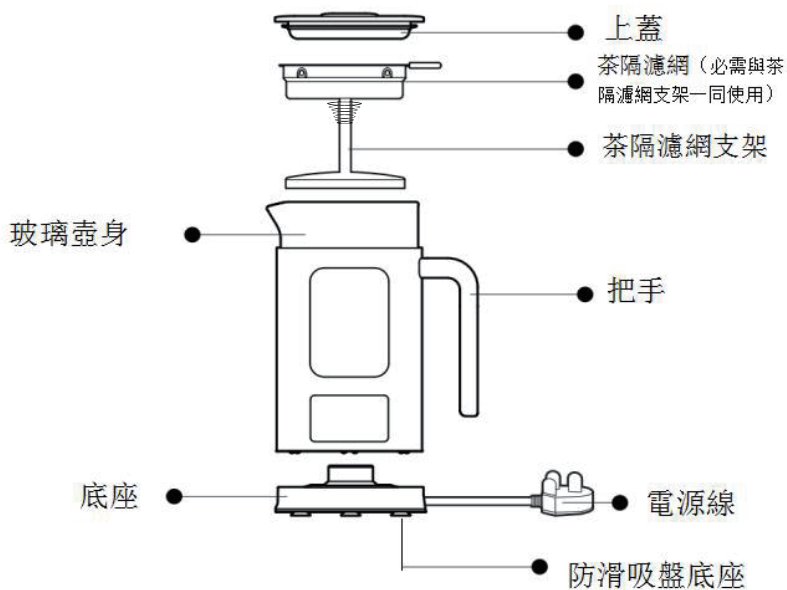
1. 本產品符合電器產品技術認證守則和相關安全法規。
2. 使用前應檢查產品銘牌所標額定電壓是否與本地使用的電壓 AC 220-240V~,50/60Hz 一致。
3. 請使用有接地保護的地線插座，以確保人身安全。
4. 使用本產品時應放置於穩固平臺上，並放置在兒童觸摸不到的地方。
5. 要對插頭及電源線進行仔細的全面檢查，如發現有損壞現象，請由專業人士維修或更換。
6. 不要在地毯及塑膠等不耐熱的物體表面（或其附近）使用本產品，容易受蒸汽影響的物品不要置於本產品上方。
7. 產品使用時會產生大量蒸汽從壺口噴出，小心被蒸汽燙傷。
8. 請保持本機的底座表面清潔，使用一段時間後，必須及時清理底座表面的污垢或水。
9. 清洗玻璃壺身時請勿浸入水中或讓液體流入產品內部或底座內部，以免發生危險！
10. 如果電源軟線損壞，為了避免危險，必須由製造商,其維修部的專業人員更換。
11. 如果玻璃壺中無水，請不要幹燒操作，否則會影響到產品的使用壽命。
12. 產品在煲水的過程必須有人看管，請不要讓小孩接近，並且不要讓小孩拉扯電源線。
13. 請不要將電源線、插頭及整機或底座等浸入水裏或其他的液體裏面，防

止損壞產品而觸電。

14. 發現壺身，底座或其他部件損壞時，請立刻停止使用，請聯絡我司售後服務部維修。
15. 在往玻璃壺身加水時，不可超過最大水位標誌即 600ml，如果水過 600ml 水位，煲水在沸騰時，水會溢出。
16. 產品在工作過程中，請勿用手去觸摸玻璃壺身，避免被燙傷。
17. 本產品的玻璃壺身及底座不可用其他品牌生產的玻璃壺身及底座替代使用。
18. 使用本產品時，必須確定電源插座接觸良好，不可使用延長線操作本產品。
19. 當拔電源線插頭時，請握住插頭部分，切勿強行拉扯電源線，否則可能會導致觸電或者短路等危險。
20. 請勿用濕手連接及拔電源線，否則可能導致短路或觸電等危險。
21. 除專業維修技術員外，請勿對機器進行自行拆卸、修理、改裝，否則可能導致起火漏電等危險。
22. 當水沸騰時，不要移動壺蓋。
23. 電水壺只可在提供的底座上使用。
24. 本產品只可作家庭用途，不能放置戶外使用。
25. 不可讓本產品作非家庭用途使用。
26. 該電器可適用於 8 歲以上的兒童以及身體、感官或者智力能力下降和缺乏經驗和知識的人群，當他們使用該電器需要得到安全使用電器的監督或者指導，並且瞭解所涉及的危險。
27. 成人應該指導小孩不可把玩此電器。
28. 定期檢查本產品的電源線。如果電源線損壞，必須由本公司售後服務部或合格的電器技師更換，以避免危險。



## 產品說明



備註：產品圖片僅供參考，具體以實物為準。

各功能程式參數					
功能	默認工作時間	預設加熱溫度	自動保溫預設溫度	可調工作時間範圍	保溫功能可調溫度範圍
花茶	20 分鐘	100°C	60°C	15-60 分鐘	30-90°C
參茶	10 分鐘	100°C	60°C	5-30 分鐘	30-90°C
養生湯	30 分鐘	100°C	60°C	15-60 分鐘	30-90°C
泡茶	7 分鐘	100°C	60°C	5-60 分鐘	30-90°C
煲水	/	100°C	60°C	/	30-90°C
保溫	24 小時	60°C	60°C	/	30-90°C

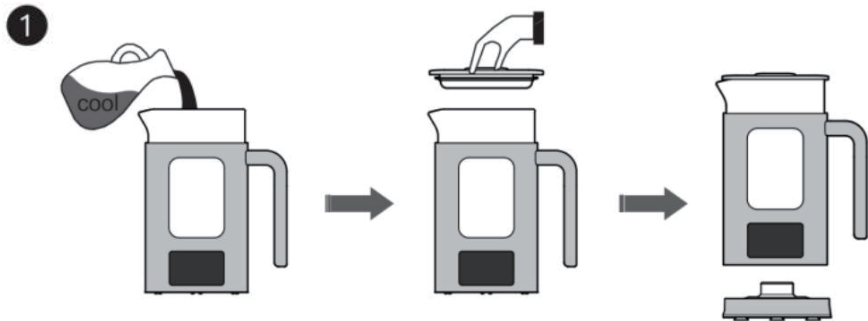
備註：各功能程式的默認工作時間為水為沸騰後開始計算。

注意：

- 1.若煮容易起泡的茶類，請打開上蓋。
- 2.由於茶類的份量不一樣，每個功能水的容量很難有一個標準，原則是茶類和水加起來不能超過最大刻度 600ml。另外煲參茶時會有白泡浮起，水量不可加至最大 600ml 容量，只可加水至 400ml，否則水在沸騰時會溢出。
3. 產品設有幹燒保護功能，少於 200ml 水也不會乾燒，沒有水機子會停止運作并啟動幹燒保護功能。
4. 若湯料/茶類本質為糊狀或有糖份，在加熱後壺底會有燒焦可能，請勿在此過程中離開，若發現燒焦情況需停止繼續操作。待水壺冷卻後，馬上清洗乾淨。
5. 若湯/菜類需加調味（糖/鹽）時，請完成煲滾程式後倒出湯料後再在碗中加入調味，不可直接在水壺內加入任何調味後直接加熱操作，以延長本產品的壽命。
6. 因各地水質有差異，壺底有水垢屬於正常現象。
7. 在保溫程式；設有自動 24 小時預設溫度 60℃ 保溫功能，顯示溫度隨水溫及環境變化有±3℃ 的浮動。
8. 泡茶後壺底會有茶漬/污漬，要及時清洗，否則時間久了污漬積聚後不易清洗及可縮短產品使用壽命。

## 使用指南

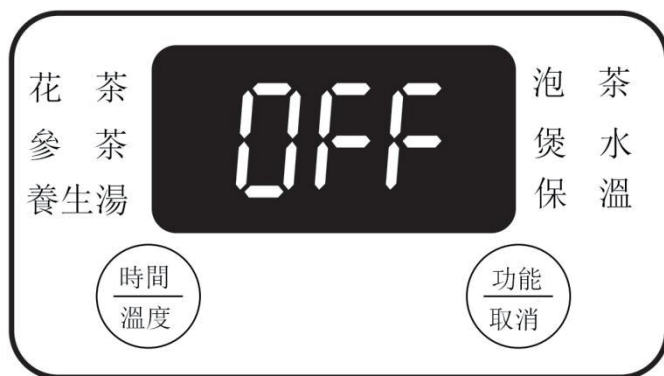
### 一、煲水



往壺內加入適量的水，最小容量不能低於最小刻度線 200ml，最大容量不能

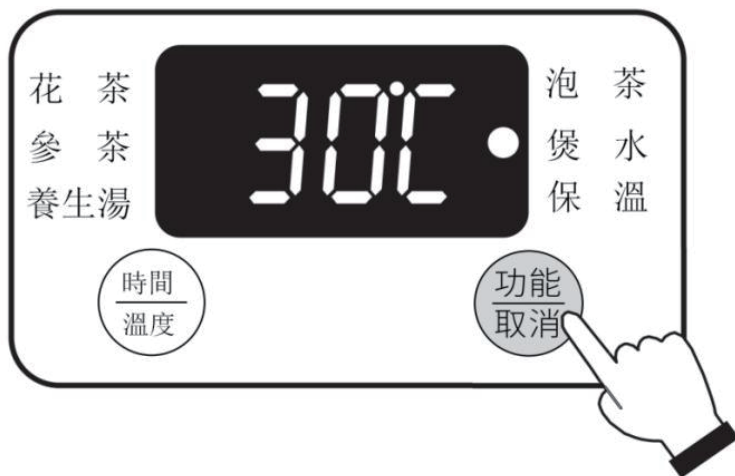
超過最大刻度線 600ml，以免在煲水過程中沸水從壺嘴處溢出；蓋上蓋子，將壺身與底座連接好。（煲水時不要把茶隔及茶隔濾網架放入壺內）

2



把插頭連接電源後，顯示屏顯示 OFF，並發出一聲蜂鳴提示聲，即產品進入待機狀態。

3



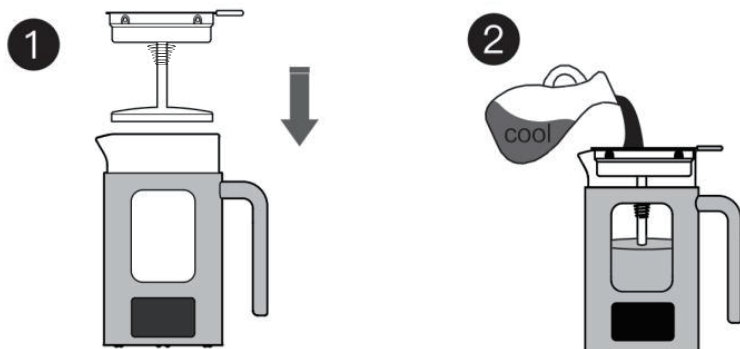
用手輕按“功能/取消”鍵，選擇“煲水”程式，程式指示燈閃亮顯示，5秒鐘後產品自動進入工作狀態，“煲水”程式指示燈長亮顯示；當水煲滾後工作完成，本機“Beep”一聲提示音後進入保溫狀態。

4



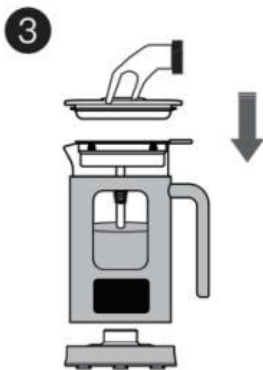
“保溫”程式指示燈長亮；默認保溫時間由完成上一個工作程式開始維持 24 小時，默認保溫溫度 60°C；輕按“時間/溫度”鍵可調節保溫溫度，可調範圍為 30-90°C，每輕按一下以 1°C 遞增，長按以 5°C 遞增，並循環調節。

## 二、泡茶

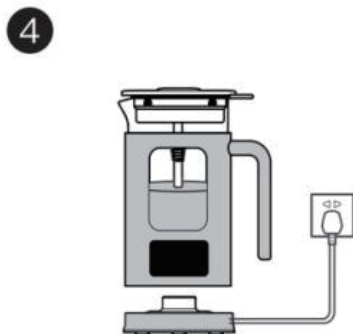


把茶隔及茶隔濾網架一同放入壺身內

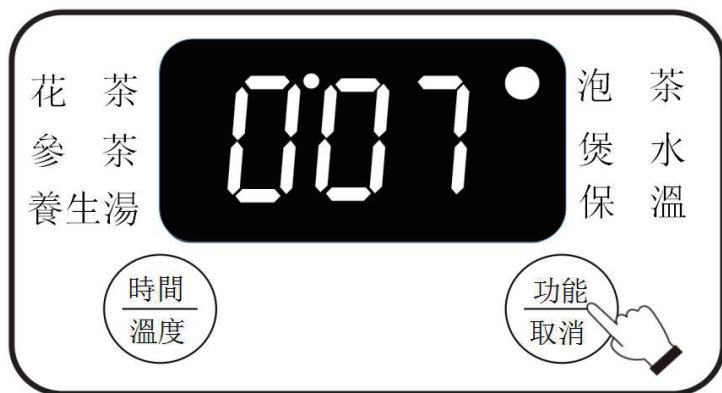
然後往壺內放入適量的清水，最大水量不能超過刻度線 600ml  
然後水量不能少於刻度線 200ml  
提示：茶葉均勻分佈在茶隔濾網上，大約 5-10 克。（以上數據僅供參考）



再蓋緊上蓋及把壺身放在底座上



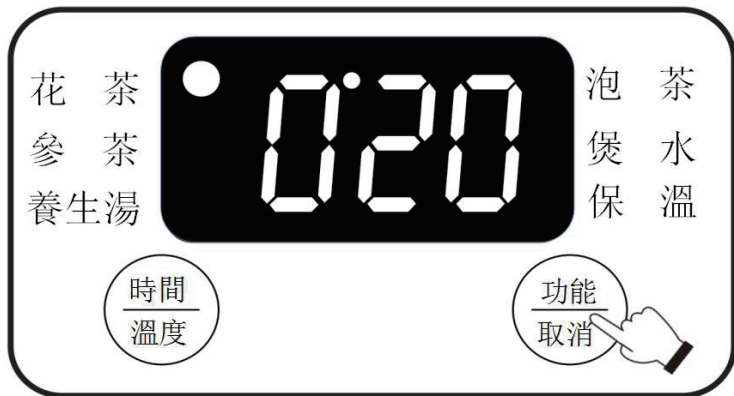
把插頭連接電源後，選擇泡茶功能，開始工作。



輕按“功能/取消”鍵，選擇“泡茶”程式，程式指示燈閃亮顯示。顯示屏會顯示泡茶程式默認時間為 7 分鐘，默認加熱溫度為 100°C，溫度不可調節。再按“時間/溫度”鍵調節所需加熱時間，加熱時間調節範圍 5-60 分鐘，點按以 5 分鐘遞增，長按以 10 分鐘遞增，並循環調節。5 秒後產品自動進入工作狀態，“泡茶”程式指示燈長亮顯示；當工作完成後，產品會發出“Beep”一聲提示音後進入自動 24 小時保溫狀態，預設自動保溫溫度為 60 度，或在可調範圍 30°C-90°C 內自設所需保溫溫度。

### 三、花茶

1

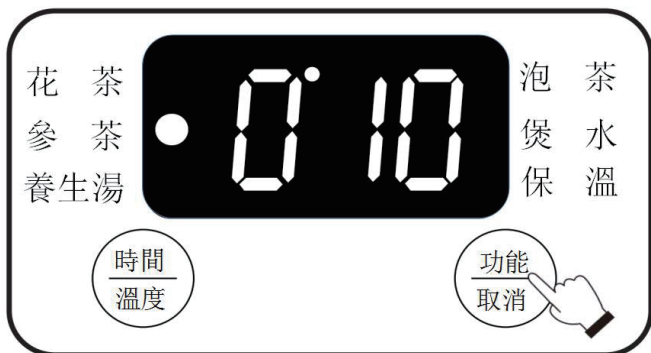


接通電源後，顯示螢幕出現 OFF 字進入待機模式，用手輕按“功能/取消”鍵，選擇“花茶”程式，程式指示燈閃亮顯示，5 秒鐘後產品自動進入工作狀態，螢幕顯示花茶程式默認工作時間，用手輕按“時間/溫度”鍵，可調時間範圍為 15-60 分鐘，點按以 5 分鐘遞增，長按以 10 分鐘遞增，並迴圈調節；當完成工作程式後，本機“Beep”一聲提示音後進入 24 小時保溫狀態，預設自動保溫溫度為 60 度，或在可調範圍 30°C-90°C 內自設所需保溫溫度。

提示：此程序最小水量為 200ml，最大水量為 600ml。（以上數據僅供參考）

## 四、參茶

①

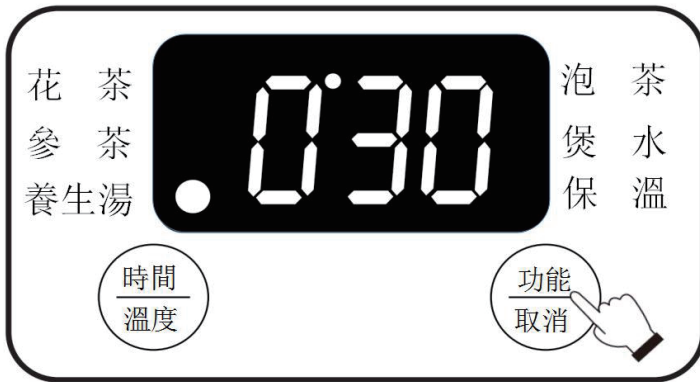


接通電源後，顯示屏幕出現 OFF 字進入待機模式，用手輕按“功能/取消”鍵，選擇“參茶”程式，程式指示燈閃亮顯示，5 秒鐘後產品自動進入工作狀態，屏幕顯示參茶程式默認工作時間，用手輕按“時間/溫度”鍵，可調時間範圍為 5-30 分鐘；點按以 5 分鐘遞增，長按以 10 分鐘遞增，並循環調節。當完成工作程式後，本機“Beep”一聲提示音後進入 24 小時保溫模式，預設自動保溫溫度為 60 度，或在可調範圍 30℃-90℃內自設所需保溫溫度。

提示：1.此程序最小水量為 200ml，最大水量為 400ml。(以上數據僅供參考)  
2.另外煲參茶時（約 5-10 克）會有白泡浮起，水量不可加至最大 600ml 容量，只可加水至 400ml，否則水在沸騰時會溢出。

## 五、養生湯

1

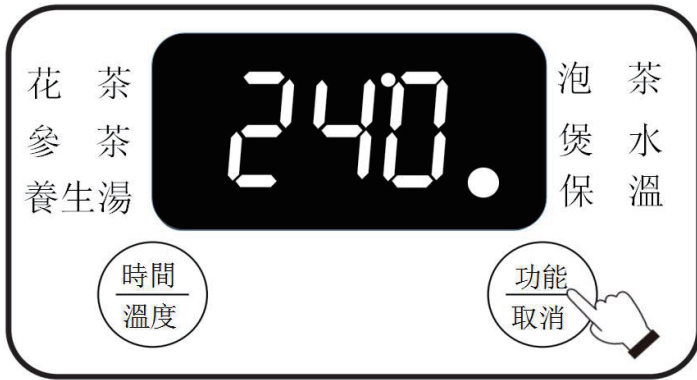
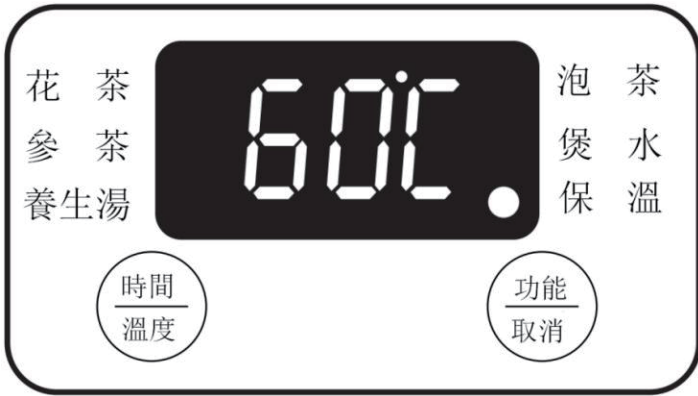


接通電源後，顯示屏幕出現 OFF 字進入待機模式，用手輕按“功能/取消”鍵，選擇“養生湯”程式，程式指示燈閃亮顯示，5 秒鐘後產品自動進入工作狀態，屏幕顯示養生湯程式默認工作時間，用手輕按“時間/溫度”鍵，可調時間範圍為 15-60 分鐘；點按以 5 分鐘遞增，長按以 10 分鐘遞增，並循環調節。當完成工作程式後，本機“Beep”一聲提示音後進入 24 小時保溫模式，預設自動保溫溫度為 60 度，或在可調範圍 30°C-90°C 內自設所需保溫溫度。

提示：本程式最小水量約 200ml 水量，滿過湯料，最大水量為 500ml，如超過 500ml，水滾後沸水會從煲內流出導致燙傷。（以上數據僅供參考）若湯類需加調味（糖/鹽）時，請完成煲滾程式後倒出湯料再在碗中加入調味，不可直接在水壺內加入任何調味後直接加熱操作，以延長本產品的壽命。



2



“保溫”程式指示燈長亮：默認保溫時間 24 小時，默認保溫溫度 60℃，顯示溫度隨水溫及環境變化有±3℃的浮動。按“時間/溫度”鍵可調節保溫溫度，可調範圍 30-90℃，點按以 1℃遞增，長按以 5℃遞增，並循環調節。保溫 24 小時會倒數直至完成發出“Beep”一聲提示音後進入 OFF 待機狀態。

## 六、其他功能

1. 提壺記憶功能：產品功能若在工作過程中把壺提起約 1 分鐘後再把壺放回底座上，產品會繼續執行上次未完成的工作程式。

2. 斷電記憶功能：產品在工作過程中斷開插頭電源約 1 分鐘再重新連接電源，產品會繼續執行上次未完成的工作程式。
3. 產品無水乾燒或食材煮成糊狀超溫，產品會自動感應切斷電源，顯示屏沒有任何顯示，待壺內溫度降低或往壺內加入冷水後顯示屏顯示 OFF 待機模式。切記壺底有加熱後出現粘底糊跡或有燒焦味，必須清洗乾淨才可以繼續使用。
4. NTC 傳感器若出現超溫或者糊底顯示屏顯示上見 E2,等溫度降下來可以正常使用，NTC 短路顯示 E3。請聯絡我司售後服務部進行檢查維修（E2 及 E3 是故障顯示）

## 七、清潔及保養

1. 請保持本機的底座表面清潔，使用一段時間後，必須及時清理底座表面的污垢或水。
2. 清洗玻璃壺身時請勿浸入水中或讓液體流入產品內部或底座內部，以免發生危險！
3. 如果玻璃壺中無水，請勿開始任何操作功能加熱及煲水，否則會影響到產品的使用壽命。
4. 請不要將電源線、插頭及整機或底座等浸入水裏或其他的液體裏面，防止損壞產品而觸電。
5. 本產品只可在提供的底座上使用。

## 產品規格

產品型號: GMK600P

額定功率: 600 W

電壓頻率: 220-240V~ 50/60Hz

最大容量: 600ml

產品尺寸: 150(闊) x 211(高) x 106(深) (連底座)

\*相關產品的規格，可能會因配件批次或實際使用地區的電壓差異而有所不同。

請記錄下列產品資料

- 型號 \_\_\_\_\_
- 機身編號 \_\_\_\_\_
- 經銷商名稱 \_\_\_\_\_
- 購買日期 \_\_\_\_\_

本產品不斷改進中，如功能有所更改，恕不另行通知，如有疑問，請與客戶服務中心聯絡，不便之處，敬請原諒。

說明書內容以英文版本為準

**ToolBox Customer Service Centre 客戶服務中心：**  
4/F, DCH Building, 20 Kai Cheung Road, Kowloon Bay, Hong Kong  
香港九龍灣啓祥道20號大昌行集團大廈4樓

Customer Service Hotline 客戶服務熱線：(852) 8210 8210  
Service E-mail 電郵地址：8210service@gilman-group.com  
Please register now at 請即上網登記：www.toolbox.hk  
Website 網址：www.gilman-group.com



Proudly Serviced by:



**太平家庭電器**