

gemini
ITALY

**Handheld Cordless
Rechargeable Humidifier
手提無線充電式加濕器
Model NO./型號: GH8P**

Before using your product for first time please read this instruction manual
在使用本產品前請仔細閱讀本說明書並保存好

Safety Precautions

Thank you for choosing our product. For your consumer rights and interests, please carefully read the warranty card and keep it properly. Items related to the product warranty are specified as follows:

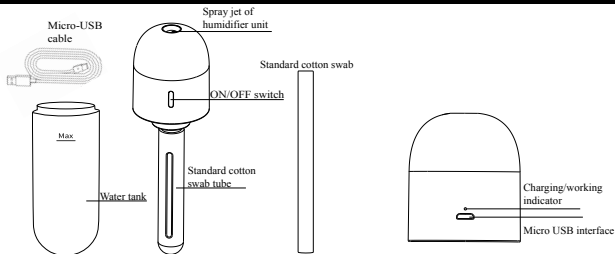
1. This product is only applicable for household use only, which is prohibited for commercial use.
2. Do not immerse the USB port and the whole product in the water or other liquid, to prevent electric shock or damaging the product.
3. If the product or other components are found to be damaged, please stop using.
4. This product is not for children under 8 years of age as toys, please follow the instructions carefully.
5. Adults should guide children not to play with this product.
6. Do not use this product under the environment of high temperature, high humidity, excessive dust, corrosive, flammable and combustible gas (such as kitchen).
7. Do not use this product around heating equipment (such as oven, fan heater or other heating devices) or under direct sunshine.
8. Do not use this product while the temperature varies seriously before or when the product is on.
9. Plug in the provided USB cable for charging the built-in battery, At this time, the charging indication red light will on ,when it is full of charging, indication light will turn off.
10. If an abnormal high temperature or deformation occurs in the charging process, stop charging immediately and please contact our after-sales service center .
11. If the product is technically updated, please be subject to the new instructions, no further notification will be published.
12. Automatic off when no operate after 3 hours, (Save energy and enhance the service life of the battery)
13. The cotton swab of humidifier needs to fully absorb water before the humidifier can work. Otherwise, the atomizer will be easily damaged. If you use it for the first time or for a long period of time no using it, please wait patiently for 3-5 minutes after adding water, and wait for the cotton core to fully absorb water.
14. It is recommended to use mineral water and tap water , and it is not recommended to use distilled water or pure water with many impurities. Because pure water and distilled water are not easy to make fog, and water with many impurities will affect the service life of cotton swab and even block the cotton swab .
15. In case of humidifier will stop working in a long time, please keep the battery in a full charged condition.
16. Battery's life time would be shortened if you keep it in a wet place

Do not add any essential oil and in appropriate water when in use

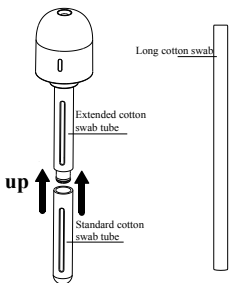
Warning

- This product is not for children under 8 years of age as toys, please follow the instructions carefully.
- When charging the product, charge the product with the Power above: 5V/1A adapter (adapter is not included) and use the provided USB cable. Product can also work when it is connected by USB cable.
- Do not use this product in wet environment, such as bathroom, contact with water/rain may lead to product failure and damage.
- Please do not knock or slap this product, anti-knock may lead to internal damage.
- Do not disassemble or repair it by yourself.
- Do not put the product into the fire to avoid the danger of explosion.

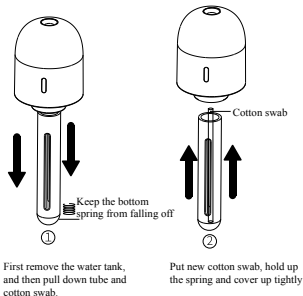
Product Overview



Humidifier with standard cotton tube with swab used in water tank



Humidifier with extended cotton tube and long cotton swab used in other container



Step to change cotton swab

Remarks: Product images are for reference only, the actual product shall prevail.

Guide to use humidifier

1. Firstly add water to water tank, and then put the cotton swab tube into the water tank.
2. The cotton swab needs to fully absorb water before the humidifier can work. Otherwise, the atomizer plate will be easily damaged. If you use it for the first time or for a long period of time no using it, please wait patiently for 3-5 minutes after adding water, and wait for the cotton swab to fully absorb water.
3. Press the ON/OFF switch to turn it on (white light will on). Press switch once to turn on the continuous spray mode, and the scheduled spray will stop automatically after 3 hours.
Press the ON/OFF switch second time to turn on the intermittent spray mode (white light will on), spraying for 3 seconds and stopping for 2 seconds, and it automatically stop spraying after 3 hours.
Press ON/OFF switch third time if you want humidifier to stop spraying (white light will off).
4. When humidifier is working, the working indication white light will on ,when it is not working, indication light will turn off.
5. Do not touch the spray jet with your hands or hard objects in case of damage and blockage of the atomizer plate.
6. When filling water, do not hold head of humidifier, but hold the water tank or other water container.
7. When replacing the cotton swab, make sure that the spring does not fall out. The humidifier cannot spray without the spring.
8. If the water is completely filled, the humidifier will not be able to spray. It can not fill water above the maximum water line of tank. Do not add hot water or essential oil in device.

Product specification

Model.: GH8P

Input/output: DC5V /0.6A

Power: 2W

Battery capacity :800mAh Li-battery

Product size: 48W*158H*48Dmm

Water tank capacity: 100ML

Amount of spray: 40-60ml/Hour

Charging time : Around 2.5 Hours full charged

*The final product specification may be varied according to a different lot of material and actual input voltage power of the usage area.

Accessories

1. Micro-USB charging cable*1
2. Standard cotton swab*1
3. Standard cotton swab tube*1
4. Extended cotton swab*1
5. Extended cotton swab tube*1

Guide to change cotton swab

1. Cotton swab is a consumable item: the general life span is one to two months, and it varies slightly due to the difference in water quality and daily use time.
2. When the cotton swab absorbs too much impurities: water spray volume of the humidifier will be significantly reduced or the spray will stop. In this case, please replace the cotton wick in time.
2. When replacing the cotton swab, remove the water tank first and then pull out the cotton swab tube downwards. Please take care and keep the bottom spring from falling off. Lastly, put in a new cotton swab and hold up the spring and cover up tightly.

Charging / Usage time

After full charging : Turn on the spray mode, usage time: about 2.5 hours

After full charging : Turn on the intermittent spray mode, usage time: about 5 hours

Full charging time: around 2.5 hours by DC 5V/1A or higher with adapter (not included) and with provided USB charging cable.

The machine will be automatic off when no operate after 3 hours

Multiple Circuit Protection

In order to prevent the battery from being easily damaged and prolong the service life of the battery.

Over-charge protection: When voltage reaches 6V, it will automatically stop charging and prevents the damage caused by the over charging of the battery.

Over-discharge protection: when the battery is depleted. This product will automatically stop .

Over-voltage protection: When the external charging voltage is higher than 4.2V, it will automatically stop charging.

Troubleshooting for non-atomizing humidifier

1. Check whether both ends of the cotton core are soaked to fully absorb water before using
2. After the humidifier is not used for a long time, the upper end of the cotton wick will be dry, which may cause no fogging, so it needs to be re-moistened.
3. It is recommended to use short cotton core, long cotton core will produce less fog under low water level.
4. The cotton core absorbs more impurities and needs to be replaced
5. Use cotton swab with a little vinegar to gently wipe the atomized sheet.
6. It is not powered due to lack of power or battery power failure.
7. When the product does not spray during use, soak the entire cotton swab in water for about 2 minutes and take it out for use

安全注意事項

感謝您選擇我們的產品。為了您的消費者權益，請仔細閱讀本說明書並妥善保管。與產品保修相關的專案如下所示：

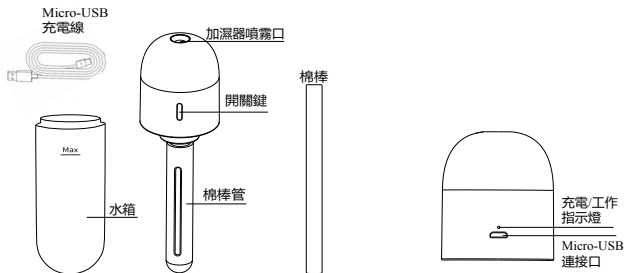
- 1.本產品僅適用於家庭使用，禁止商業使用。
- 2.請不要將 USB 充電錢及整個產品等浸入水裏或其他的液體裏面，防止損壞產品而觸電。
- 3.發現本產品或其他部件損壞時，請停止使用。
- 4.本產品非供 8 歲以下兒童做為玩具使用，請遵循說明謹慎使用。
- 5.成人應該指導小孩不可把玩此產品。
- 6.在高溫、高濕度、過高粉塵、腐蝕性、易燃、可燃氣體（如廚房）的環境下不要使用本產品。
- 7.不要在加熱設備（如烤箱、風扇加熱器或其他加熱設備）周圍或陽光直射下使用本產品。
- 8.在產品開機前或開機前周圍環境溫度變化很大時，不要使用本產品。
- 9.插入 USB 充電線給內部電池充電時，此時充電指示燈紅燈亮起，充滿電時，紅燈燈熄滅。
- 10.在充電過程中發生異常高溫或變形時，應立即停止充電，並聯繫我們客戶服務部。
- 11.如果產品在技術上更新，請接受新的說明，不再公佈進一步的通知。
- 12.無人操作情況下，3 小時會自動斷電關機。（電池起到省電作用，增強電池使用壽命）。
- 13.棉棒需要充分吸收水分後加濕器方能工作，否則易損壞霧化片，第壹次或長期不使用時，加水後需耐心等待 3-5 分鐘，待棉棒充分吸水。
- 14.推薦使用礦泉水和過濾過之自來水，不建議使用蒸餾水或純淨水，因為純淨水和蒸餾水水質較細，不易成霧，比較容易結水珠，雜質較多會影響棉棒的使用壽命甚至堵塞霧化孔。
- 15.如果加濕器長時間停止工作，請保持電池充滿電。
- 16.如果你把電池放在潮濕的地方，它的使用壽命就會縮短

本產品請勿加入任何精油及非指定水使用

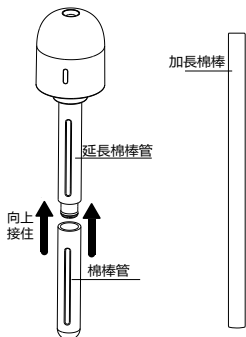
警告

- 本產品非供 8 歲以下兒童做為玩具使用，請遵循說明謹慎使用。
- 給產品充電時，請使用輸出電壓/電流為 5V/1A 以上充電插頭（不供應此配件）進行充電，並使用附送 USB 充電線。本產品亦可直接連接 USB 線使用。
- 產品禁止投入水中或火中使用，如發生漏電等異常情況，請立即停止使用，以免發生危險。
- 請勿在潮濕環境中（如浴室、下雨中）使用本產品，接觸水可能會導致產品故障損壞
- 請勿敲擊或摔打本產品，反覆敲擊可能會導致內部損壞。
- 請勿自行拆卸，更改修理本產品。

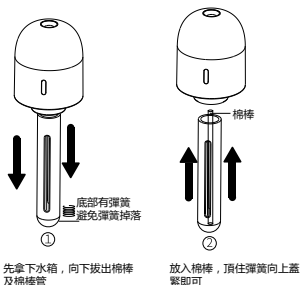
產品結構圖



原裝水箱配置



加長配置適合不同尺寸水箱



更換棉棒步驟

備註：產品圖片僅供參考，具體以實物為準。

使用加濕器指南

1. 第一步向水箱裏加水，第二步將棉棒管放進水箱。
2. 棉棒需要充分吸收水分後加濕器方能工作，否則易損壞霧化片，第壹次或長期不使用時，加水後需耐心等待約 3-5 分鐘，待棉棒充分吸水。
3. 按一下開關鍵(指示燈白燈會亮起)。按第壹下開啟持續噴霧模式，定時噴霧 3 小時自動停止。
按第二下開關鍵(指示燈白燈會亮起)開啟間歇噴霧模式 噴 3 秒停 2 秒，定時噴 3 小時自動停止。
按第三下開關鍵(指示燈白燈會熄滅)，停止噴霧。
4. 當加濕器工作，工作充電指示燈白燈亮起，斷電後，白燈燈熄滅。
5. 請勿用手或硬物接觸噴霧孔口，以免導致霧化片受損堵塞。
6. 裝水情況下，請勿握住加濕器頭部，要抓住水箱或其他裝水容器。更換棉棒時，應保證彈簧不會掉出，沒有彈簧的情況下加濕器無法噴霧。
7. 水完全加滿後會導致加濕器無法噴霧，加水至 90%較佳，請勿超過水箱上的最高水位線，切記不能加熱水或精油於產品內使用。

產品規格

產品型號: GH8P

輸入電壓/電流: DC5V /0.6A

功率:2W

電池容量: 800mAh 鋰電池

產品尺寸: 48 闊*158 高*48 深 毫米

水箱容量: 100ML

噴霧量: 40-60ml/小時

充滿電時間: 約 2.5 小時

*相關產品的規格，可能會因配件批次或實際使用地區的電壓差異而有所不同。

產品配件

1. 附送 micro-USB 充電線壹條
2. 標準棉棒壹條
3. 標準棉棒管壹條
4. 加長棉棒壹條
5. 加長棉棒管壹條

更換棉棒使用指南

1. 棉棒屬消耗品: 壹般壽命為壹至兩個月，因水質和日常使用 時長的不同而略有差異。
2. 棉棒吸收雜質過多時:加濕器噴霧量會明顯減少或停止噴霧，該情況下請及時更換棉棒。
3. 更換棉棒時，先拿下水箱，向下拔出棉棒管，注意底部彈簧避免掉落。然後放入新棉棒，頂住彈簧向上蓋緊即可

充電時間及使用時間

充滿電後：單擊開關開啓持續噴模式，可使用時間約 2.5 小時

充滿電後：按第二下開關開啓噴霧模式，可使用時間約 5 小時

充滿電時間約 2.5 小時，請使用輸出電壓/電流為 5V/1A 以上充電插頭（不供應此配件）進行充電，並使用附送 USB 充電線。

若無人操作情況下，持續噴模式和噴霧模式 3 小時會自動斷電關機。

多重電路保護

為防止電池容易損壞，增加電池使用壽命

過壓保護：當外部充電電壓高於 6V，會停止充電。

過放保護：當電池耗盡時，本產品自動斷電以保護設備。

過充保護：充電時當電池電壓達到 4.2V 時，停止充電，防止電池過充而損壞。

加濕器不出霧的故障排查

- 1、使用前，查看棉棒兩端是否都浸泡至充分吸水。
- 2、加濕器久置後，棉棒上端幹燥易導致無法出霧，需重新浸濕。
- 3、建議使用短棉棒，長棉棒在低水位情況下出霧較小。
- 4、棉棒吸收雜質較多，需要更換棉棒
- 5、可用棉簽等蘸少許醋對霧化片進行輕輕擦拭。
- 6、因為沒插線或者電池電理不足故障故障等原因的不通電使用。
- 7、產品在使用過程中出現不噴霧時，應把整個棉棒浸泡在水裏約 2 分鐘後拿出來使用

請記錄下列產品資料

- 型號 _____
- 機身編號 _____
- 經銷商名稱 _____
- 購買日期 _____

本產品不斷改進中，如功能有所更改，恕不另行通知，如有疑問，請與客戶服務中心聯絡，不便之處，敬請原諒。

說明書內容以英文版本為準

ToolBox Customer Service Centre 客戶服務中心：
4/F,DCH Building, 20 Kai Cheung Road, Kowloon Bay, Hong Kong
香港九龍灣啟祥道20號大昌行集團大廈4樓

Customer Service Hotline 客戶服務熱線：(852) 8210 8210
Service E-mail 電郵地址：8210service@gilman-group.com
Please register now at 請即上網登記：www.toolbox.hk
Website 網址：www.gilman-group.com

Proudly Serviced by:



太平家庭電器