

gemini
ITALY

手提式蒸氣掛燙機
HANDHELD GARMENT STEAMER
Model No.型號：GSS1000DB
1000W

Before using your product for first time, please read this instruction manual.
在使用本產品前，請仔細閱讀本說明書並保存好。

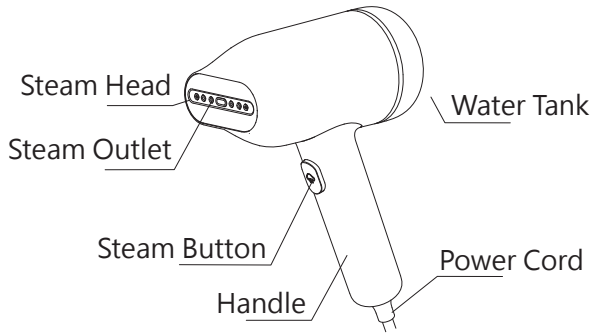
Safety Instructions

1. Please read these instructions carefully and retain for future reference.
2. This appliance is not intended for use by persons (including children under 8 years old) with reduced physical, sensory or mental capabilities, or lack of experience and knowledge, unless they have been given supervision or instruction concerning use of the appliance by a person responsible for their safety. Children should be supervised to ensure that they do not play with the appliance.
3. All the repairs carried out solely by a qualified electrician. Never try to repair the appliance yourself.
4. Use this appliance solely in accordance with these instructions.
5. Never use the appliance at outdoor or in a humid room.
6. Before start to use, ensure the power supply same as indicate at the appliances. The power supply should has earth wired.
7. When power cable is damaged, please contact service center for replacement. Do not replace it by your own.
8. While use , do not press the button with great force, it will damage the button and control panel.
9. Any faulty operation must switch off power and unplug the power supply. Do not unplug while your hand is wet, it will get electric shock.
10. Do not pull the line along sharp object / sharp edges, crimp the wire or let it hang down. Also put away from hot and wet condition.
11. Do not insert any metal object into the heat dissipation holes / gaps, otherwise it might cause electric shock.
12. Do not place the product on the surface or beside extreme heat condition, such as oven.
13. It is forbidden to use this product on an unstable / inclined platform to avoid accident such as injury or fire cause by products falling over.

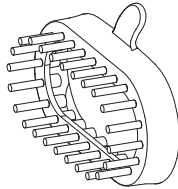
14. Keep away from children or in-experienced person to operate this product.
15. The product will generate steam when it is working. It is easy to cause burns from the steam outlet. Please be careful while using it.
16. Do not allow liquid to flow into the product during cleaning, and to avoid danger do not allow the power cord, plug, main body, etc. to dip in the water.

This product is suitable for household use only.

Product Review



Accessories: Hair Brush x1



Notice :

The picture is for reference only, assemblies maybe different from the picture.



Indicates prohibited contents



High temperature sign. Be careful of scalding

Precautions before Use

1. Connect the power cord and check the plug and power cord in detail.
2. When power cord is damaged, please contact service center for replacement. Do not replace it by own.
3. Make sure the power plug is dry before use.

Precautions during Use

1. Do not use this product for the purposes other than ironing clothes. Do not leave while the appliance is operating.
2. Do not use it when the water insufficient in water tank.
3. Please unplug power cord before filling water.
4. When the appliance is operating, please be careful to avoid the steam splashing. Do not aim the steam head to others as to avoid scalding.
5. When the appliance is operating, the air outlet will become very hot. Do not touch it to avoid scalding.
6. When the appliance is operating, high-temperature steam will be generated, which can cause deformation, color change and discoloration of clothes with poor heat resistance (such as leather). Do not use it if any.
7. When the appliance is operating, do not touch the hot surface of the machine, such as: steam head.
8. Do not use other high-power electrical appliances in the same socket to avoid circuit overload.

Precautions after Use

1. After use, please switch off the machine before unplug the power cord.
2. When plugging or unplugging, please hold the plug, and it is forbidden to pull the power cord or operate with wet hands.
3. Before storing the product, make sure that the product has cooled down and the water in the machine has been drained.

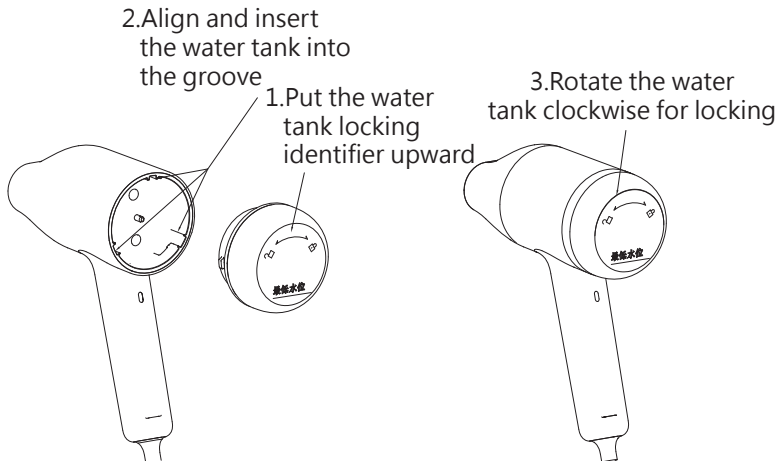
Anomaly or Failure

1. In the event of any anomaly or failure, please stop using it immediately to avoid fire, electric shock or get injury.
2. The power cord and power plug become abnormally hot during use.
3. There is water mist inside the button, or water leaks from the bottom of the appliance.

Usage Instruction

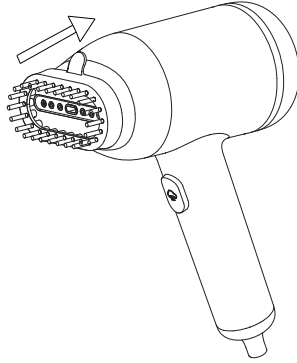
1. Water tank:

Hold the handle with one hand, align the water tank with the slot of the water tank fixing base with the other hand, rotate it clockwise, and installation is completed. To take out the water tank, turn the water tank counterclockwise, and then pull it out.



2. Hair brush:

Hold the handle of the garment steamer, align the hair brush with the fastener from top to bottom, and install it on the steam head.



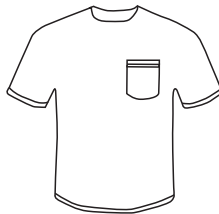
Notice:

Install and remove the hair brush when the appliance is cooled down, so as to avoid high-temperature scalding.

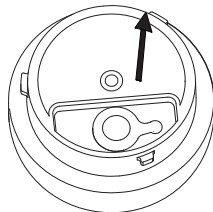
Instructions for use

Preparation work:

1. Hang up the clothes to be ironed.



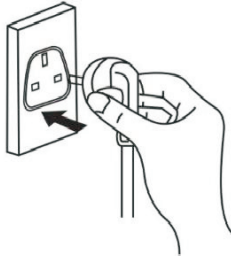
2. Open the sealing cover of the water tank and fill water to the water tank (Max 120ml).



Notice:

In order to prolong the product life, it is recommended to use purified water or distilled water, and close the sealing cover of the water tank tightly.

3. Install the water tank and plug in the power.



Startup and Ironing:

1. After connecting the power supply, the machine enters the preheating mode, please wait for around 10 seconds, then press the steam button, the steam will spray out. Release the steam button, the steam function will stop.



2. During operation, the power indicator lamp will be on and off from time to time, which is a normal phenomenon, and indicates that the machine is holding the required temperature.

Notice:

Please disconnect the power supply after use to avoid scalding.

Cleaning and Maintenance

Notice:

1. Do not clean with the strong volatile solvent.
2. Do not put chemicals in the water tank.
3. Put the water tank back to the garment steamer, and put the product at a free place.
4. During filling and cleaning, remember to unplug the power.
5. Do not immerse the product in water for cleaning.
6. Do not put vinegar, cleanser essence, saline solution and other chemicals into the water tank.

Maintenance Steps:

1. Please disconnect the power supply if it is not used for a long time.
2. After use for each time, drain the water in the water tank, and put the water tank back into the garment steamer.
3. Wipe the surface of the body with a towel to remove dust.

Notice:

When use for first few times, smoke might be emitted from the product, it is a kind of harmless odor and slight light particles. These are residues from combustion during production. These are harmless and will disappear quickly.

Safety Protection:

1. Overheat detection and protection: the appliance has a built-in temperature-sensing component. When the temperature rises abnormally, the temperature-sensing component will send a signal to control disconnection of the heating component, so as to control the product temperature in a suitable temperature range.

2. Thermal fuse protection: the appliance has a built-in thermal fuse. When the temperature is abnormal and the temperature-sensing component fails, the thermal fuse will be disconnected and the power supply will be cut off automatically to prevent accidents.

Frequently asked Questions

Failure	Cause analysis	Troubleshooting
No response at startup	The power plug is not inserted	Retighten the cup lid
	Whether the power switch is pressed	Press the power switch
	Product circuit failure	Ask professionals to check and repair
There is noise during operation	No water or too little water in the water tank	Fill water in the water tank
	The internal water inlet pipe is bent or disconnected	Ask professionals to check and repair
	Cause analysis	Install the water tank correctly according to the instructions

Notice:

If reviewed the above situations and still cannot solve the problem, please contact our hotline. It is strictly prohibited for non-professional individuals to disassemble or assemble the product.

Product Specifications

Model: GGS1000DB

Voltage: 220-240V ~

Frequency: 50-60Hz

Power: 1000W

Water tank capacity: 120mL (Max)

Product dimensions: 76(W) x 211(H) x 150(D) mm

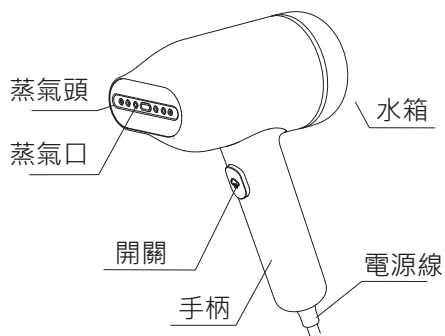
*** The specifications of related products may vary depending on the batch of accessories or the voltage difference in the actual use area.**

安全指引

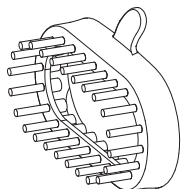
1. 請於操作前詳閱操作指引，避免使用不當而造成損壞或危險。
2. 8歲以下兒童、傷健人士、精神及感官受到影響及缺乏操作常識和經驗者不適宜獨立操作此產品。如需操作，需有相關人士從旁指引及對其行為安全負責。
3. 如本產品出現問題，請聯絡代理商或合資格人士處理，不要自行進行維修以免發生危險。
4. 請遵從本產品上的規格表資料連接電源。
5. 本產品只適用於家居室內操作，並不適用於商業用途及不要在濕度高的空間內使用。
6. 使用前請確保插座正確連接地線，同時請確認輸入電壓為220-240V~50-60Hz。
7. 如果電源線損壞，請聯絡維修部安排更換。
8. 操作按鍵時不可用力過猛，以防按鍵損壞。
9. 在使用過程中，若發生問題時，請先將電源插頭從插座上拔下；請勿濕手拔/插插頭，以免觸電。
10. 請勿以尖端物或鋒利邊緣來拽線、壓線或讓它懸垂下來，同時要遠離熱源和濕源。
11. 不要將金屬等異物插入散熱孔或間隙中，否則可能導致電路損壞。
12. 切勿將本產品放置在帶熱源的表面上或熱源旁，如焗爐。
13. 不要在地毯、塑膠凳這些不耐熱的表面或者附近使用，會因蒸氣受損的物體不要放置在本產品上方。
14. 本產品不適用於兒童、精神病患者或缺乏經驗的人使用或把玩本產品。
15. 產品工作時會產生蒸氣，容易引起燙傷，請務必小心。
16. 清洗時請勿讓液體流入產品內部，也不可將電源線、插頭等浸入液體裏以免發生危險。
17. 使用後本產品或會有餘熱，小心燙傷。

注意：此產品只適合家庭用途。

部件示意圖



配件：長毛刷×1



注意：產品圖片與實物略有不同，請以實物為準。

⊘ 表示禁止的內容

⚠ 高溫標示，小心燙傷

使用前注意事項：

1. 連接電源線，請詳細檢查插頭、電源線。
2. 如果電源軟線損壞，為了避免危險，必須由製造商、其維修部或類似部門的專業人員更換。
3. 使用前要保證電源插頭乾爽。

使用中注意事項：

1. 請勿將本產品用於熨燙衣物外的其他用途。使用期間，使用者不能離開。
2. 請勿在水箱內的水量不足時加熱使用。
3. 加水前，請拔出電源線插頭。
4. 使用期間，要注意防止由於蒸汽噴濺的危險，切勿將蒸氣頭對著人，以免燙傷。
5. 使用期間，出氣口會變得非常燙，請勿觸摸，以免燙傷。
6. 使用期間，會產生高溫蒸汽，對耐熱性不好的衣物（如皮衣）會引起變形、變色、脫色，請勿使用。
7. 使用期間，請勿將電源線接觸到機器發熱的表面，比如：出氣口附近等。
8. 請勿在同一個插座上使用其他大功率電器，避免電路超載。

使用後注意事項：

1. 使用完畢，請先關閉機器電源開關，再拔出電源線插頭。
2. 插拔插頭時，必須手握插頭，禁止拉電源線或濕手操作。
3. 收藏產品前，需確保產品已冷卻，並將機器內的水排出。

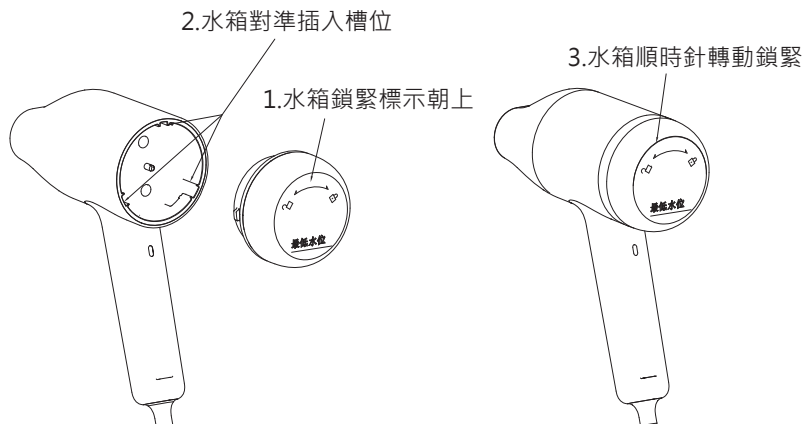
異常或故障：

1. 發生異常或故障時，立即停止使用，以免造成火災、觸電或受傷。
2. 使用時電源線、電源插頭異常發熱。
3. 按鍵內部有水霧、器具底部漏水。

使用说明：

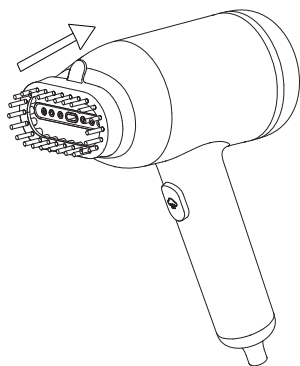
1. 水箱：

握緊手柄，將水箱對準水箱固定座槽位裝入，再順時針旋轉到位，即安裝完成。當需要取出水箱時，先將水箱逆時針旋轉到位後，再拉出即可。



2. 毛刷：

握緊手柄，將毛刷由上往下，對準卡扣，安裝到蒸氣頭上即可。



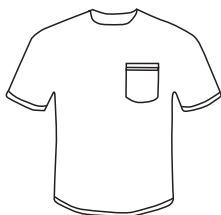
提示：

在產品冷卻後，才可安裝和拆卸毛刷，避免高溫燙傷。

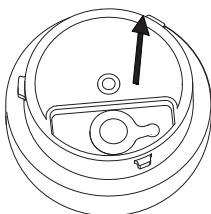
使用說明

準備工作：

1. 掛好需熨燙的衣物。



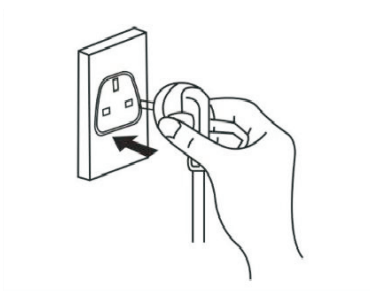
2. 打開水箱密封蓋，往水箱加水。



提示：

為了延長產品的使用壽命，建議使用純淨水或蒸餾水，並蓋緊水箱密封蓋。

3. 裝好水箱，插上電源插頭。



開機熨燙：

1. 插上電源後，掛燙機進入預熱狀態，等待約10秒後再按下蒸氣按鈕，蒸氣噴出，鬆開蒸氣按鈕，蒸氣停止。



2. 在正常使用過程中，電源指示燈會時亮時滅，屬於正常現象，表示掛燙機在維護所需要的溫度。

提示：

使用完成後，請拔掉電源，以免燙傷。

清潔保養

注意事項：

1. 請勿用強揮發性溶劑清洗。
2. 請勿將化學品放入水箱。
3. 將水箱放回掛燙機，將產品放置空間處。
4. 在清潔時，應將電源插頭拔掉。
5. 請勿把產品浸入水中或其他溶液裏清洗。
6. 請勿將醋、洗潔精、鹽水溶液等化學品放入水箱中。

保養步驟：

1. 長時間不使用時請拔出電源。
2. 每次使用後，請將水箱內的水排乾淨，並將水箱放回主機。
3. 用毛巾擦拭機身表面，去除灰塵。

注意：

在初期使用時，產品可能會出現煙霧，一種無害的氣味和輕微的粒子，這些只是生產過程中燃燒的殘留物。這些是無害的，會很快消失，請放心使用。

安全保護：

1. 溫度檢測保護：產品內置感溫器，當出現溫度異常升高時，感溫器會輸出信號，停止加熱，從而控制產品溫度在合適的溫度範圍。
2. 熱熔斷器保護：產品內置熱熔斷器，當出現溫度異常，感溫器又失效時，熱熔斷器會斷開，直接切斷電源防止發生意外。

常見問題

故障現象	原因分析	故障排除
開機無反應	未插電源插頭	重新旋緊杯蓋
	電源開關是否按下	按下電源開關
	產品電路故障	請專業人員檢查、維修
運作時有雜音	水箱沒水或水太少	給水箱加水
	內部進水管彎折或脫開	請專業人員檢查、維修
	水箱安裝不到位	按說明指示正確安裝水箱

備註：

經以上現象分析後仍無法排除故障，請與本公司維修點或經銷商聯繫，嚴禁非專業人員對本機自行拆裝。

產品規格

型號：GGS1000DB

電壓：220-240V ~

頻率：50-60Hz

功率：1000W

水箱容量：120mL (最大)

產品尺寸: 76(闊) x 211(高) x 150(深) 毫米

*相關產品的規格，可能會因配件批次或實際使用地區的電壓差異而有所不同。

請記錄下列產品資料

- 型號 _____
- 機身編號 _____
- 經銷商名稱 _____
- 購買日期 _____

本產品不斷改進中，如功能有所更改，恕不另行通知，如有疑問，請與客戶服務中心聯絡，不便之處，敬請原諒。

說明書內容以英文版本為準

ToolBox Customer Service Centre 客戶服務中心：
4/F, DCH Building, 20 Kai Cheung Road, Kowloon Bay, Hong Kong
香港九龍灣啓祥道20號大昌行集團大廈4樓

Customer Service Hotline 客戶服務熱線：(852) 8210 8210
Service E-mail 電郵地址：8210service@gilman-group.com
Please register now at 請即上網登記：www.toolbox.hk
Website 網址：www.gilman-group.com



Proudly Serviced by:



太平家庭電器

订单号： BE2355

注：以下内容为审核专用，非印刷内容，请须知！

变更简要说明：		小熊电器股份有限公司	
设计	林延施	图号	GTJ-B10S1(GSS1000DB)-45-05
(校对) 业务	徐嘉宝/陈敏珠	物料名称	说明书
(校对) 项目工程师	廖雄飞	物料编码	4084100001274
批准	熊小辉	图纸版本	B 版
日期	2021年08月18日		