

## WI-FI APP INSTRUCTION MANUAL

Please scan the QR code to download the latest App software.  
The latest App software integrated air conditioner, dehumidifier and Portable air conditioner



### INSTALL THE APP

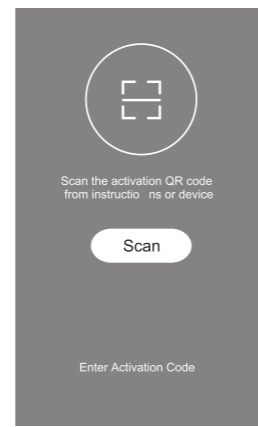
When download the APP software, you can install it in your smart phone.  
After installation, you can find the "Smart Life" icon on your phone desk.



-01-

### ACTIVATE QR CODE

1. When you first time enter the App, it will display activation interface, you can select scan activation QR code (click "Scan" button and scan the activation QR code in below page) or input "activation code" words (in be- low page), click "activate" button to activate it.



2. Dehumidifier activation QR code

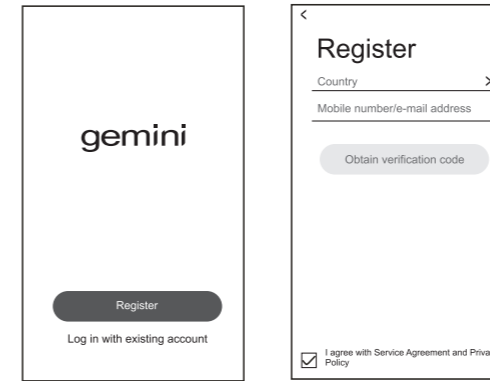


3. Dehumidifier activation code WORDS: gemini

-02-

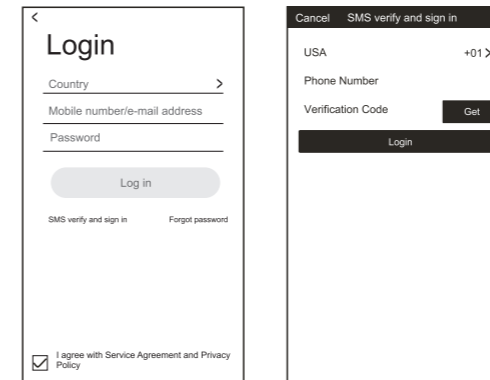
### REGISTER USER ACCOUNT

When you first time use the App, you need to register an account. Click "Register" button to enter to the register interface. You can register with email or "Register with Mobile number".



### LOGIN USER ACCOUNT

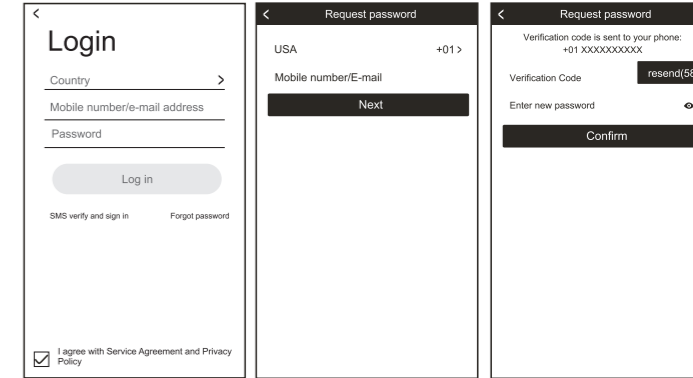
1. Register account login, fulfill the registered email or phone number account and password, press "Login" button.  
2. Phone number login, press "Sign in with SMS" button to enter the next page, fulfill the phone number and press "get" button to receive the confirm code, and fill in, then press "Login" button.



-03-

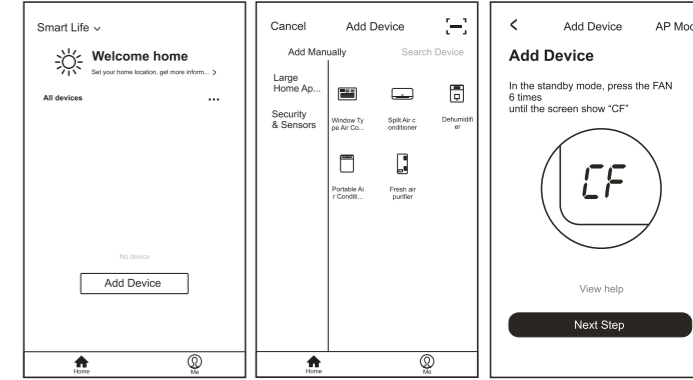
### FORGET PASSWORD

1. Press the "Forgot password" button to the next page.  
2. Fulfill the registered phone number or email account, press "Next" button to the next page.  
3. You will receive the verification code, fulfill it, and set the new password, press "confirm" button.



### ADD THE DEVICE

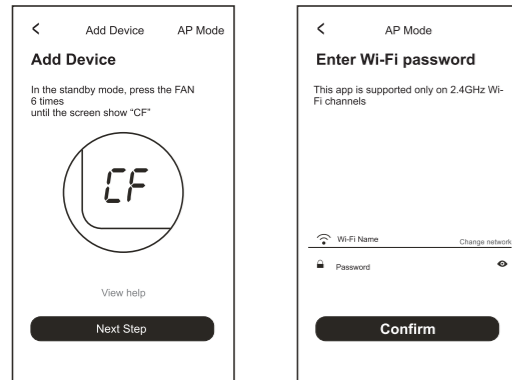
1. Press "Add Device" button to next page, select the product type.  
2. There are two methods to do the device match, "CF" or "AP mode" You can choose by the different button



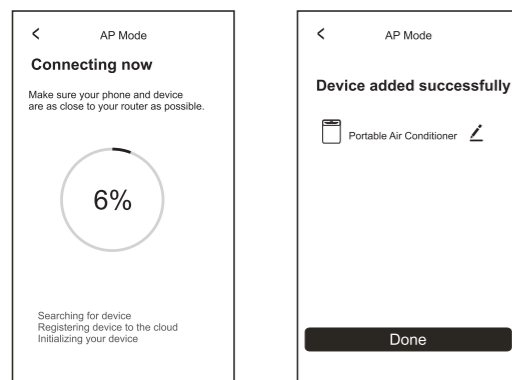
-04-

### ADD THE DEVICE (CF MODE)

1. The system defaults to CF mode at first, Press "Next Step" to continue.  
2. Select the home router, and fulfill the password of router, press "Next" to continue.  
3. In standby, press the "FAN" key (or "TIMER" key, please refer to the prompts on the Add Device interface) on the control panel 6 times within 4 seconds until the LED screen show "CF" or "AP", which can make WIFI reset, there will be switch between "CF" and "AP" if press many times.



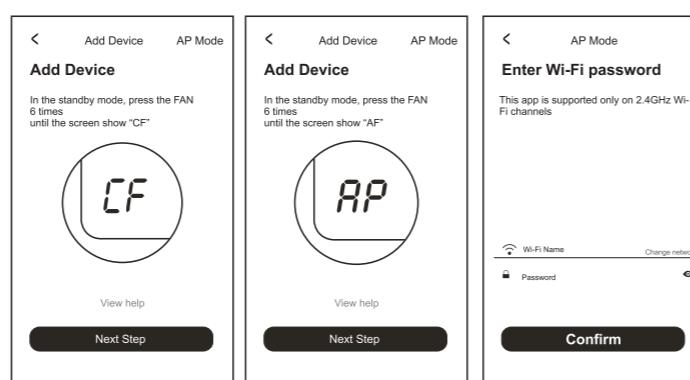
4. The APP software will automatically do the device match.  
5. After match successfully, the page will display the prompt as below.  
6. You can "Rename" the device name as you like, or share with family, or press "Done" to start to control the device



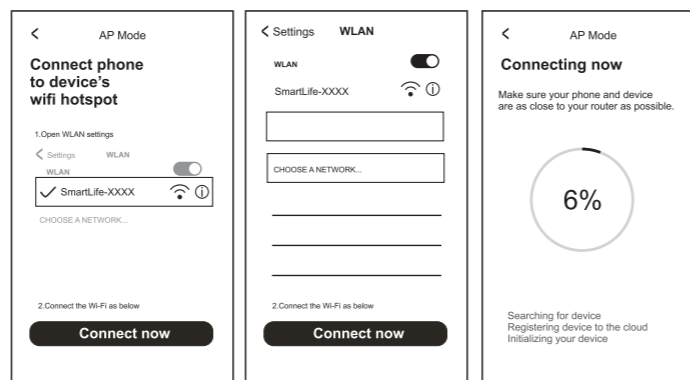
-05-

### ADD THE DEVICE (AP MODE)

1. Click the "AP Mode" to the "AP" page, Press "Next Step" to continue.  
2. Select the home router, fulfill the password, press "Next" to continue  
3. In standby, press the "FAN" key (or "TIMER" key, please refer to the prompts on the Add Device interface) on the control panel 6 times within 4 seconds until the LED screen show "CF" or "AP", which can make WIFI reset, there will be switch between "CF" and "AP" if press many times.

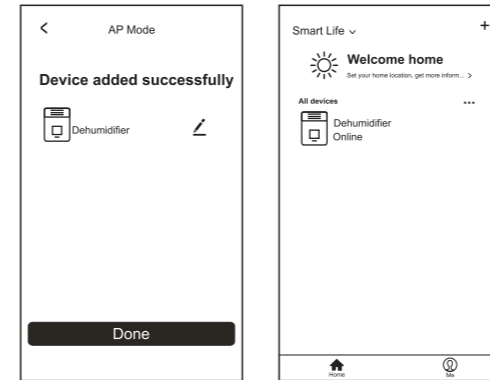


4. Select the AC Device as name "SmartLife-XXX" at the WLAN setting, then back to the APP interface. The APP will automatically do match



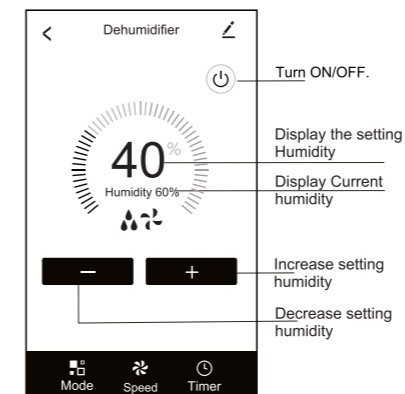
-06-

5. After match successfully, the page will display the prompt as below.  
6. If match failed, the APP will mention it, and press "Retry" to try again.



### DEHUMIDIFIER CONTROL

1. Click the dehumidifier name to enter the control interface, turn ON/OFF, adjust the setting humidity.



\*For App update, there maybe deviation of the actual items from what is on the manual without prior notice. We express our apologies.

-07-

## Wi-Fi應用程式使用說明

請掃描QR 碼以便下載最新版本應用程式



多謝選用我們的抽濕機。

此說明適用於備有Wi-Fi 功的抽濕機。

請仔細閱讀此使用說明，並妥善保管以備查閱

請勿自行移除Wi-Fi 模組。

因為技術更新，可能出現實物同使用說明出現差異。請參考實物。

### 安裝應用程式

完成下載應用程式，請安裝於您的智能手機上。

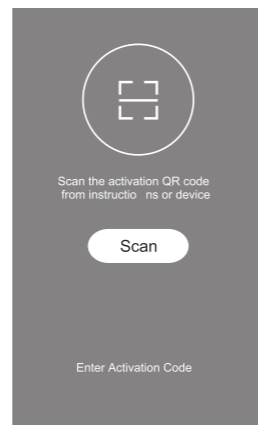
當完成安裝後，你可於手機找到“”標誌的應用程式。



-01-

### 啟動QR碼

- 當您首次使用應用程式時，介面會顯示啟動頁面而你需要掃描QR碼(按掃描鍵並掃描下頁的啟動QR碼或輸入啟動碼以完成啟動工作。



- 抽濕機啟動QR碼

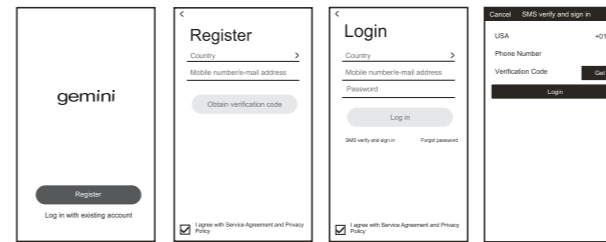


- 輸入啟動碼“gemini”

-02-

### 登入使用戶口

當您首次使用應用程式時，需一併註冊使用帳戶。按下註冊鍵進入註冊介面，你可以用電郵或手機號碼進行註冊。

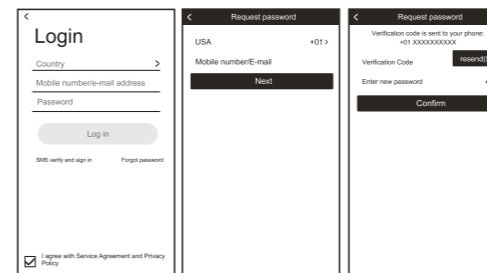


### 登入使用戶口

- 登入已註冊的戶口，請填入已註冊的電郵或手機號碼及密碼，然後按下登入鍵。
- 如以手機號碼登入，請按以“SMS短訊登入”以便進入下一頁，填寫電話號碼並“取得”鍵接受確認號碼，填入後，再按“登入”鍵。

### 忘記密碼

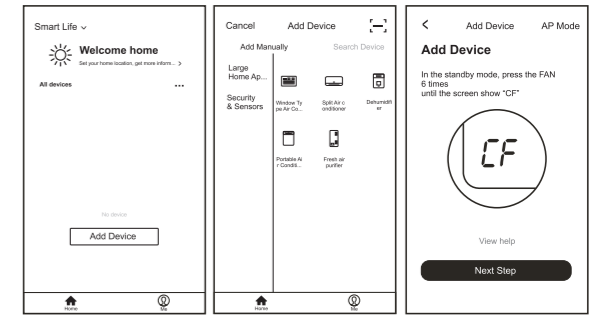
- 按下“忘記密碼”去下一頁。
- 填入登記手機號碼及電郵地址後，按“下一頁”去下一頁。
- 你會收到確認碼，填入後並填上新密碼後，按“確認”鍵。



-03-

### ADD THE DEVICE 增加裝置

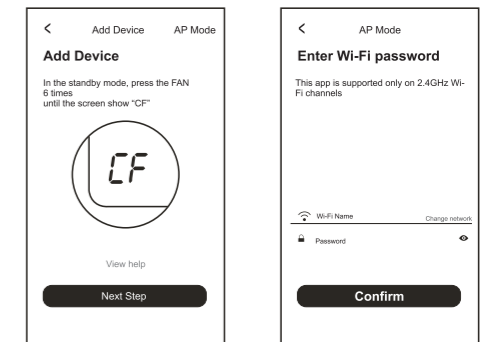
- 按下“增加裝置”鍵到下一頁，選擇產品類別。
- 這有兩種方法去進行裝置對接，“CF 或 AP模式”透過選擇兩個不同鍵執行。



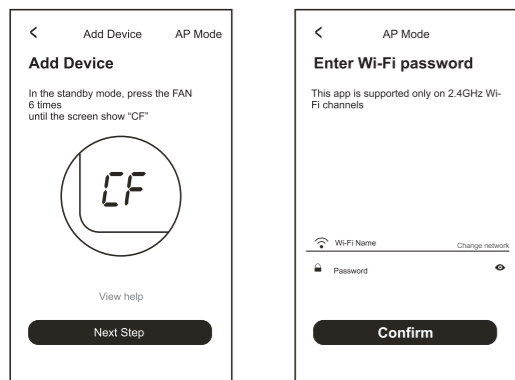
### 增加裝置 (CF模式)

- 系統設定以“CF”模式優先，按“下一步”去繼續。
- 選擇路由器，填入路由器密碼，按下“下一步”去繼續。
- 在待機模式下，在4秒內連續按下操控面板上的“定時”按鍵6次直至出現“CF或AP”。

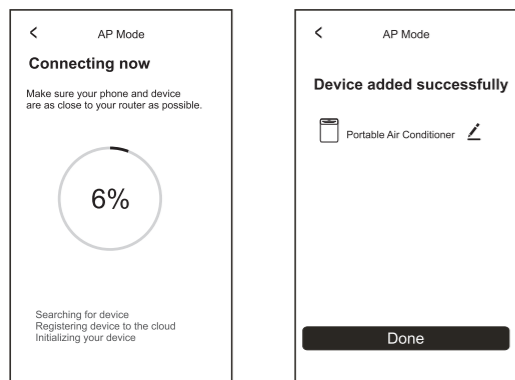
此為Wi-Fi重設，以進行“CF”和“AP”模式互換。



-04-



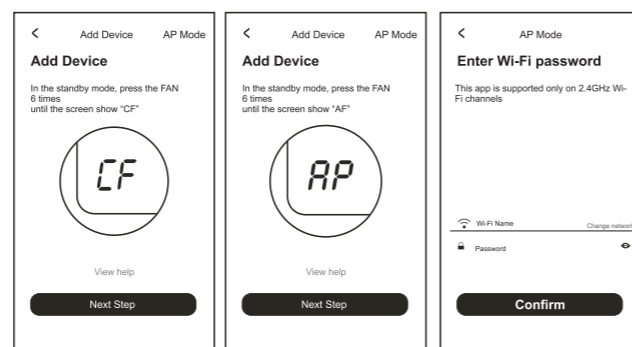
- 應用程式會進行自動掃描進行裝置對接。
- 當完成對接後，會出現以下畫面。
- 你可以“重新命名”裝置以便分享给其他使用者，或按“完成”以開始操作裝置。



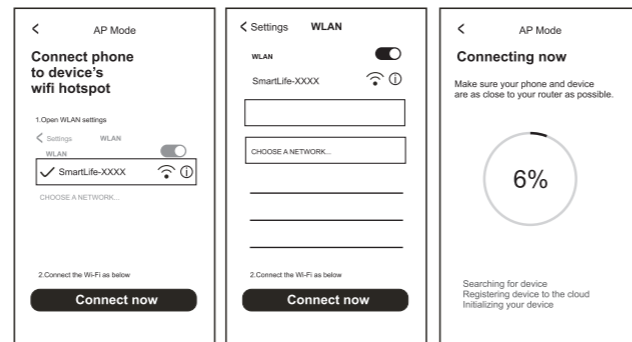
### 增加裝置 (AP模式)

- 按下“AP”模式進入“AP”頁面。然後按下“下一步”去繼續。
- 選擇路由器，填入路由器密碼，按下“下一步”去繼續。
- 在待機模式下，在4秒內連續按下操控面板上的“定時”按鍵6次直至出現“CF或AP”。此為Wi-Fi重設，以進行“CF”和“AP”模式互換。

-05-

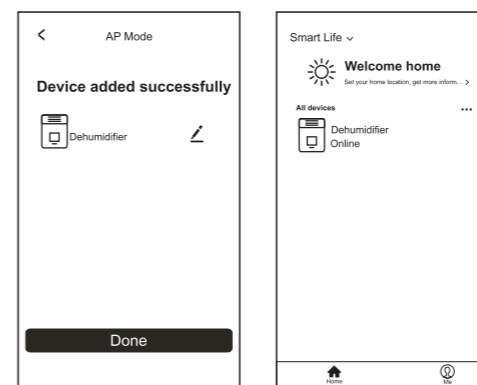


- 選擇在網絡設定上的裝置“Smart life-XXXX”，然後回到應用程式的介面。應用程式會進行自動對接。



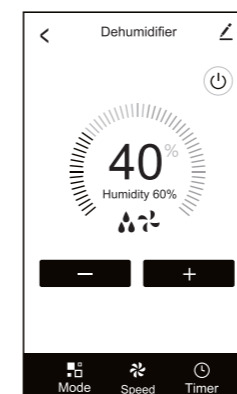
- 當完成對接後，會出現以下畫面。
- 對應失敗後，應用程式會作出提示然後請按“重試”再作出連接。

-06-



### 抽濕機控制

- 按下抽濕機裝置名稱進入操控介面，按下“開/關”然後調節溫度。



\*因為應用程式更新，可能出現實物同使用說明出現差異。請參考實物。

-07-