

gemini
ITALY

負離子UV殺菌燈連HEPA
過濾空氣淨化機

**IONIC UV HEPA FILTER
AIR PURIFIER**

MODEL NO.: 型號 : GAP12

Thank you for choosing our products. For your consumer rights and interests, please carefully read the warranty card and keep it properly. Items related to the product warranty are specified as follows:

1. This product is only applicable for household use only, which is prohibited for outdoor and commercial use.
2. Do not immerse the power cord and the whole product in the water or other liquid, so as to prevent electric shock from damaging the product.
3. If the product or other components are found to be damaged, please stop using.
4. This product is not for children under 8 years of age as toys, please follow the instructions carefully.
5. Adults should guide children not to play with this product.
6. Do not use the device under the environment of high temperature, high humidity, excessive dust, corrosive, flammable and combustible gas (such as kitchen and bathroom).
7. Do not use this product around heating equipment (such as oven, fan heater or other heating devices) or under direct sunshine.
8. Do not use the device while the temperature varies seriously before or when the product is on.
9. While working, the device should be placed on steady and dry horizontal surface without any incline.
10. While working, please ensure the inlet and outlet are 30cm far away from other objects.
11. If the product is technically updated, please be subject to the new instructions, no further notification will be published.

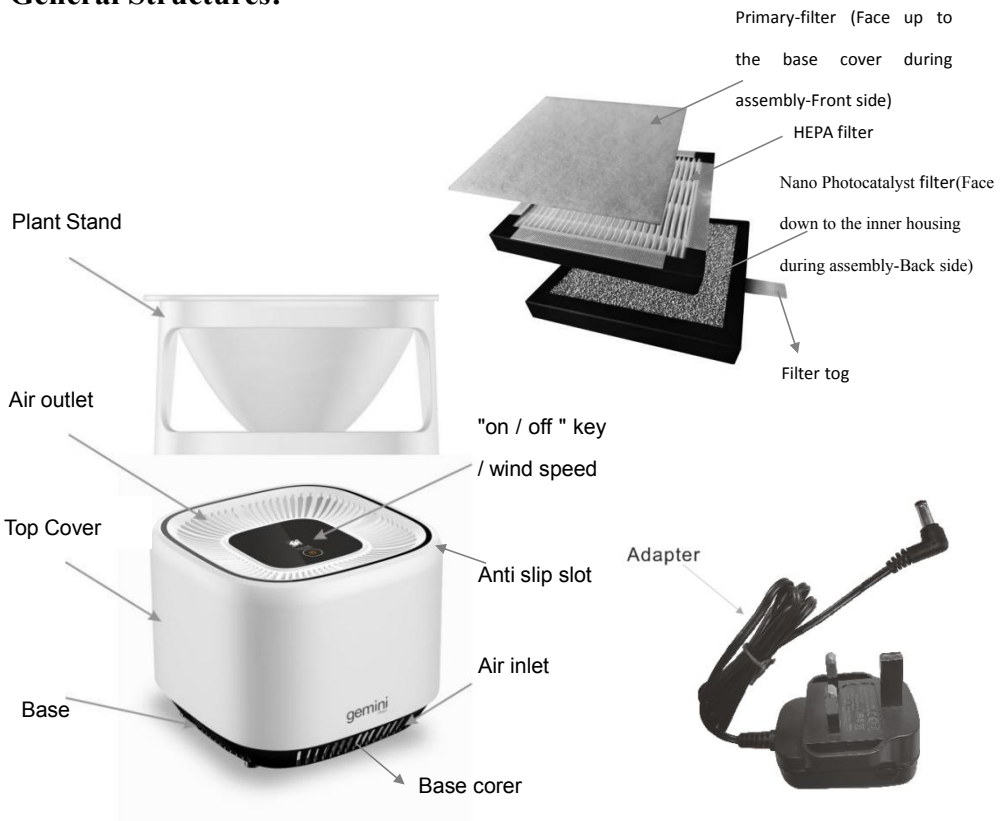
Product feature :

1.This product is researched and developed by professional design team on the basis of domestic environment and life style, which is suitable for indoor or office. It plays the function of

effectively on removing dust as 99.97% , formaldehyde removal, inhalable particulates , killing bacteria 99% and dispelling peculiar smell etc.

2.This product is small and its appearance is exquisite, suitable for air purification after decoration and daily living of children's bedroom, master room, elderly room, offices and etc, makes you and your family every day enjoy pure and natural air quality.

General Structures:



Preparations before use

1. Please carefully read the user manual and preserve it for future reference
2. Please remove the package, protection film on the product and plastic bag of the filter before usage
3. Tips: please refer to following chapter for the method of disassembling the filters.
4. Please place the device on steady and dry horizontal surface and ensure 30cm far away from other objects. Before plug into the power, please make sure the socket and power wire satisfy the requirement of this product's rating label.
5. Please make sure the power is shut down and the plug is pulled out before cleaning the product.

Filtration system

- 1.Layer one / primary filter remove the large particle or hair from the air.
- 2.Layer two: HEPA 13 filter is the second layer of purification system. It effectively filters as high as 99.97% to remove most of dust and dust mites (0.3 microns).
- 3.Layer three: Nano Photocatalyst filter is third layer of purification system and general term of semiconductor material, under light condition will be restored in the sun light effect which can purify the air, formaldehyde removal and keep the air fresh & dispelling peculiar smell.
- 4.Layer four: (Build in) UV lamp sterilization. Efficiently kill 99% of bacteria for disinfection
- 5.Layer five : (Build in) Negative ions generator, remove indoor static electricity for sterilization and keep the air fresh.

How to use the product:

1. Turn on the product : after connecting to the power supply, press the "on / off /wind speed key" on the control panel to start operation, and the machine runs in "Low wind speed mode" by default and its indicator light on.



2. Select the wind speed : Follow to Step 1 to turn on the product, press the "on/off / wind speed" key again to switch to "high-wind speed mode operation. If you continue to press the "on/off /wind speed" key again , the product will turn it off and its indicator goes off.

3. Filter replacement reminder signal: machine runs 1500 hours in total, the "on / off/ wind speed " key indicator will keep flicker as alarm signal (Di Di sound will keep ringing), prompting users to replace the filter. After replacing the filter, press and hold the "on / off / wind speed" key for 5 seconds to reset, and the machine enters recounting cycle of the new filter replacement timing cycle.



How to Use Plant stand :

First, align the four base edges of the plant stand are inserted into the top anti-slip slots of the machine, and must be placed on a smooth and dry horizontal and not inclined surface .

A. Aquatic small fish: First put the plant stand firmly at the top of anti-slip slots of the machine, add the fresh water not more than 250 ml (not more than 3/5 portion ratio of the inner stand) , excessive loading may lead to water overflow into the machine and cause the machine not working. and slowly put the small fish into the plant stand.

B. When used it for a cultivation plant , if you use soil, only fill up the soil not more

than 3/5 portion ratio of the inner stand. plant planting steps: first put the empty plant stand in a flat surface , transplant the plant into the plant stand, fill in the soil (not more than 3/5 portion ratio of the inner stand and then reinstall the plant stand to the top anti-slip slots of the machine or using plastic green planting inside the plant stand as decoration purpose .

Fragrant Air function

Please make sure the power is disconnected, remove the base cover and add few drops of essential oil in the cotton. Install the base cover and start the operation, bring the fragrant air in the indoor environment

Procedures to remove/change the filter:

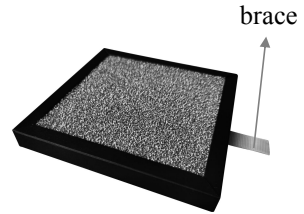


You can add essential oil into the cotton at the inner slot of base cover.



Remove the filter set

Please make sure the power is cut off before replacing new filter. Pull and hold the brace on the sides of the filter set , then pull it slightly to remove it from the unit.



Assemble the filter set

Please make sure the power is cut off before replacing new filter.

Please make sure the Nano Photocatalyst filter is placed downward to the inner housing slot and the white primary filter face to the base cover during assembly.

Align the filter to the slot, the side with braces outward, then push the filter set flat to the inner housing into the unit slightly .

The lifetime of the filter differs based on indoor environment, usage times and usage location.

Product maintenance

White primary filter layer can often be torn off the magic paste for washing (or wiping), and then expose it under the sun; for drying, paste back the filter to original position .

It is suggested to clean the primary filter in every half month to clear away the large pollutant, like hairs . as the above way. Also is suggested to change HEPA filter set after 1500 hours operation or using 6 months in total . Please contact Our after sales center for filter purchase .

Warning: do not flush by water or soak the HEPA and Nano Photocatalyst filter to be

used on this product.

Common failure	Possible cause	Troubleshooting
The unit is not working	The power cord is not plugged or power has no electricity	Plug in the power supply; ensure the power supply is working.
	Power switch is not on.	Press “on/off” button.
The purification effect is poor	End of service life.	Change a filter.
	Air inlet/outlet is blocked	Clean foreign parts of air inlet/outlet
	Wrong installation of front and back side of filter	Install filter in the right way
The air volume is weak	The filter is too dirty	Change a filter
	Please make sure all the package is removed.	
Abnormal noise exists	Please make sure all the package is removed and check any damage on the appearance.	
	Please make sure the air inlet and outlet are not blocked by other objects, and clean it if any	
	While turning on the negative ion built-in function, “fizz” sound is normal.	

If above corrective actions are not able to solve the problem, please contact sales and after-sales service center assigned by our company. For safety, please do not disassemble the unit and maintain by yourself to avoid damage.

1. Please do not plug or unplug the power with wet hands to avoid electric shock. Please unplug the power while moving the purifier.

2. The air purifier is not designed for filtering lampblack, it is prohibited to use the device in

the area such as kitchen.

- 3.High-pressure negative ion module is contained inside of the device, please do not disassemble or repair it if you are not an authorized technician. If needed, please contact our after-sale service center for repair check .
- 4.Please do not cover the air inlet and outlet, prevent the purification effect from being affected.
- 5.It is prohibited to touch air inlet parts and insert any foreign matter in air outlet, to avoid equipment malfunction.
- 6.In case any damage on the appearance or interior, or any abnormal noise, peculiar smog smell, , please cut off the power in a safe way, and contact the seller promptly. Please do not disassemble the product.
- 7.If it is damage occurred of the power cord, please contact the seller to change or allocate new parts. Please do not change the power cord or adapter by your own.
8. This product can not trends as a vacuum cleaner or ventilation equipment.
9. While replacing the filter or cleaning the product, please remove the adapter from the power supply .

The following conditions are not in the scope of free repair service:

- 1.Damage by man-made causes (such as drop, crash, misplacement in the corrosive environment etc.)
- 2.Damage by irresistible reasons (such as earthquake, fire, flood and some other natural disasters)
- 3.Damage caused by maintenance technician who are not assigned by :Gilman
- 4.Damage caused by violation of operating requirements noted in user manual;
- 5.Out of warranty or exchange period;

6.Unable to provide product purchasing invoice or revise the invoice personally.

Technical parameters:

Model No.: GAP12

Rated voltage: DC12V

Frequency : 50Hz

power rating: 5W

Applicable space : $\cong 10\text{m}^2$

Applicable temperature : $-10\sim 50^{\circ}\text{C}$

Negative ion concentration : $> 6 \times 10^6 \text{pcs/cm}^3$

Product size : 155W*190H*155D mm (with plant stand)

155W*130H*155D mm(without plant stand)

安全注意事項：

感謝您選購本公司產品，為了您的消費權益，請仔細閱讀保修卡並妥善保存，有關產品保修事項具體規定如下：

1. 本產品只適合在家庭和室內環境下使用，嚴禁戶外及商業使用
2. 請不要將電源線及整個產品等浸入水裏或其他的液體裏面，防止損壞產品而觸電。
3. 發現本產品或其他部件損壞時，請停止使用。
4. 本產品非供 8 歲以下兒童做為玩具使用，請遵循說明謹慎使用。
5. 成人應該指導小孩不可把玩此產品。
6. 嚴禁在高溫、高潮濕、高粉塵和有腐蝕性氣體及易燃易爆氣體等環境下使用（如廚房，浴室等）。
7. 嚴禁在加熱裝置周圍（如烤箱，暖風機，各種加熱器具等）及陽光照射下使用。
8. 請勿在溫差變化大的環境下使用，室內使用時不得提前或同時使用另類的香薰及各種噴霧。
9. 使用本產品時，應將產品置於平穩及乾燥的水平面上，不可傾斜。
10. 使用本產品時，需確認產品周圍，進風口以及出風口距離障礙物至少 30 釐米。
11. 但因適用環境的不同，可能會有一些變化，敬請知悉。如產品進行技術更新，將以新版說明為準，恕不另行通知。

產品特點：

1. 本產品由專業設計團隊根據生活環境和生活方式進行研究開發，適用於室內或辦公室。它的作用是有效去除灰塵達 99.97%，除甲醛，可聞顆粒物，殺滅細菌 99%，除異味等功能。
2. 本產品小巧，外觀精美，適用於兒童臥室、主房、老人房、辦公室等日常生活的

空氣淨化，使您和您的家人每天都享受純正、自然的空氣品質。

使用前的準備

仔細閱讀使用說明書並保存以備日後查詢

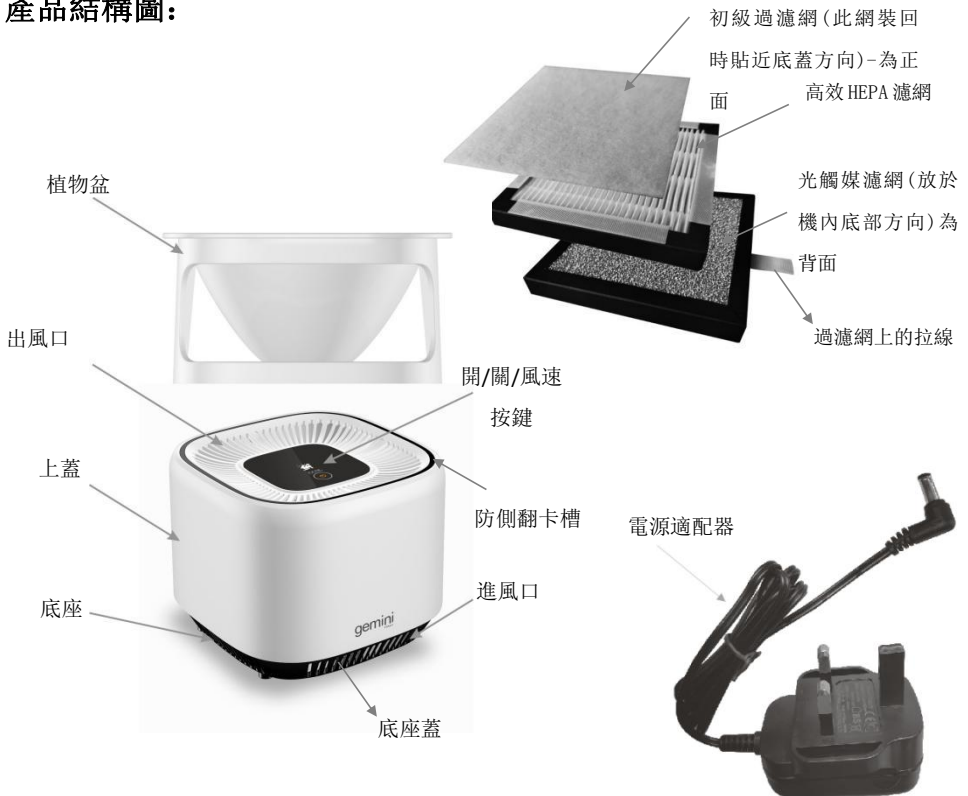
使用前請清除產品表面包裝及保護膜, 清除濾網的塑膠包裝袋

提示：拆卸過濾網的方法參照下一節：過濾網拆卸方法。

將產品放置於乾燥、穩固及平整的水平面上，並確保產品周圍障礙物的距離達到 30 釐米。插入電源插頭前要確認電源插座以及電源線符合本產品要求。

務必確認在拆除/更換過濾網件之前，必須將將電源關閉，並撥出電源插頭。

產品結構圖：



產品使用方法：

1. 開機：連通電源後，按“開/關/風速一下”鍵即可開機，開機後機器默認以“低風速模式”運行；
2. 選擇風速：按照第 1 步開機後，再按“開/關/風速”鍵，即切換到“高風速模式”運行，若繼續按“開/關/風速”鍵則關機，如此迴圈；



3. 濾網更換提醒：機器每累計工作達到 1500 小時後，“開/關/風速”鍵指示燈將閃爍及一直滴滴提示聲，提示用戶更換濾網或連續使用多於 6 個月需清潔或更換。更換濾網後，長按“開/關/風速”鍵 5 秒鐘即可復位繼續工作，機器會自動進入下一個濾網更換計時週期。

如何使用配帶的植物盆,需注意以下事項:

先把植物盆的底部四個邊插進機器頂部的防側翻卡槽，一定要置於平穩及乾燥的水平面上，不可傾斜。



- A、放小魚：先把植物盆牢固地放在機器的頂部四邊防側翻的卡槽內，然後裝清水量不應超過 250 毫升（即水位不能超過 3/5 盆內高度），過量水注入盆內可能導致水溢出，流入機器頂部的出風口，導致機器損壞。最後將小魚慢慢放入植物盆中，避免濺水出機頂出風位置。
- B、作為花盆使用時，如果使用土壤，則只填充土壤最多不能超過 3/5 盆內高度。
種植物步驟：先把植物放在平面的地方放好，把植物移植到花盆內，填上泥土（不能超過 3/5 盆內高度）再把種植好的花盆重新安裝卡在本機頂部四邊防側翻的卡

槽內 或可放置植塑膠綠植物作裝飾之用。

加香熏油功能

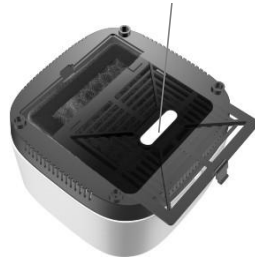
在添加香熏油之前，請務必切斷本機電源。

打開底座蓋，在香薰棉中心加幾滴香水或香薰油。開機後，會慢慢散發有清香的空氣

拆卸/更換過濾網的步驟：



你可以在底蓋背面的香薰棉中加入精油。



拆卸濾網

拆除/更換過濾網件之前，必須將電源關閉，並撥出電源插頭後才可以進行更換過濾網。

用手同時拉住濾網一側的拉條，往外輕輕用力一拉即可

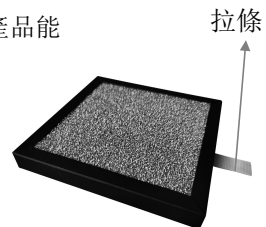
裝配濾網

將濾網對準機器的濾網槽位，有拉條的一面朝外，輕輕推入及向下壓到位即可。過濾網壽命因室內環境、使用次數以及使用位置而不同。為提高產品能

效，請選用本公司推薦的過濾網。清潔及更換過濾網

前請確認切斷電源，初級過濾網每半個月用軟毛刷清

理上面的毛髮等粗大的污染物。



警告：切勿用水沖洗或浸泡本產品之 HEPA 及光觸媒濾網

過濾系統功能效果

1. 第一層：初級過濾網過濾大顆粒粉塵及毛髮等
2. 第二層：高效 HEPA13 濾網：是本機過濾系統的第二道濾網，有效過濾大部分的塵及塵蟎(0.3 微米)，過濾率高達 99.97%
3. 第三層：光觸媒濾網是本機過濾系統的第三道濾網，在紫外光及陽光照射條件下具有除臭，抗菌的功能，淨化空氣，除甲醛，保持空氣清新。
4. 第四層：(內置式)紫外線殺菌可以有效的殺滅各類細菌達 99%，帶有消毒的作用
5. 第五層：(內置式)負離子產生器能消除室內靜電，使空氣清新

產品保養及維護：

本機過濾網易於清潔和更換，每半個月，可經常把白色的初濾層從魔術貼上撕下來進行清潔（或擦拭），然後把它完全曬乾；曬乾幹後再貼回原位。

用以上方式清潔濾網後反復使用，超過 6 個月後使用建議更換濾網。

常見故障	可能原因	排除方法
機器不運行	電源線未插電或電源沒電	插上電源，確保電源正常
	沒有按下機器上的電源開關	按“on/off”電源開關鍵
淨化效果差	濾網使用壽命已到	清洗白色初濾層或更換濾網
	進、出口被異物受阻	清理進出口異物
	濾網正及背面安裝錯誤	正確安裝濾網
出風量小	濾網太髒	更換過濾網
	請確認完全移除所有包裝材料	
有異響	請確認完全移除所有包裝材料, 並檢查外觀有無破損	
	請確認進出口沒有障礙物或堵塞情況，並清理	

內置的負離子產生器，會有正常的輕微嘶嘶聲

如以上方法仍無法解決故障，請聯繫本司指定的售後服務機構，請勿自行拆開機器維修，以免造成安全問題。

1. 請勿用濕手插拔電源插頭，以免發生觸電危險！在移動淨化器時請拔掉電源插頭！
2. 禁止在浴室等潮濕的區域使用，以防觸電及加速電路系統老化。
3. 請勿在廚房有油煙的環境使用，本機並非針對過濾油煙而設計。
4. 本機內部含高壓負離子模組，非專業人士請勿自行拆卸或者維修，如有需要請聯繫本公司指定維修網點或寄回本公司售後部門處理。

請勿遮擋本機進、出風口，以免影響淨化效果。

5. 嚴禁用手觸摸風口，嚴禁向出風口插入異物，以免造成極其故障。
6. 如本機外觀或內部出現損壞以及出現異響、異味、煙霧等情況時，請立即以安全方式切斷電源，並及時聯繫銷售商，嚴禁擅自拆卸產品。
7. 如本產品的電源線出現破損等情況，請聯繫銷售商更換或配置，嚴禁擅自更換電源線或配置轉接插頭，如長期停用本產品請拔出插頭切斷電源。
8. 本產品不能祛除一氧化碳、氬等有害氣體，因此在發生燃燒或化學災害時
9. 更換濾網或清潔本機內部時請通過控制面板上的開關按鍵關閉電源，並拔出電源插頭。

下列情形不在保修範圍內

1. 由於人為原因（如跌落、碰撞、放置於易腐蝕環境等）造成的損壞；
2. 不可抗拒原因（如地震、火災、水災及其它自然災害）造成的損壞；
3. 非公司指定的專業維修人員擅自自行拆修本機造成的損壞
4. 違反本機使用說明書所規定的使用要求而造成的損壞；
5. 超出保修期、更換期；
6. 無法提供產品購買發票或私自塗改發票。

技術參數:

產品型號: GAP12

額定電壓: DC12V

額定頻率: 50Hz

額定功率: 5W

適用空間: $\leq 10\text{m}^2$

適用溫度: $-10\sim 50^\circ\text{C}$

子濃度: $> 6 \times 10^6 \text{ pcs/cm}^3$

產品尺寸 : 155 闊*190 高*155 深毫米 (配花座)

155 闊*130 高*155 深毫米 (不配花座)

請記錄下列產品資料

• 型號

• 機身編號

• 經銷商名稱

• 購買日期

本產品不斷改進中，如功能有所更改，恕不另行通知，如有疑問，請與客戶服務中心聯絡，不便之處，敬請原諒。

說明書內容以英文版本為準

ToolBox Customer Service Centre 客戶服務中心：

4/F, DCH Building, 20 Kai Cheung Road, Kowloon Bay, Hong Kong
香港九龍灣啓祥道20號大昌行集團大廈4樓

Customer Service Hotline 客戶服務熱線：(852) 8210 8210

Service E-mail 電郵地址：8210service@gilman-group.com

Please register now at 請即上網登記：www.toolbox.hk

Website 網址：www.gilman-group.com

Proudly Serviced by:



a Gilman Group Company

太平家庭電器